



1416 Midtown, Manhattan

2ND FLOOR - VIEW FULL DETAILS BELOW

LOCATION

New York, NY 10018

TAGS

Bedroom, City View, Deck, Elevator, Empty, Fire Escape, Kitchen, Living Room, Modern Contemporary, Rooftop, Terrace Patio, White Brick Wall, White Spaces, Wood Floor

SPECS

2,200 sq ft - 2nd Floor
2,000 sq ft - 3rd Floor
2,000 sq ft - 4th Floor
11-ft ceiling height

CATEGORIES

* In the Zone, Apartment, Event Space, Loft, Roof Top, Studio

Notes

Film friendly studio

This location has three floors each with loft studio. 2nd floor is 2200 sq ft loft, 3rd floor is a 2000 sq ft loft with dark floors.

South light from morning till dusk, 11-ft ceilings, a large equipment rental list (or bring your own)

Rooftop with great views of the city

10ft x 10 ft freight elevator that opens directly into loft, full kitchen with large island for food prep/catering, bathroom/shower, commercial grade electric

Restrictions:

Loft on 3rd and 4th floor require separate clearance/fees

All floors must be protected, booties must be worn over shoes

Areas of use determined in advance, etc

Rooftop requires separate clearance & fees for roof

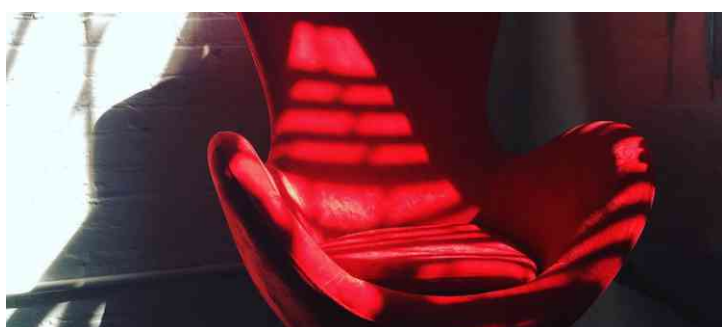
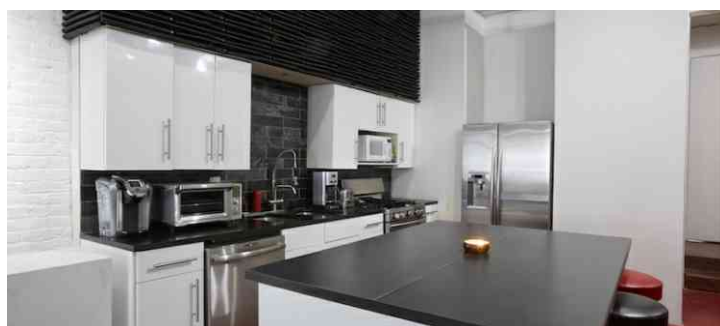
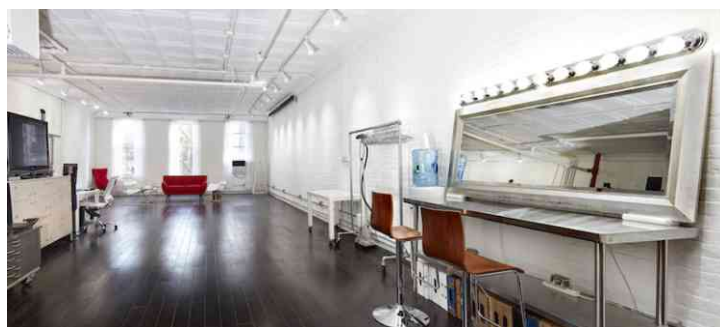




3RD FLOOR

Notes

LOFT 3 is an elegant 2000 Square ft. full floor open loft designed for Film and Photography. Built in 1910, it was originally a carriage house for horses. The black wood floors, mixed with the original tin ceiling tiles and exposed brick walls give it a unique look and feel. The Loft has built in white, black, and gray 12' seamless to use in your production if needed. A 27" iMac with Capture One 11.x hooked up to a 65" LED TV as second monitor is also included in the rental. There is a 10'x20' freight elevator that opens up directly into the loft.







FIRE ESCAPE





ROOF TOP - VIEW DETAILS BELOW

Notes

ROOFTOP

separate clearance & fees for roof required (7th floor)

