

<div><div></div><div>LOCATION</div></div> <div>New York, NY 10018</div>	<div><div></div><div>SPECS</div></div> <div>4,500 sq ft - PH 2,500 sq ft - Rooftop</div>
<div><div></div><div>TAGS</div></div> <div>Bathroom, Bedroom, City View, Clawfoot Tub, Elevator, Exposed Beam, Exposed Brick, Kitchen, Laundry Room, Living Room, Modern Contemporary, Rooftop, Skylight, Terrace Patio, Traditional, Water Tower View, White Spaces, Wood Floor</div>	<div><div></div><div>POWER</div></div> <div>200 amp 3 phase electric tie-in</div> <div><div></div><div>CATEGORIES</div></div> <div>* In the Zone, Apartment, Event Space, Loft, Roof Top Studio</div>

Notes

Film friendly / Event Friendly

4,500 square foot penthouse (12th floor) open loft, fully furnished, with 24 windows, 4 skylights, white wood floors, and country kitchen. Windows face South, West and North.

Some of the furniture changes periodically; always best to scout.

Amazing 2,500 square foot rooftop, with view of Empire State Building, is directly accessible via 2 elevators. There are other floors available in same building- see 1142 (11th floor) and 1337 (10th floor).

**Restrictions:**

Additional fee for use of rooftop.

Additional fees apply for electric tie-in.

Additional fees if need to remove all furniture.

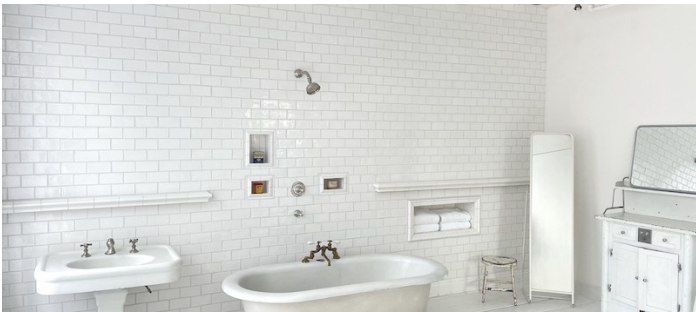
Freight elevator fees apply before 8am and after 6pm. 4 hour minimum required for Saturday and Sunday.

Location has preferred vendor for grip, lighting and production supplies. Additional fee applies if bring in outside vendor's rental equipment.



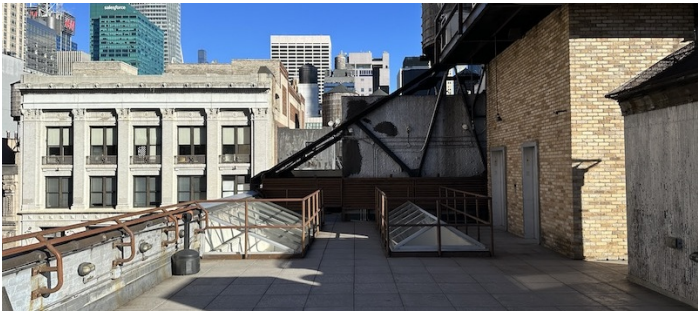
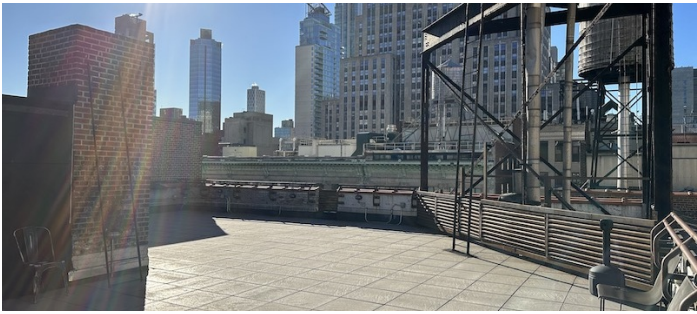
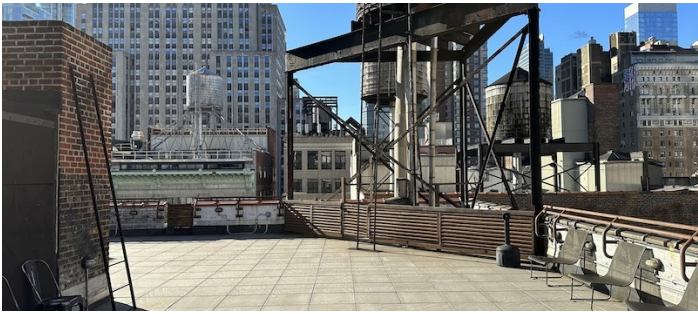
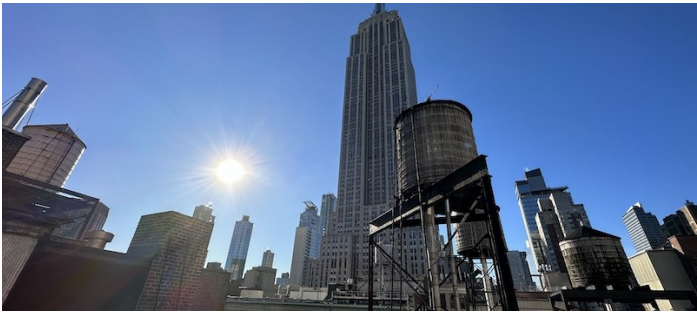
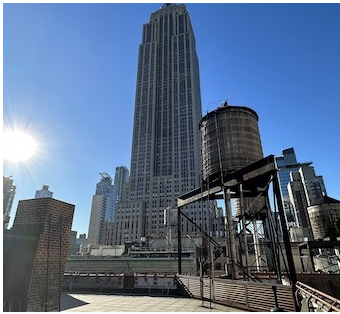
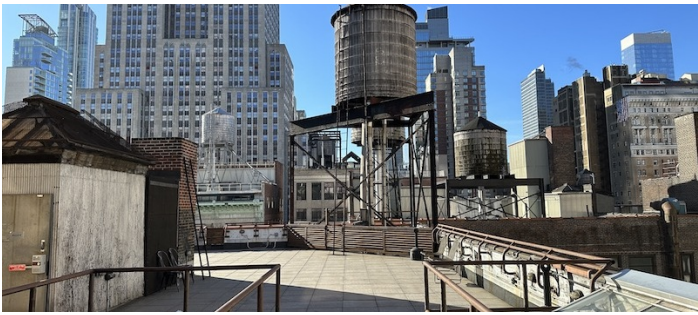




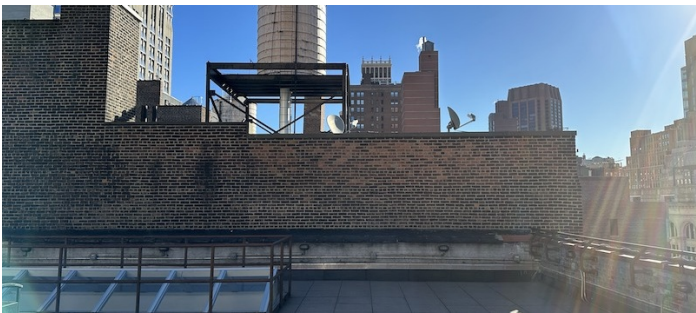
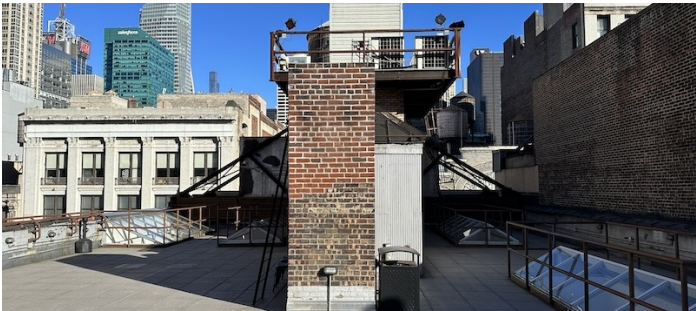
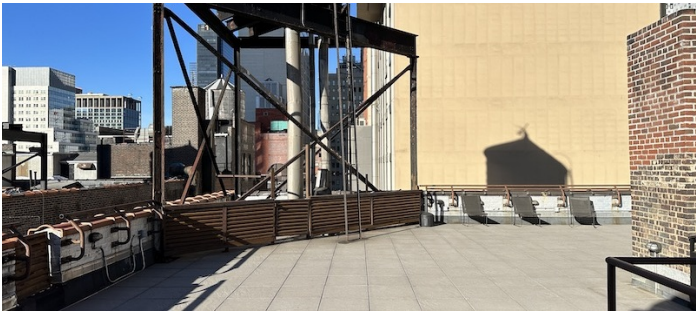
















ROOFTOP - NIGHT

