


1ST FLOOR PARLOR LEVEL - VIEW FULL DETAILS BELOW

 LOCATION

Brooklyn, NY 11201

 SPECS


900 sq ft per floor

 GETTING THERE

2,3,4,5 to Borough Hall

 CATEGORIES

* In the Zone, Apartment, Loft, Townhouse

 TAGS

Bathroom, Bedroom, Fireplace, Garden, Kitchen, Laundry Room, Library Room, Living Room, Modern Contemporary, Porch, Scandinavian, Skylight, Staircase, Staircase Ext, Stoop, Terrace Patio, White Spaces, Wood Floor

Notes

Film friendly

This beautiful brick facade townhouse that has been modernized. 5 floors, some rooms get redecorated, scouting always recommended. Some of the rugs have changed and the garden now has gravel

1st Floor/Parlor - a living room (approx. 520 sq.ft.), front entry (approx. 320 sq. ft)

2nd Floor - office (approx 460 sq ft)

3rd Floor - master bedroom with the blue bed (approx 300 sq. ft), the screened porch (approx 160 sq. ft), the closet/dressing area and the master bath (approx. 120 sq. ft)

4th Floor - Bedroom one large room (approx. 850 sq ft.)

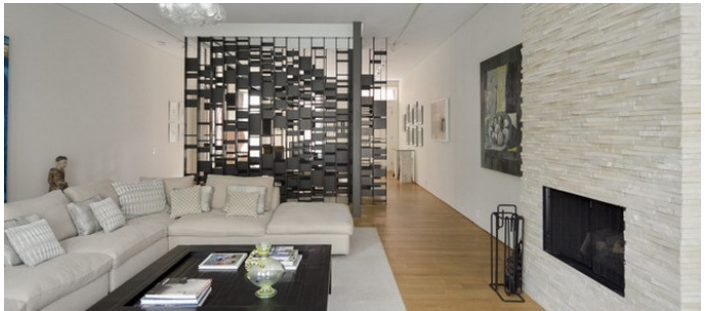
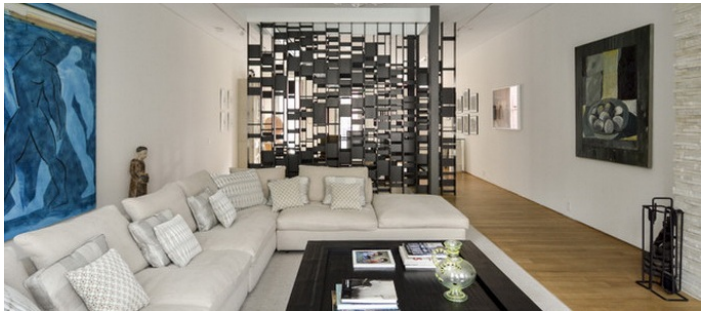
Garden Level - The TV room, with the blue and green furniture (approx. 320 sq. ft) and the kitchen/dining room (approx. 560 sq ft)

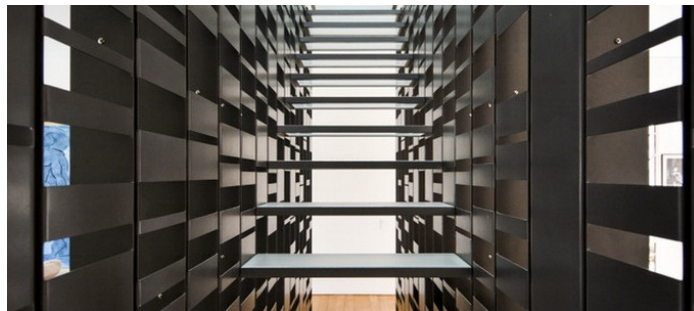
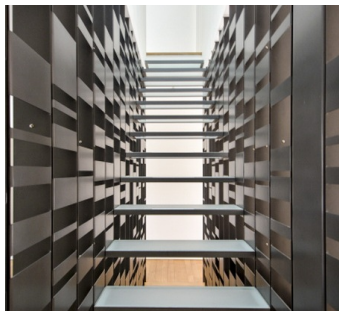
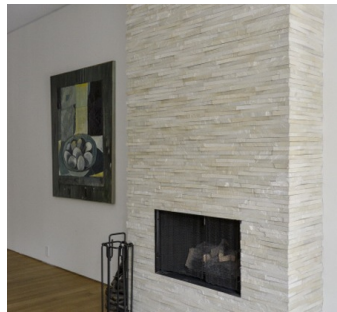
Stoop, brick exterior, built-in bookshelves, terrace, track lighting, kitchen island

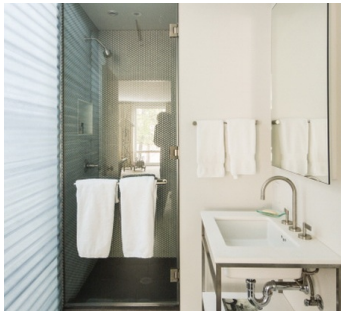
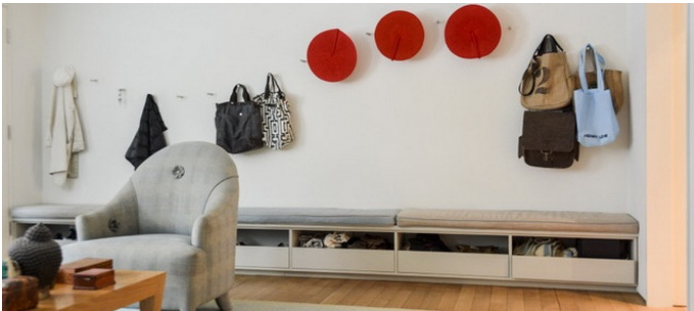
Restrictions:

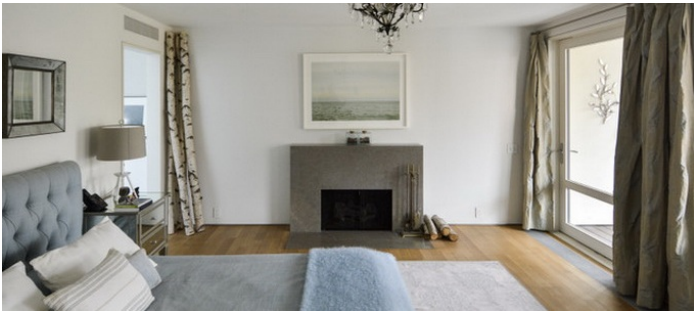
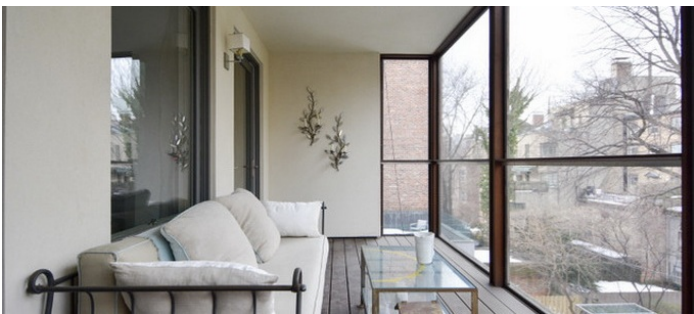
All floors must be protected, booties must be worn over shoes

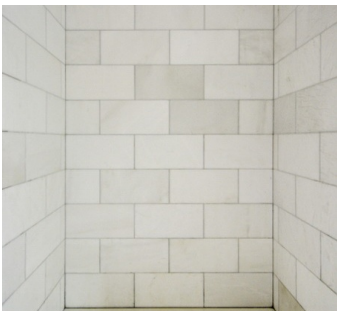
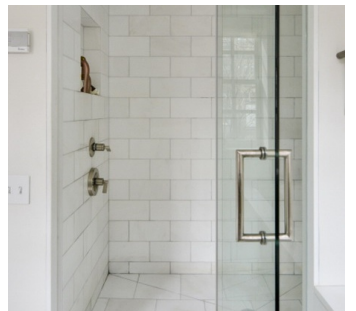
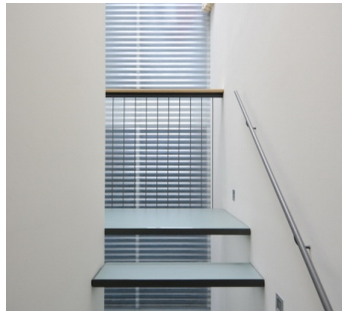
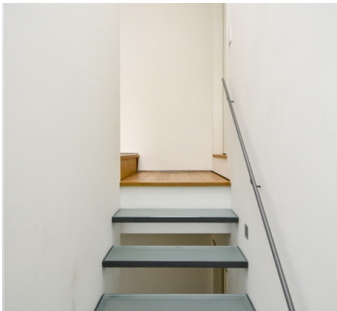
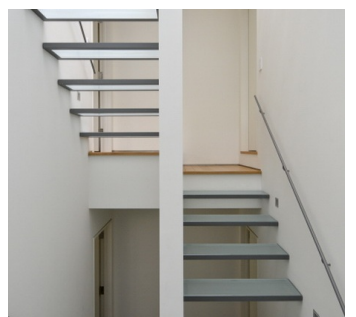
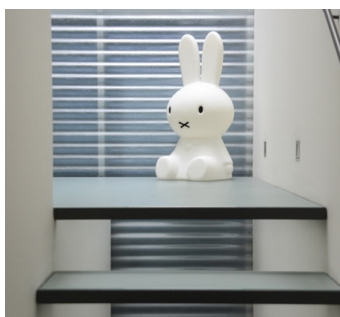
Areas of use determined in advance



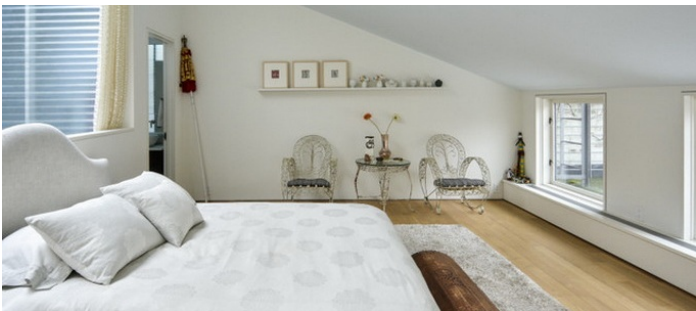


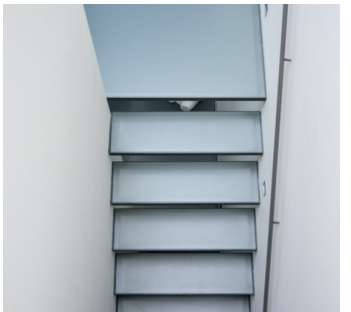




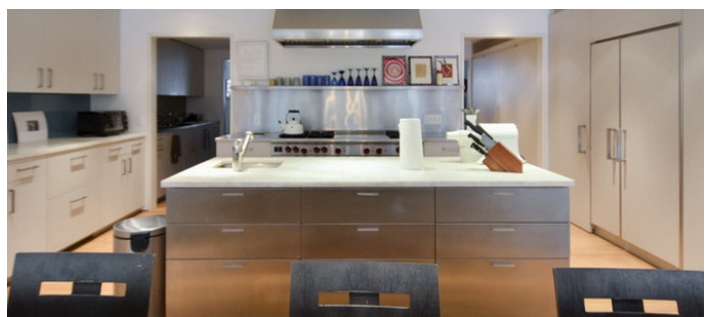








GARDEN LEVEL





GARDEN TERRACE

 SPECS

