



2372 Fulton Seaport, Manhattan

7TH FLOOR PENTHOUSE - VIEW FULL DETAILS BELOW

LOCATION

New York, NY 10038

TAGS

Balcony, Basketball, Bathroom, Bedroom, City View, Colorful, Elevator, Empty, Exposed Brick, Fireplace, Floor to Ceiling Windows, Kitchen, Living Room, Modern Contemporary, Piano, Rooftop, Staircase, Terrace Patio, Water View, White Spaces, Wood Floor

CATEGORIES

* In the Zone, Apartment, Event Space, Loft, Roof Top, Townhouse

Notes

Very film friendly, restrictions do apply

Penthouse (call it 7th floor) is 500 square ft, glass enclosed room with a 10 ft by 25 ft outdoor terraces on the east and a much large terrace with a grass area and Jacuzzi on the west side

The east terrace has wonderful views of the East River and the Brooklyn Bridge. The west terrace has views through the glass penthouse to the Brooklyn Bridge and the river and has a spectacular view of the NY City Municipal Building.

The 6th floor is 25 ft by 65 ft has the living room / kitchen and family room spaces : large rooms that flow one to another, a floor to ceiling stone fireplace, a dramatic staircase, large lots of light, oak floors and simple furnishings and no drapes.

Also have a 4th floor that could be used for longer filming if someone needed a two bedroom apartment (more photos coming soon), additional fees and must be requested in advance

5th floor is the family's floor and special clearance required for this space and additional fees - must be requested in advance

Restrictions:

Floors must be protected

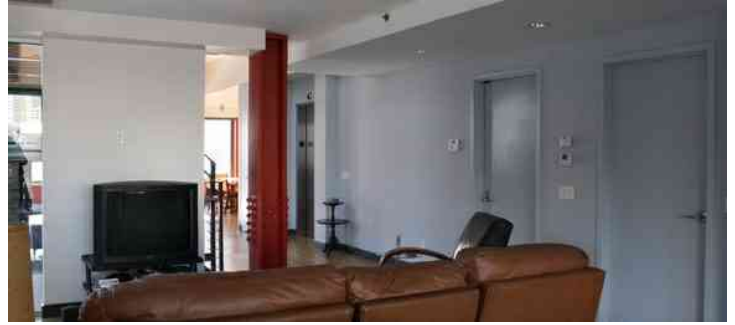
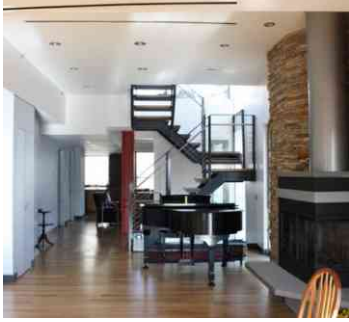






6TH FLOOR



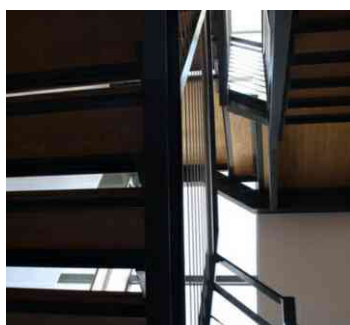
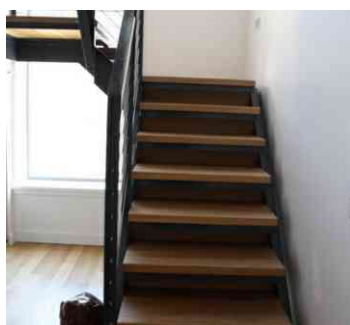
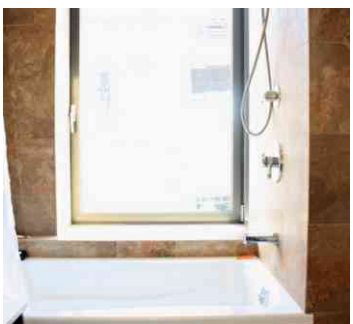
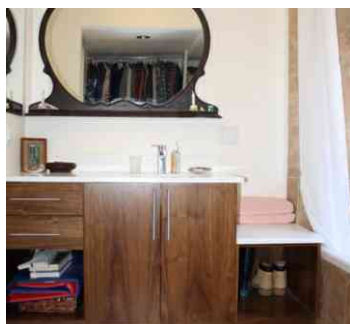
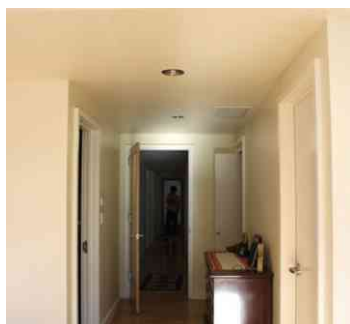
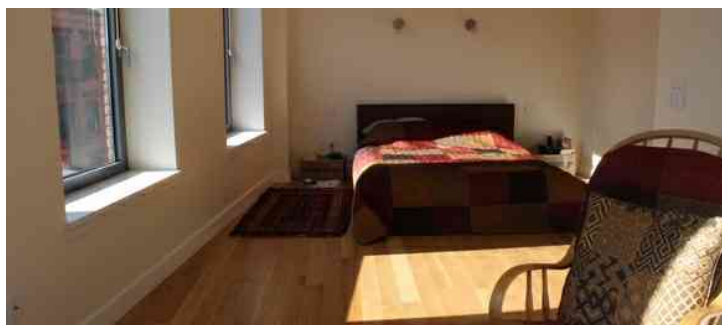
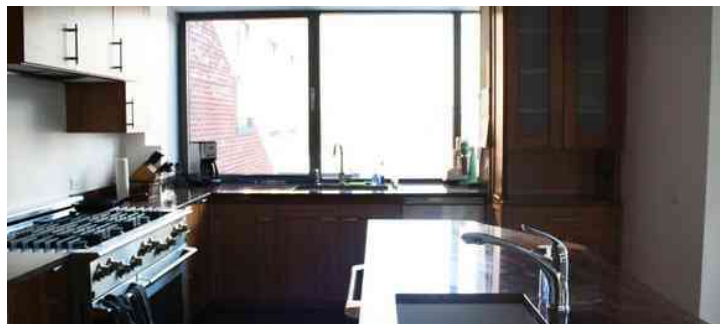




5TH FLOOR - VIEW DETAILS BELOW

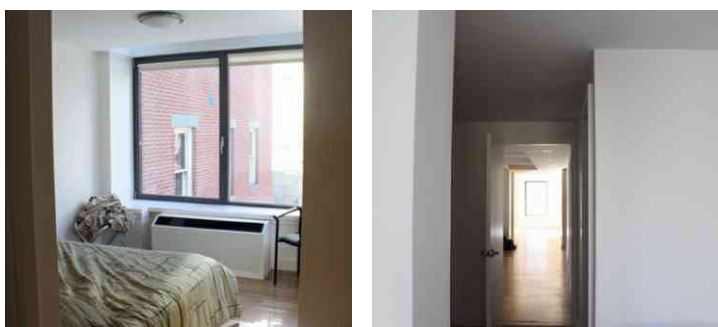
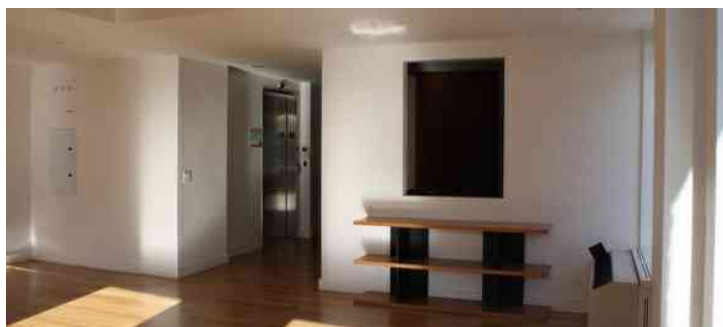
Notes

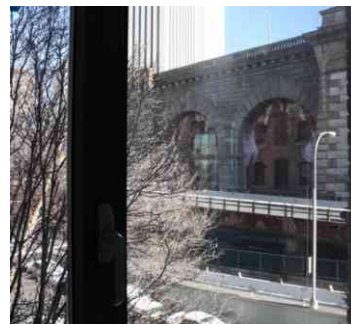
5th floor is the family's floor and special clearance required for this space and additional fees





4TH FLOOR - EMPTY BUT AVAIL TO RENT



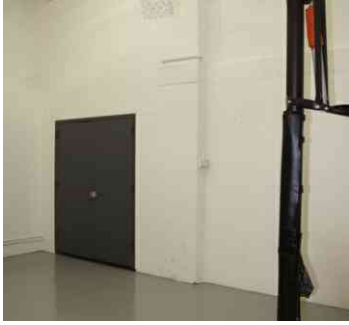




BASEMENT BASKETBALL - VIEW DETAILS BELOW

Notes

Different fees per area used, must request in advance





EXTERIORS

