



 LOCATION


Brooklyn, NY 11238

 TAGS

Architectural, Bathroom, Bedroom, City View, Distressed Patina, Exposed Beam, Exposed Brick, Garage, Kids Room, Kitchen, Living Room, Modern Contemporary, Raw Industrial, Rooftop, Skylight, Staircase, White Brick Wall, White Spaces, Wood Floor

 SPECS

1,900 sq ft total  
450 sq ft living room  
220 sq ft kitchen  
190 sq ft bedroom  
190 sq ft garage

 CATEGORIES

\* In the Zone, Apartment, Duplex, Loft, Roof Top, Townhouse

Notes

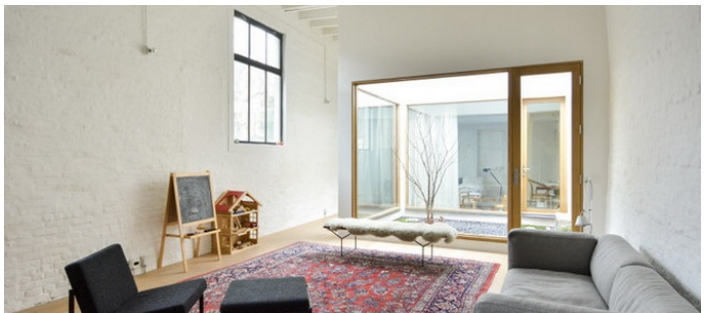
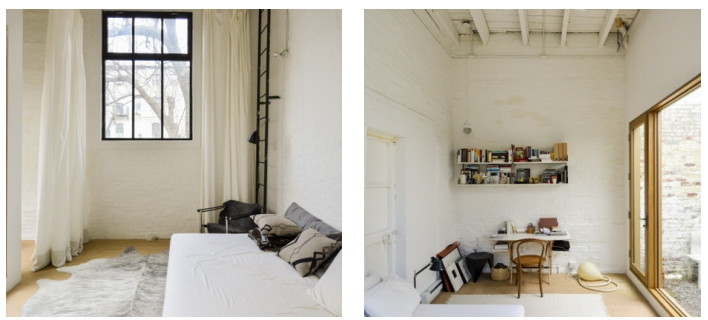
Film possible

Beautiful transformation of industrial space garage into a light filled 2 story house with 9 rooms, stairs in oak plywood with metal railings, 2nd floor houses master bath and 2 bedrooms, beamed ceiling painted white, white brick walls, great large windows with light, skylight, high ceilings, garden is an extension of the living room, guest room easily closed off by a curtain

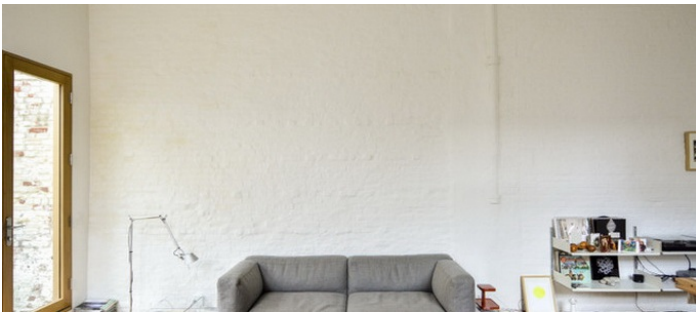
Restrictions:

All floors must be protected, booties must be worn over shoes

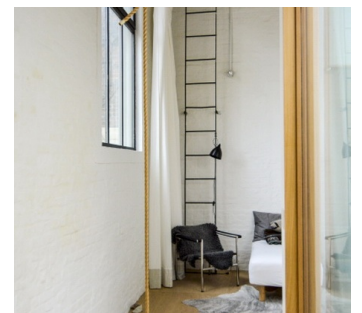
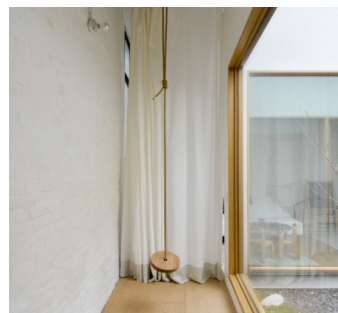
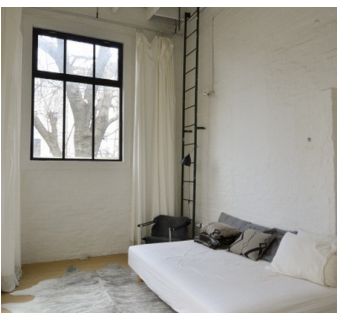
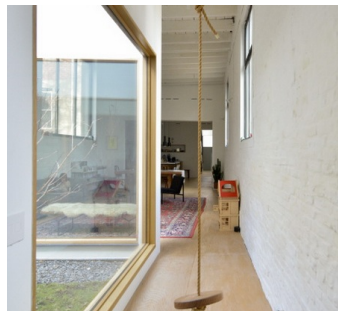
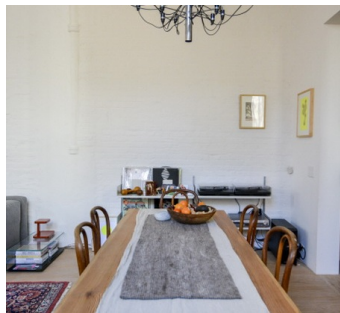
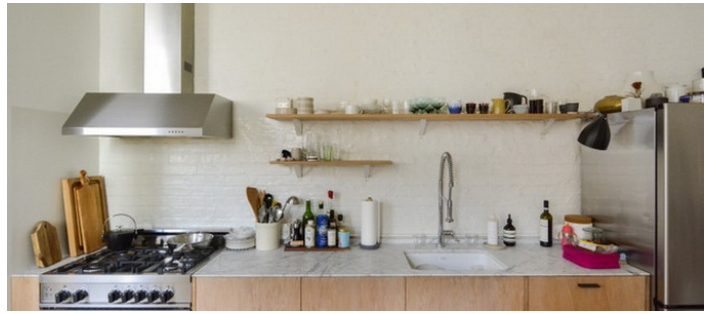
Areas of use determined in advance



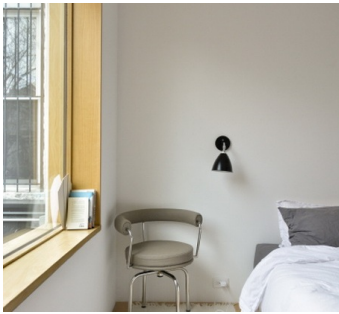
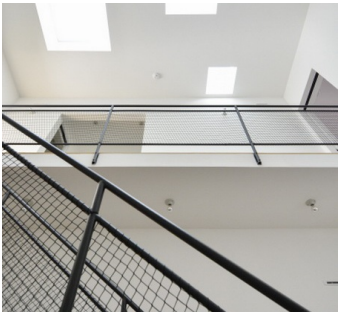
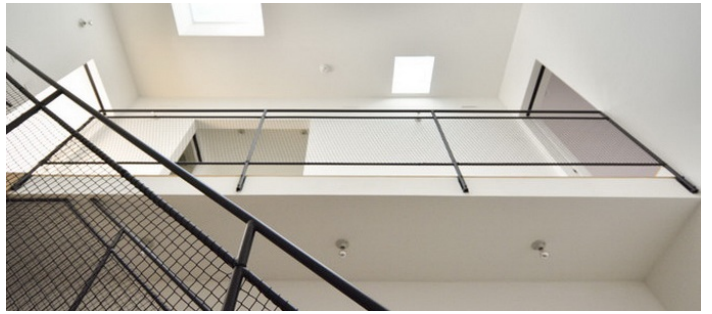
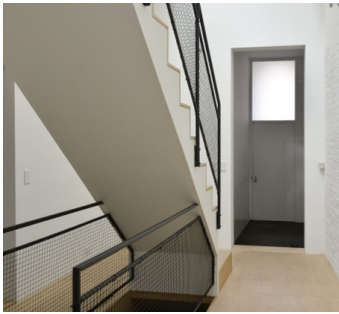
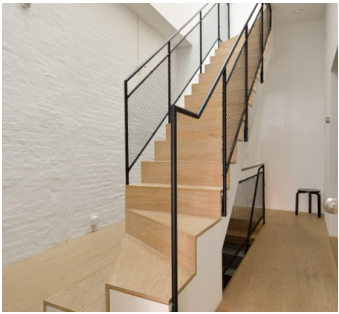
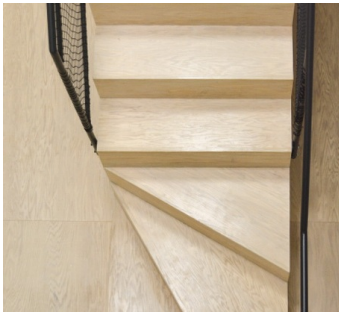
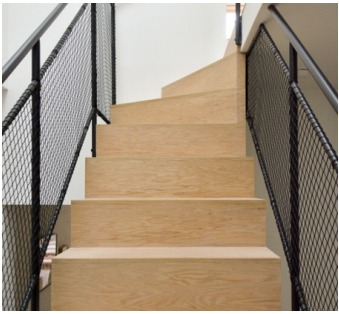
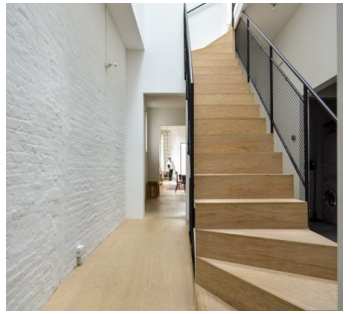
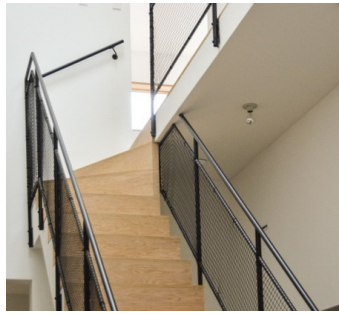
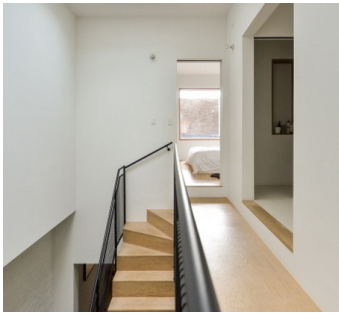
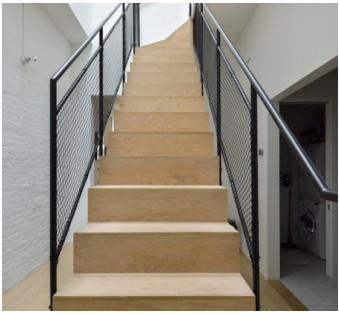
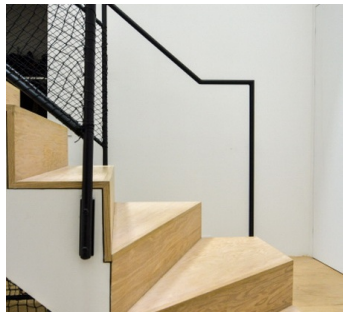
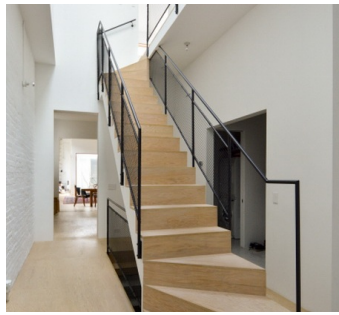
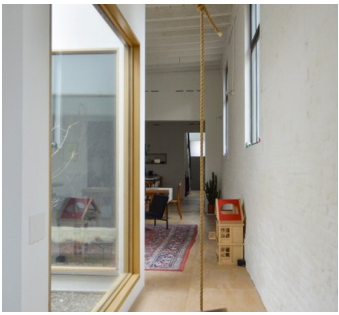




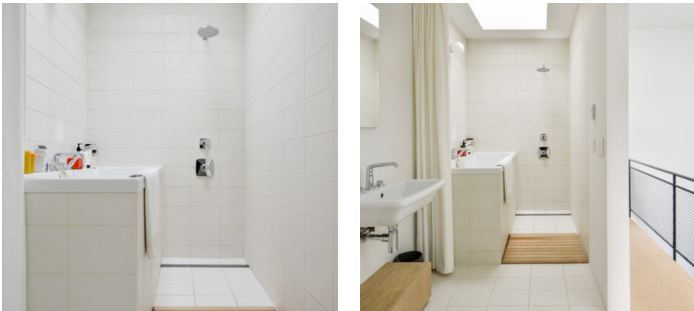
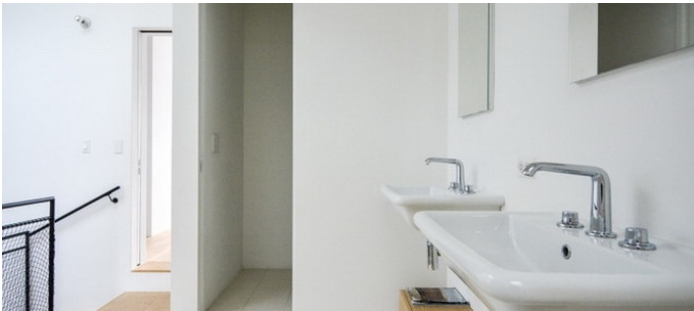
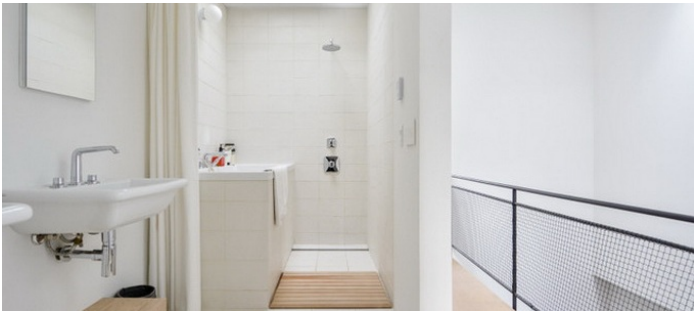
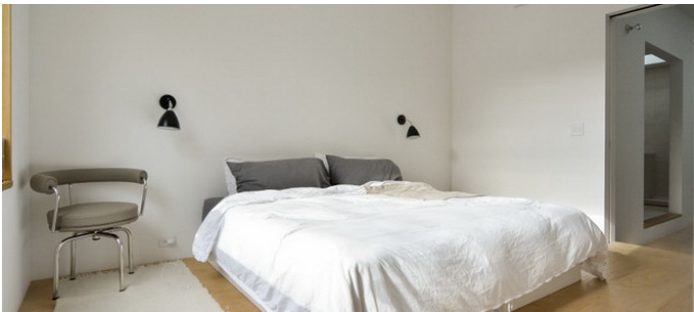


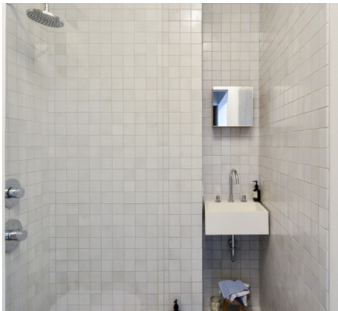
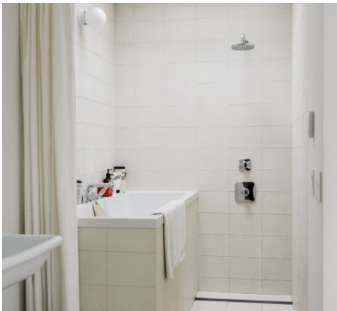
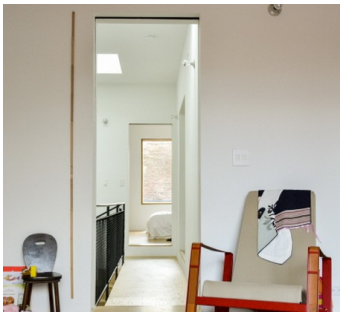












GARAGE



