

Private:
2622

Tribeca, Manhattan



LOCATION

New York, NY 10006



SPECS

6,000 sq ft

12-ft ceiling height



TAGS

Bathroom, Bedroom, Carpet, City View, Colorful, Kids Room, Kitchen, Library Room, Living Room, Modern Contemporary, Piano, Wallpaper, White Spaces, Wood Floor



CATEGORIES

Apartment, Lobby, Loft

Notes

Film possible, case by case basis

Welcome to a beautiful Tribeca loft. With many original details this home offers an open floor plan, ample natural light and space. Grand piano, built-in bookcase, modern furnishings, beautiful original molding on walls, french doors.

5 bedrooms, 4.5 baths, 2 kitchens.

Restrictions:

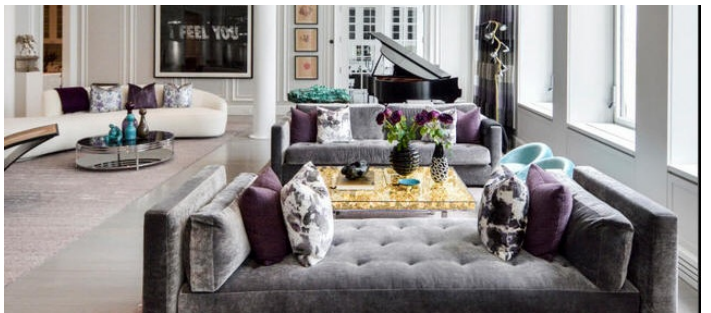
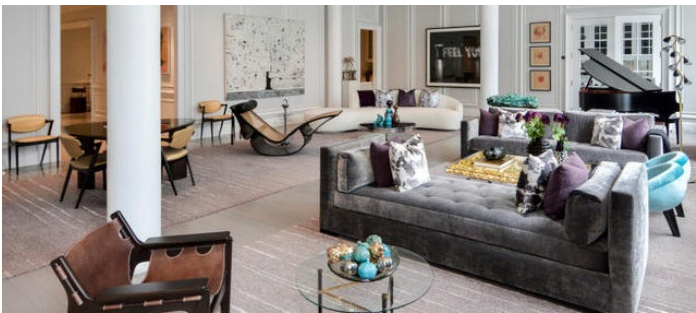
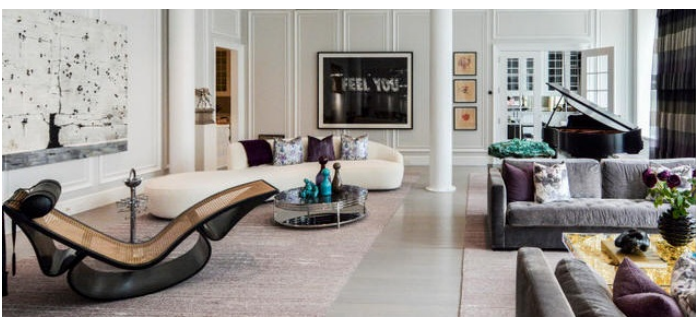
No shoes, all floors must be protected.

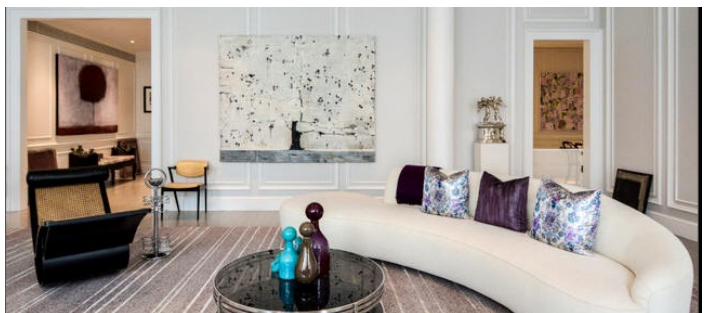
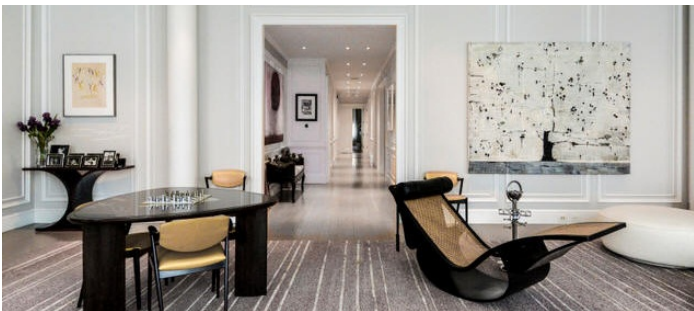
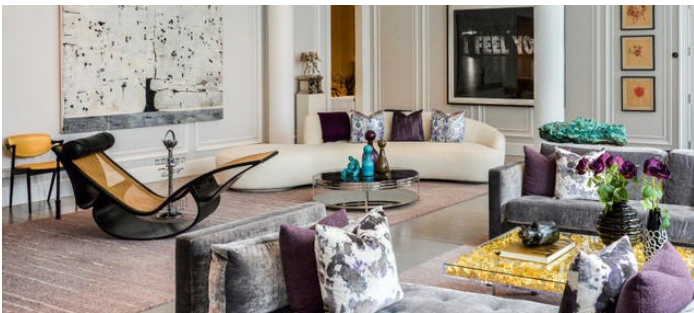
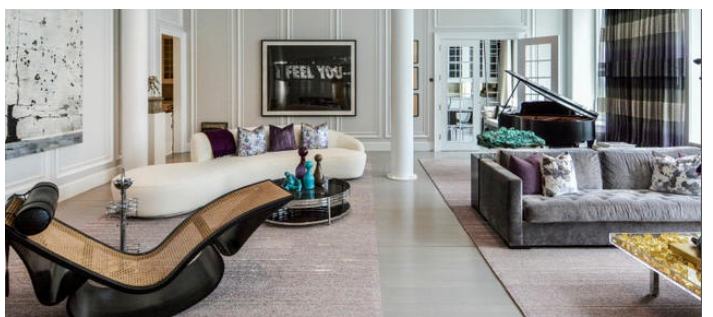
Rooms to use must be approved in advance.

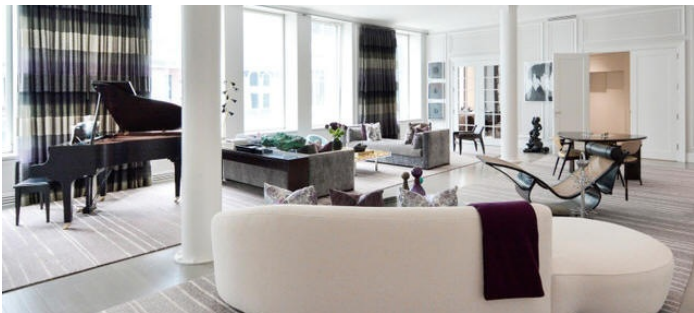
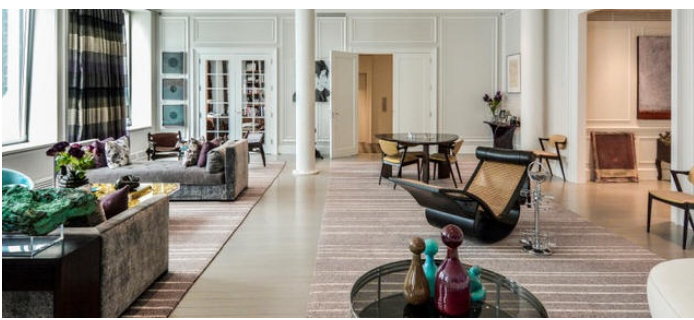
Moving furniture case by case and discussed in advance.

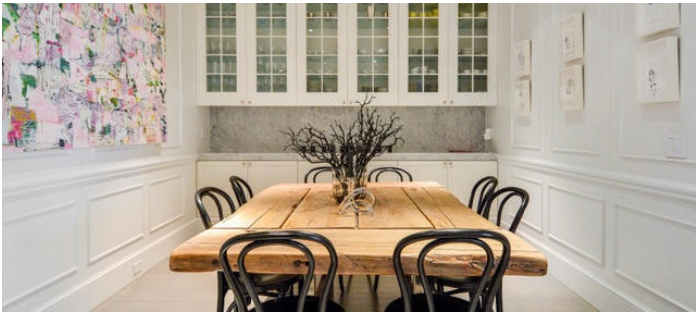
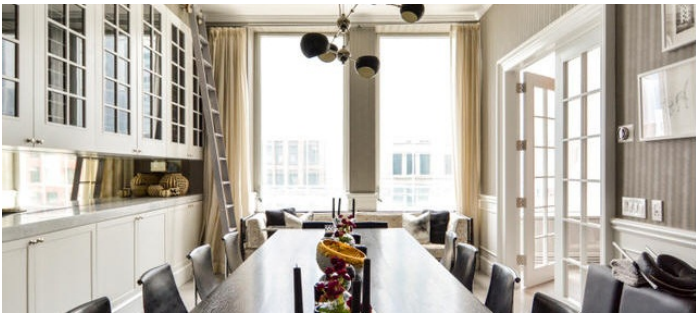
Building clearance may be required, elevator hours to be confirmed.

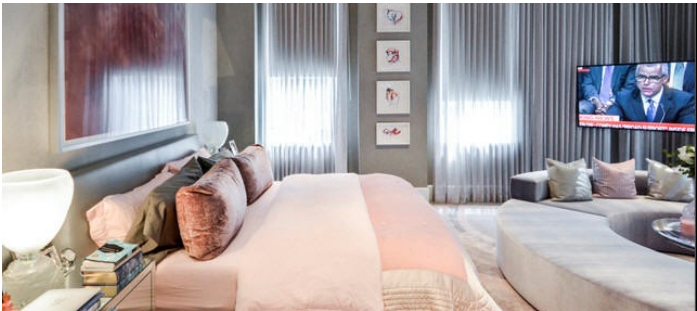
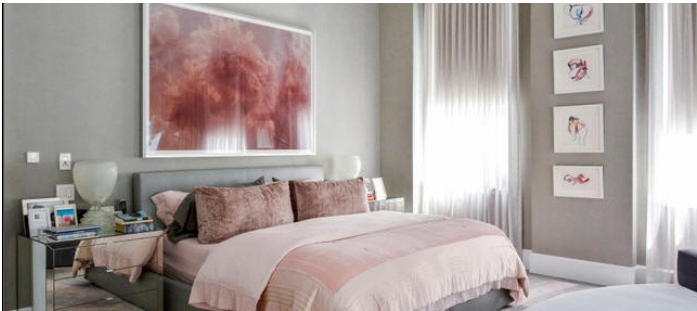
Common Areas of the building not available for shooting unless cleared in advance and additional fees paid (images here just to see how to enter).

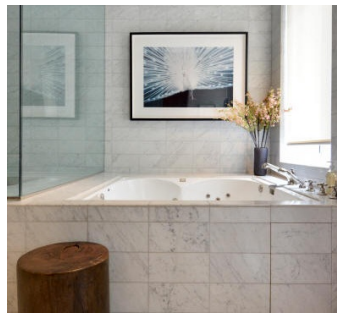
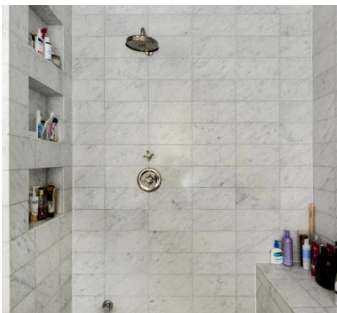
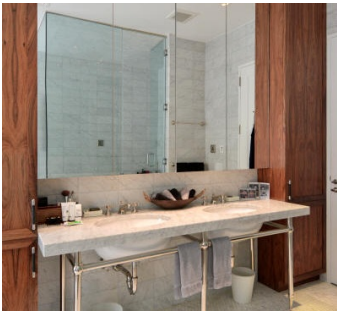
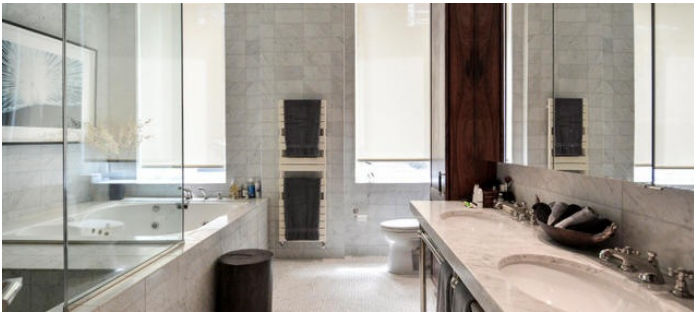
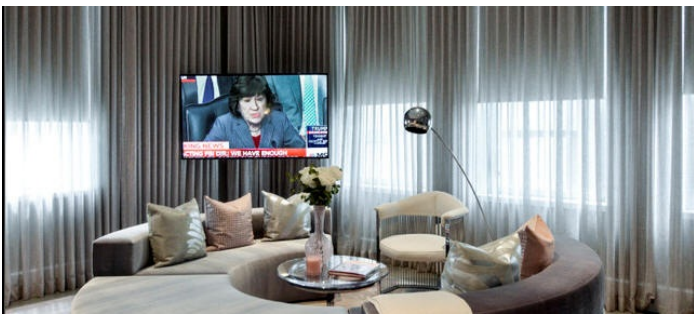


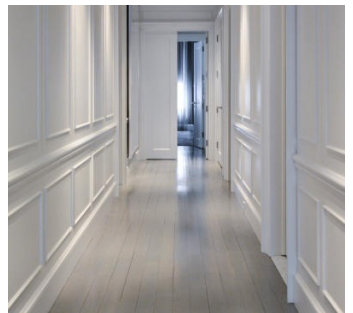
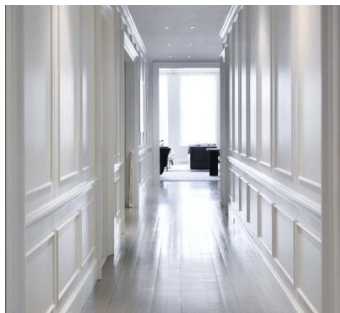
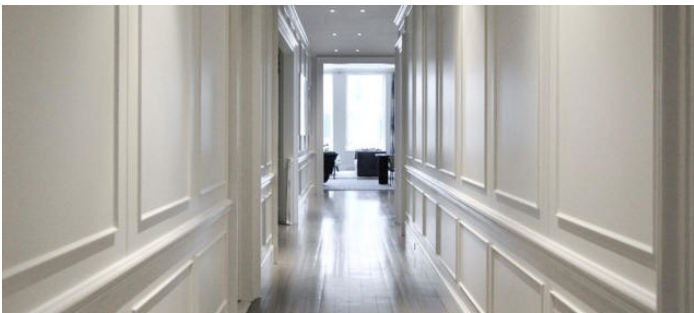
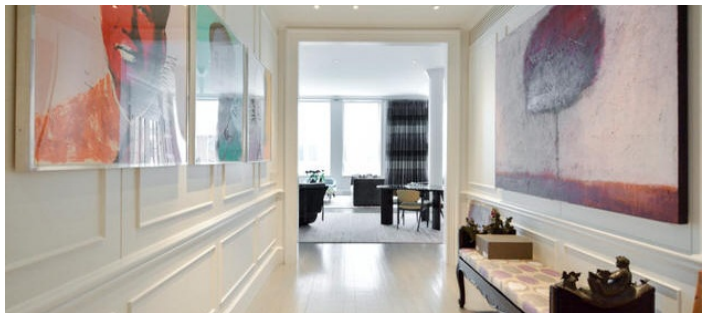
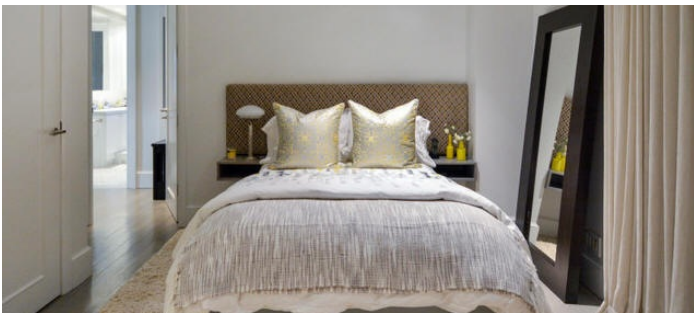
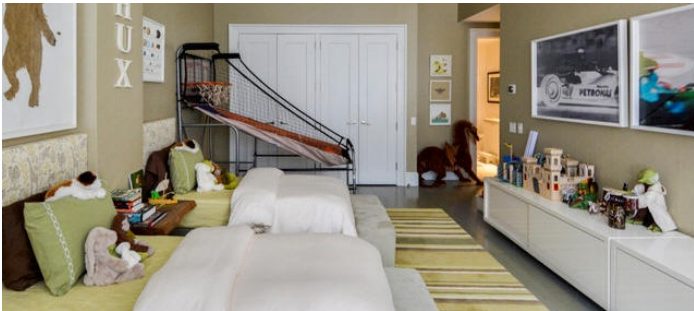


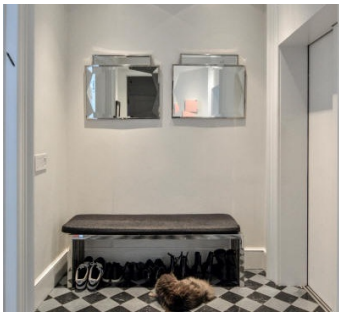
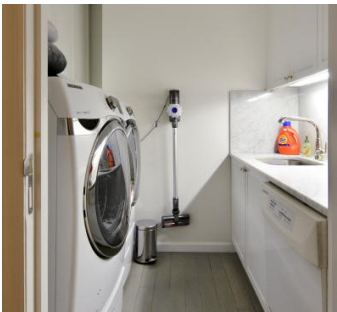












BUILDING COMMON AREAS -

Notes

Common Areas of the building not available for shooting unless cleared in advance and additional fees paid
(images here just to see how to enter)

