

8054

Navy Yard, Brooklyn

 LOCATION

Brooklyn, NY 11205

 CATEGORIES

* In the Zone, Warehouse / Factory / Industrial

 TAGS

City View, Distressed Patina, Dock Pier, Exposed Brick, Fence, Raw Industrial, River Stream, Water View

Notes

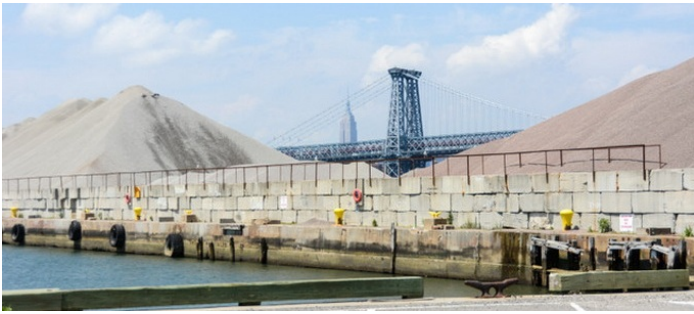
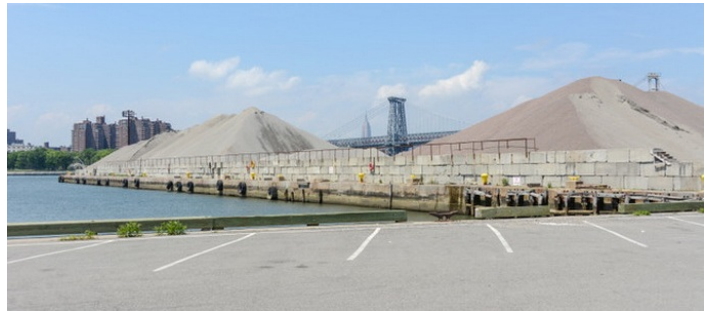
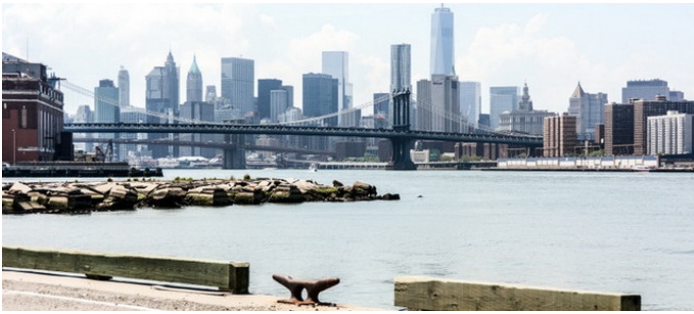
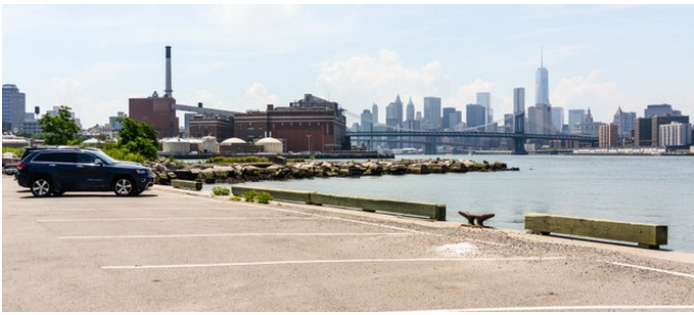
Film friendly

Great industrial look, must supply your own generator (no heat, no electricity (some buildings have power & need extension cords), no air conditioning, no bathrooms, no running water), also need a location van for all shoots,

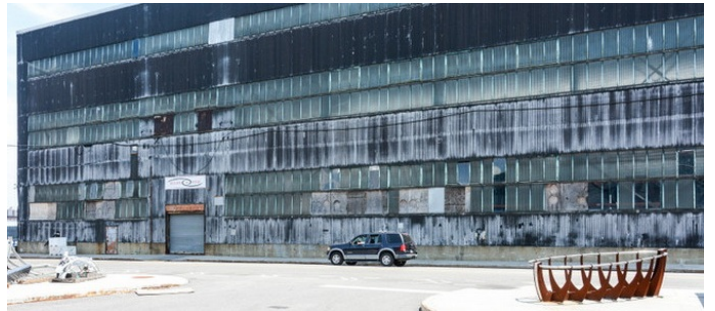
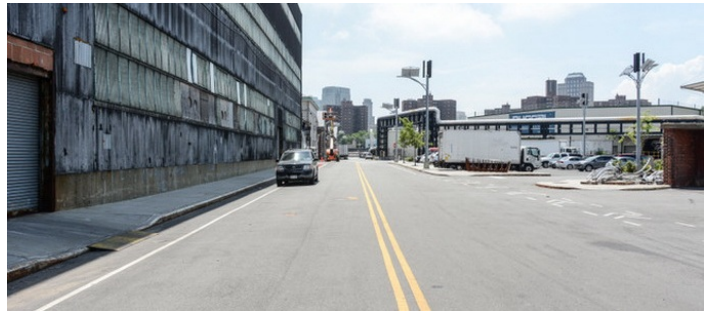
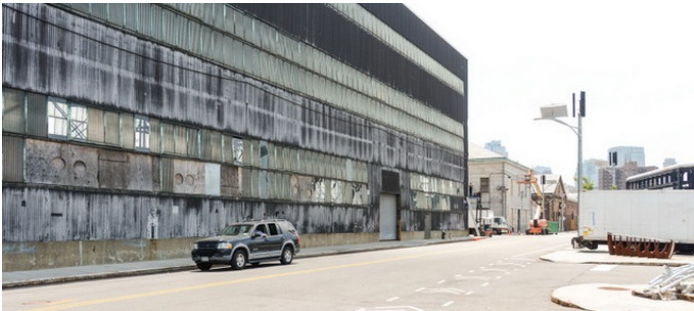
Scouting is Mandatory / Motorhome Mandatory - available interiors and exteriors change regularly

This is a huge space, all shoots must have an On-Set Producer, that has scouted and makes maps for all crew to enter to get to correct location

Fees vary according to areas of use and all must be specified in advance

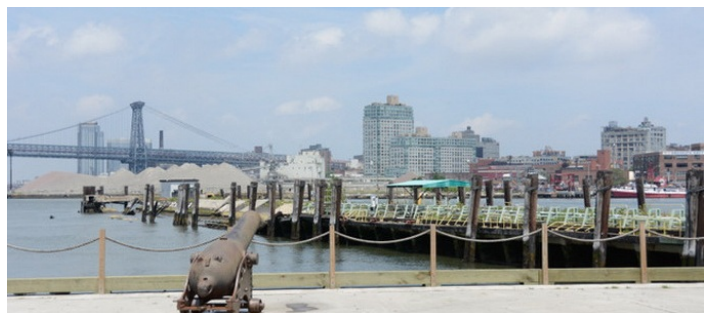
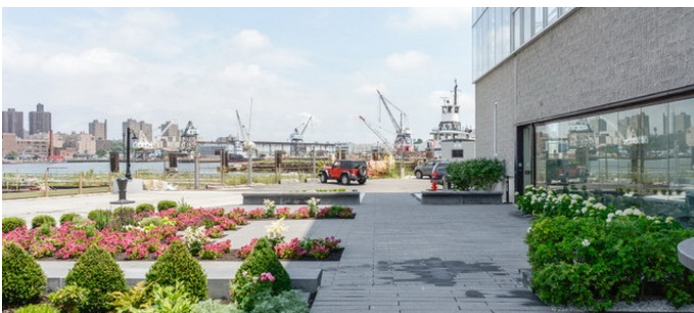
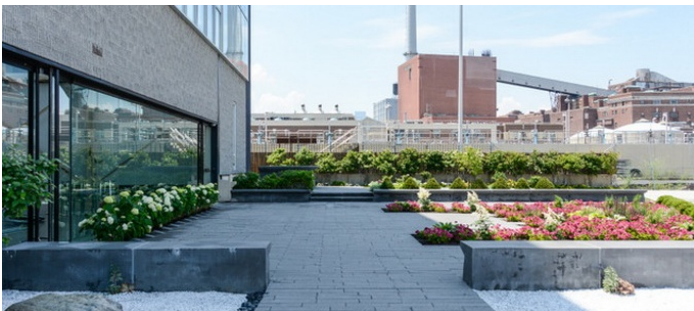








BIRTH 3-A - PIER REBUILT AND VIEWS HAVE CHANGED - SCOUTING RECOMMENDED





MORRIS AVE - BUILDING 11A AND 500





BUILDING 22/41 AND 25 (PERRY AVE BL - NEW))





LIFT BRIDGE - CAN ONLY SHOOT FROM A DISTANCE (NOT ON OR NEAR)



BUILDING 292 AND VIEW TO GMD SHIPYARD (SEPARATE PROPERTY)

