

AREA 2 - VIEW FULL DETAILS BELOW



LOCATION

Brooklyn, NY 11237



TAGS

Balcony, City View, Distressed Patina, Eclectic Quirky, Elevator, Exposed Beam, Exposed Brick, Fire Escape, Graffiti, Kitchen, Living Room, Raw Industrial, Rooftop, Skylight, Staircase, Staircase Ext, Terrace Patio, Traditional, White Brick Wall



SPECS

Square Footage: 15,000
Ceiling Height: 24' to 37'
Dinner Capacity: 220
Cocktail Capacity: 1,500



POWER

300 amp cam-lok



CATEGORIES

* In the Zone, Apartment, Event Space, Loft, Roof Top Studio, Warehouse / Factory / Industrial

Notes

Area 2 - 2,600 sq. ft. [Approx. 52' x 50'], Ceiling Height: 24' floor to A-Frame ceiling, Load-bearing Beams: 13' from floor, 12' apart, Ground Level/Drive In (through Courtyard or A3), Loading Bay to Courtyard (8' x 10' h) - manual. Accessible via AREA 3 loading bays. Quick and easily blockable skylights. Connects to 2600 sq. ft. Courtyard and Drive and 4000 sq. ft.

Area 3 - Connects to Hair & Make-up Room, ExecutiveHair & Make-up Room• Fully Heated/ Vented • Suitable for flooding - water source on stage• Suitable for pyrotechnics (concrete/ brick construction). On-site distro package available for rent - please check with staff regarding availability prior to shoot

It is possible to drive into the Courtyard from the Driveway

Loft Apartment, a sunny 1500 square foot, two bedroom residence - complete with wood-beam ceilings and raw brick walls.

Many props available for rental, charged per piece. Must scout to determine what is needed

Restrictions:

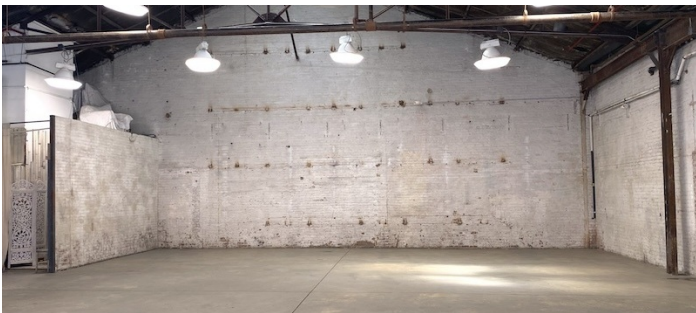
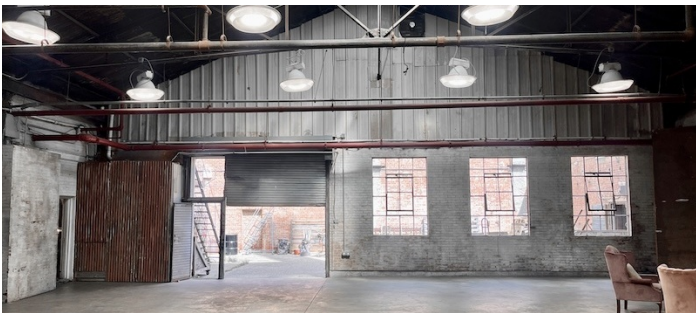
Areas of use must be determined in advance. All fees are determined by areas of use.

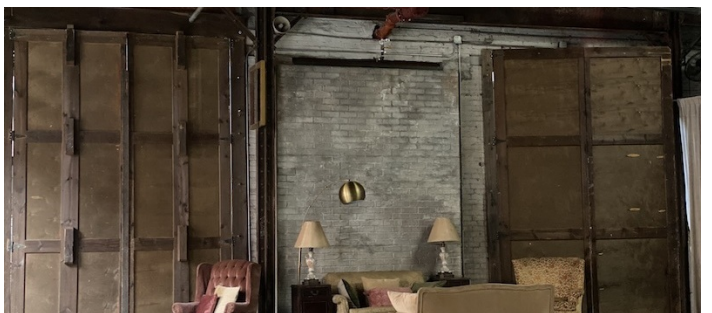
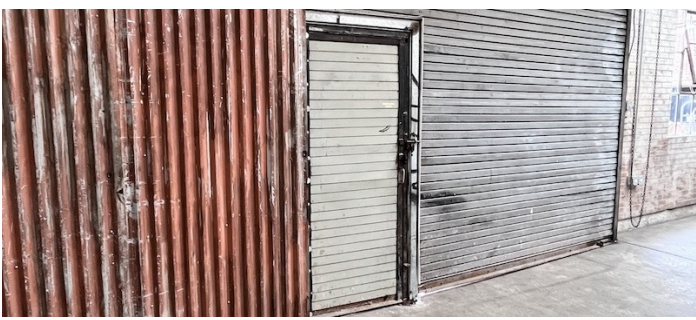
Security Deposit required for all shoots.

Roof has some restrictions and must be requested separately from the rest of the space, restricted amount of people permitted on roof.

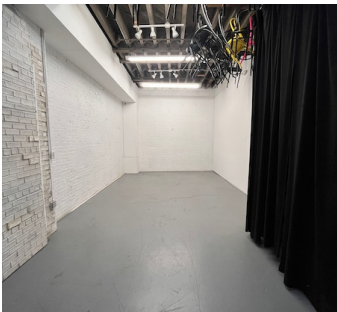
All equipment can be rented through the location.

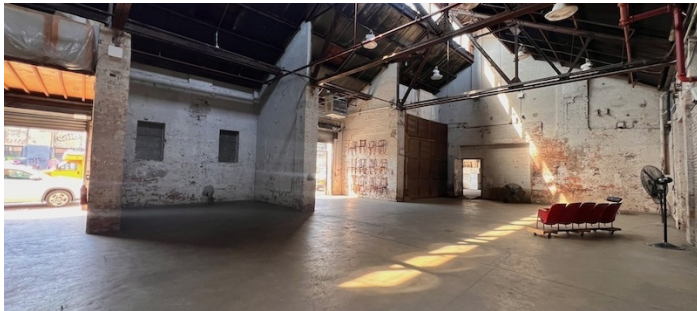
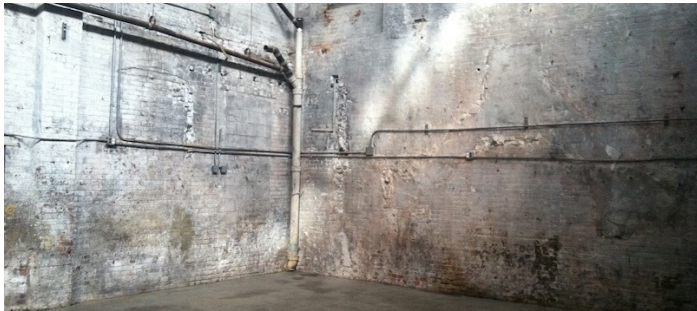
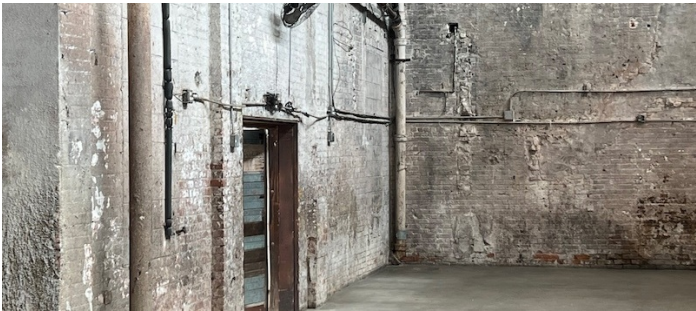
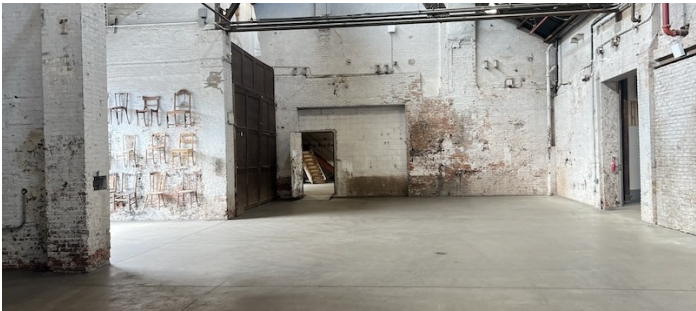
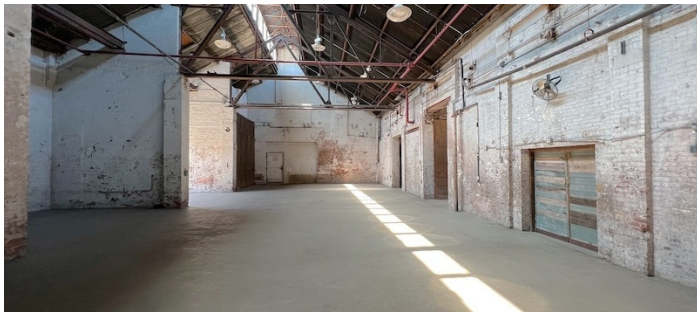
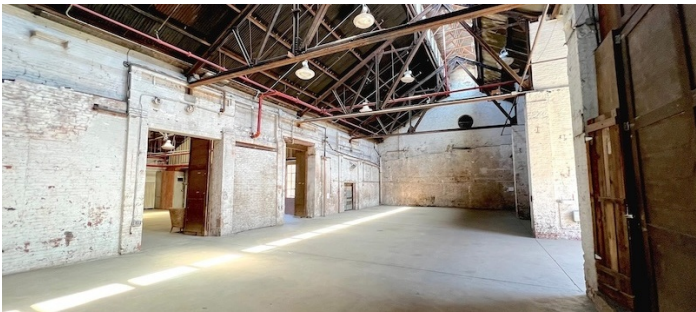
Please note this location has a standard shooting hours of 8am-8pm, anything before or after those hours are higher fees and considered overtime even if no overtime.

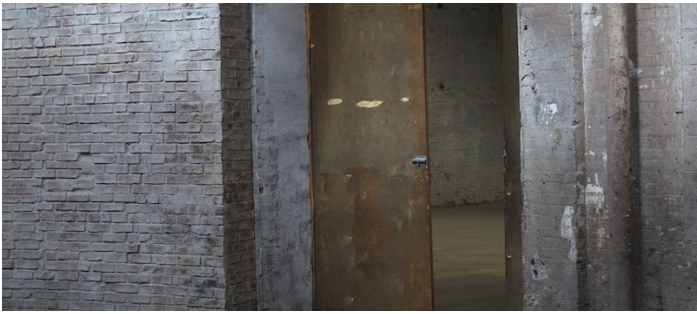
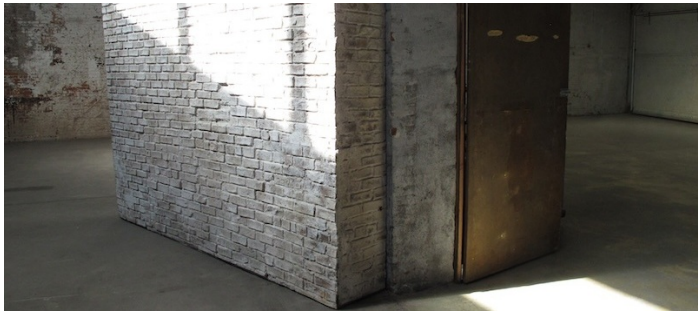
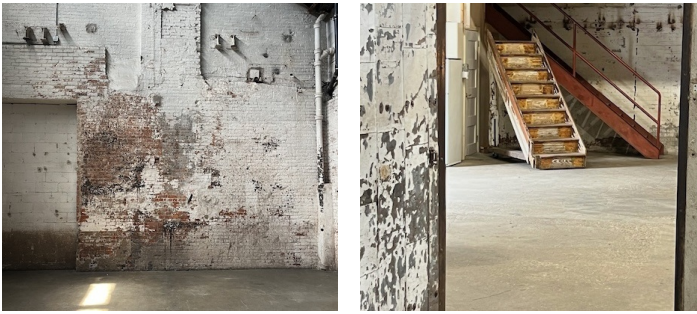
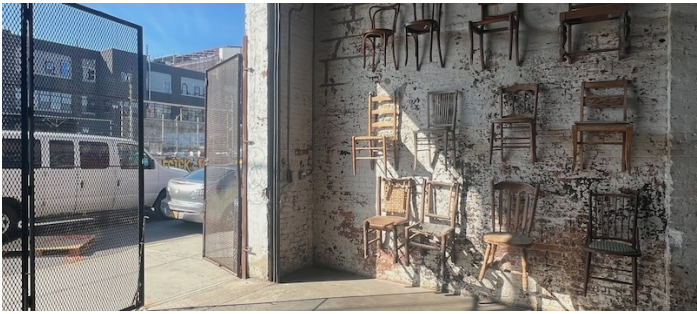


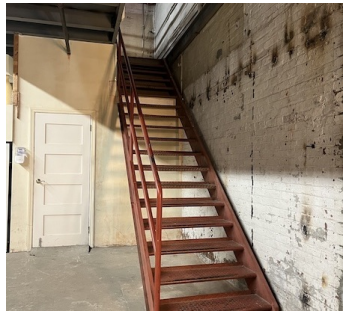
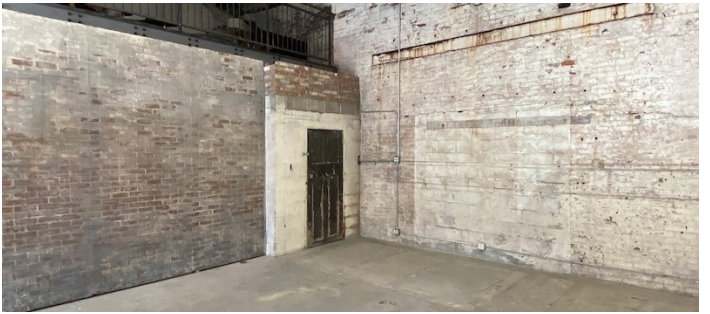
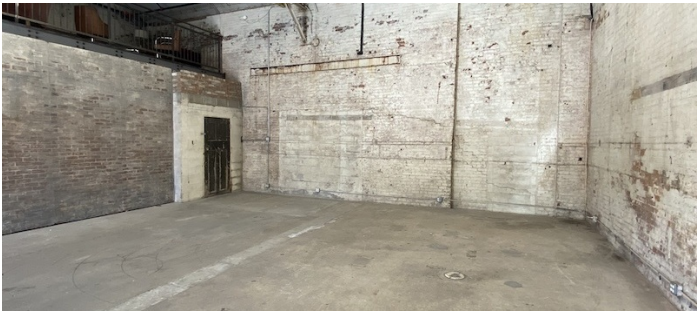
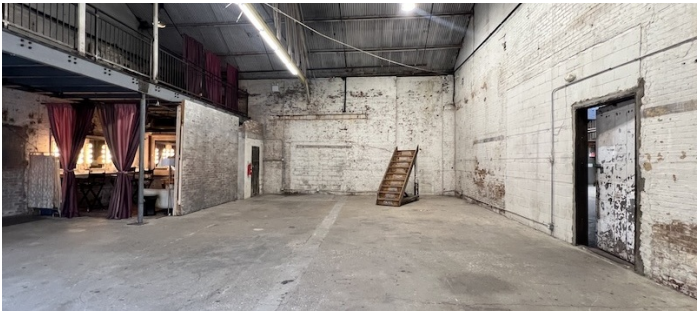
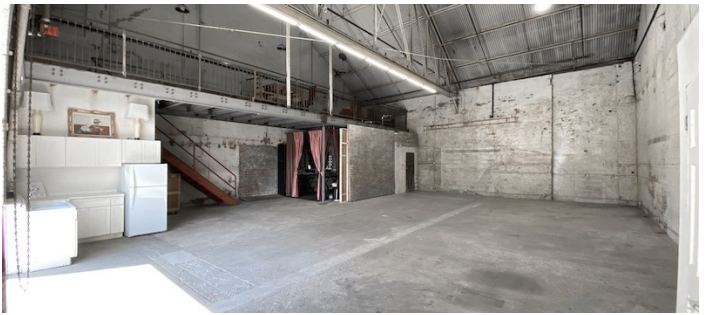




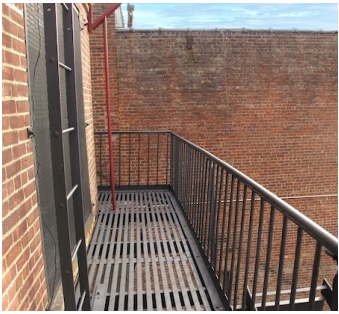
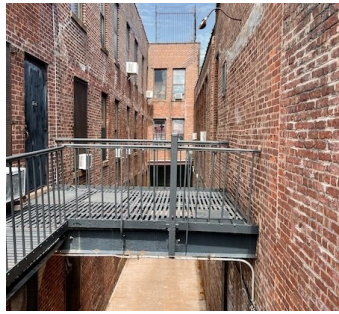
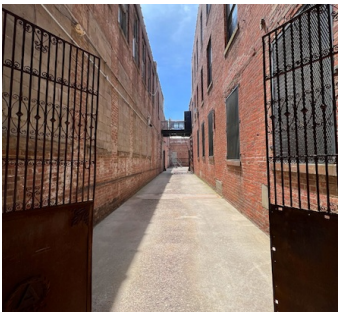


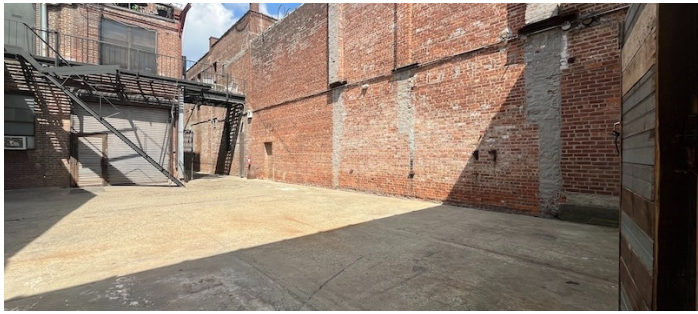
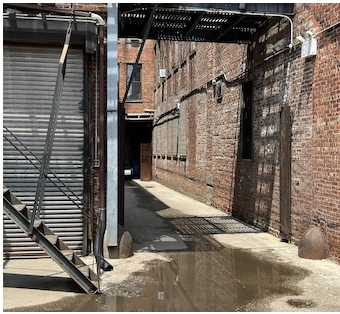


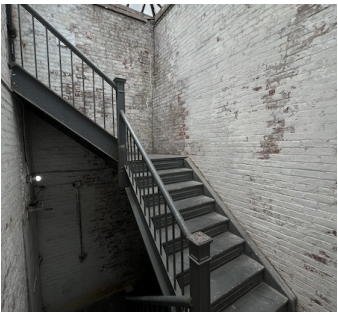


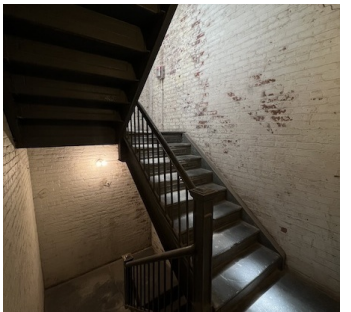
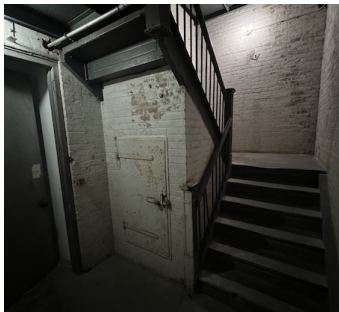
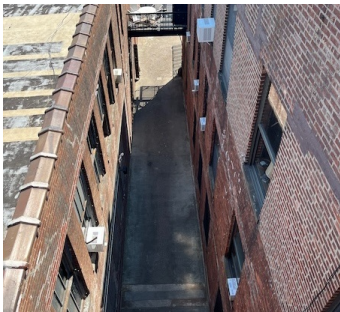


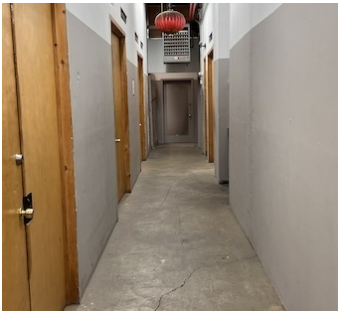
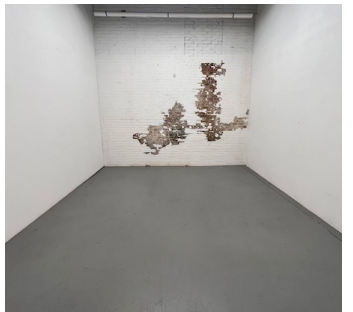


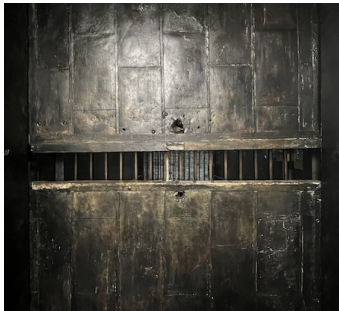


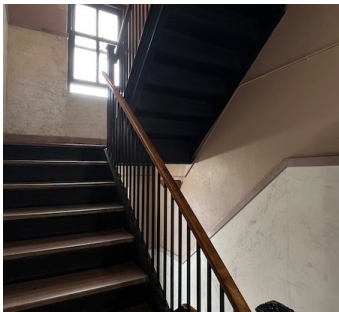
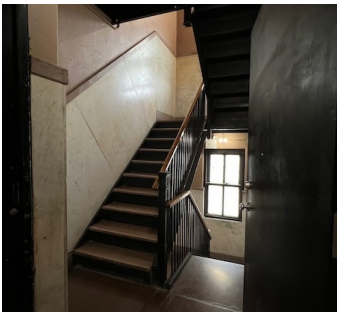


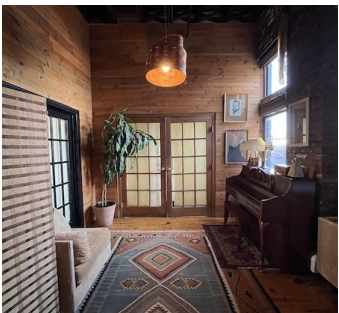
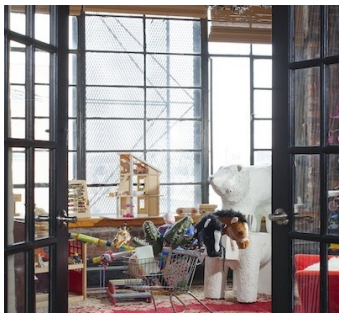












EXTERIOR

