



## 8224 Long Island City, Queens

### LOCATION

Long Island City, NYC

### TAGS

City View, Distressed Patina, Elevator, Empty, Exposed Brick, Fire Escape, Raw Industrial, Rooftop, Staircase Ext, Wood Floor

### SPECS

15,000 total square feet  
Rooftop - 6,000 sq ft  
Studio A - 3,200 sq ft  
Studio B - 1,200 sq ft  
Studio C - 2,500 sq ft  
Studio D - 1,000 sq ft  
Studio E - 1,300 sq ft

### POWER

100 amp 3 phase power supply

### CATEGORIES

\* In the Zone, Event Space, Loft, Roof Top, Studio, Warehouse / Factory / Industrial

### Notes

15,000 total square feet, North and West facing 10 ft windows, 12 ft ceilings

Rooftop studio 360 degrees unobstructed views of Manhattan, Queens and Brooklyn. Views of the 59th Street Bridge. Over 6000 sq ft available for shooting on roof

Access to fire escapes with amazing metal textures

Equipment rentals from the studio preferred

#### Restrictions:

Fees vary according to areas of use

Areas of use determined in advance





## STUDIO A - 3200 SQ FT

### Notes

3200 Square Feet

North and west facing 10 ft windows - 14ft ceilings, 12 ft to exposed I-beams

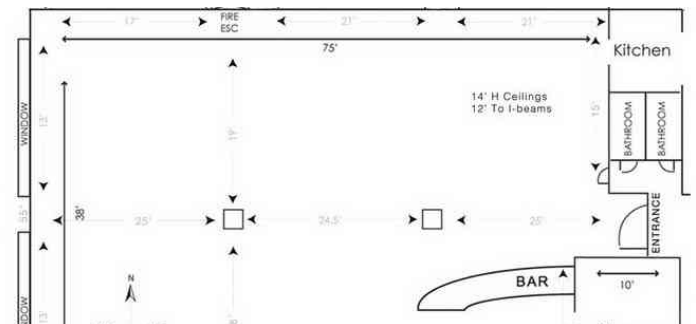
All white brick walls, vintage hardwood floors

WiFi, phone & fax, Client area and production tables, Makeup mirror, garment racks, steamer with metal head. Shampoo sink and chair. Deep basin commercial sink

Full black out capability, Access to common area and Cafe, Freight elevator to studio level

Breakout rooms available







## **STUDIO B - 1,200 SQ FT**

### **Notes**

1200 Square Feet, Windowless black out, 18ft wide deep-curve cyclorama

All white walls, Vintage hardwood floors

14ft ceilings, 12ft to exposed I-beams

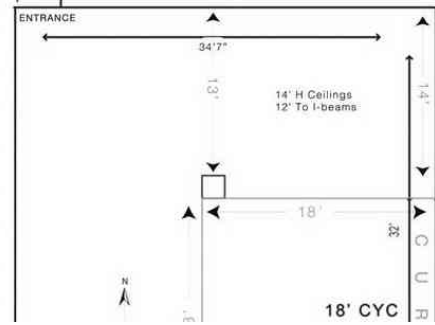
Client area, Flatscreen with Sony PS3

Makeup mirror, garment racks, steamer with metal head

Access to common area and Cafe

Freight elevator to studio level

Breakout rooms available





## **STUDIO C - 2,500 SQ FT**

### **Notes**

2500 Square Feet, Natural daylight studio, near-full blackout available, West and south facing, 12 ft windows

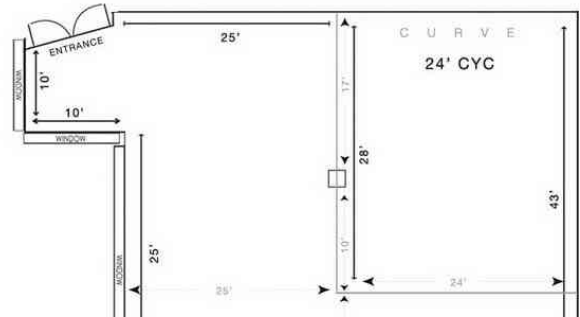
24ft wide deep-curve cyclorama, All white walls, Distressed finish concrete floors, 16ft ceilings

Client area and production tables

Makeup mirror, garment racks, steamer with metal head

Access to common area and Cafe, Freight elevator to studio level

Breakout rooms available







## **STUDIO D - 1,000 SQ FT**

### **Notes**

1000 Square Feet, Blackout Studio, Two large sets of double doors allowing daylight in, Distressed finish concrete floors, 16ft ceilings

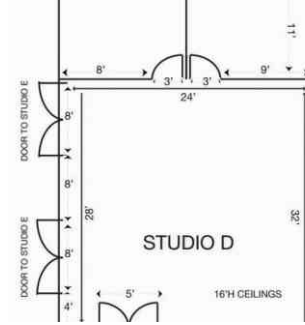
Recessed enclave perfect for 9ft Seamless paper setup, All white walls

Client area and production tables

Makeup mirror, garment racks, steamer with metal head

Access to common area and Cafe, Freight elevator to studio level, Additional breakout rooms available

Combined with Studio E for 2500 sq ft total





## **STUDIO E - 1,300 SQ FT**

### **Notes**

1300 Square Feet, Natural daylight studio, full blackout capability

North facing 12 ft windows Distressed finish concrete floors, 16ft ceilings, 20ft wide deep-curve cyclorama, All white walls

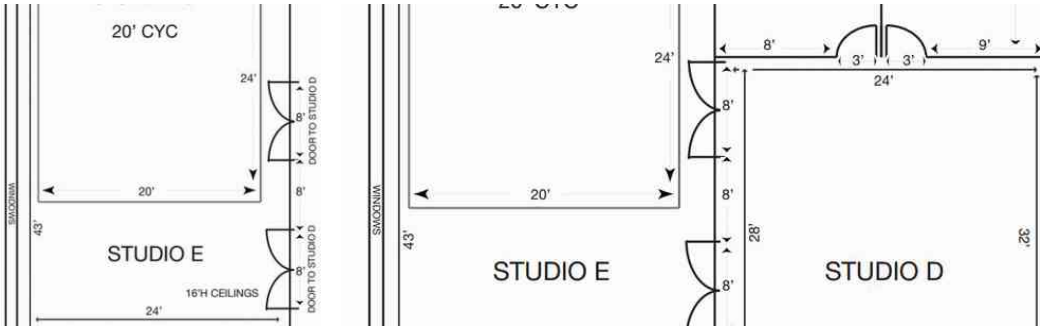
Client area and production tables

Makeup mirror, garment racks, steamer with metal

Access to common area and Cafe, Freight elevator to studio level

Breakout rooms available

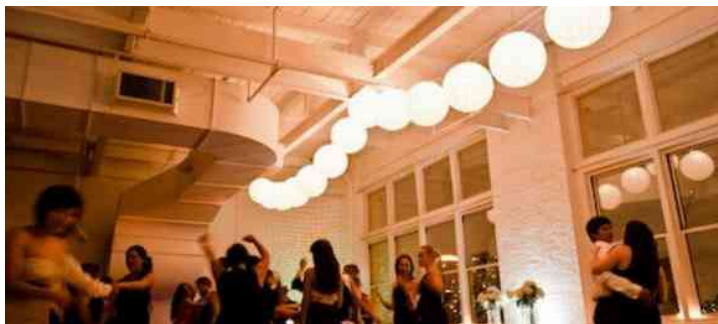
Can be combined with Studio D for 2500 sq ft total





## SAMPLE IMAGES OF SHOOTS/EVENTS IN STUDIOS







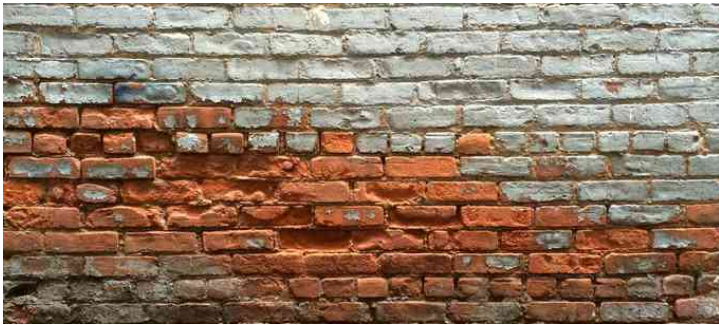


## **BOILER ROOM**

### **Notes**

Exposed brick with many textures and tones  
Natural light thru ceiling port openings  
Fully electrical capability  
Original details of weathered walls and floor







**FIRE ESCAPE + FREIGHT ELEVATOR**



