

Private:
2465


Chelsea, Manhattan

 LOCATION

New York, NY 10011

 TAGS

Balcony, Bathroom, Bedroom, City View, Deck, Fireplace, Floor to Ceiling Windows, Kitchen, Living Room, Modern Contemporary, Rooftop, Staircase, Terrace Patio, Wood Floor

 SPECS

3,000 sq ft duplex
1,000 sq ft terrace

 CATEGORIES

* In the Zone, Apartment, Duplex, Loft

Notes

Film friendly

Amazing, 6th Floor Penthouse, 3000 sq ft duplex with 1000 sq ft terrace and real lawn overlooking the Hudson, floor to ceiling windows, light wood floors, glass staircase, slate floor, large kitchen and bathroom.

Floor to ceiling windows, open, modern, hard wood floors, staircase, fireplace, deck, kitchen island.

Restrictions:

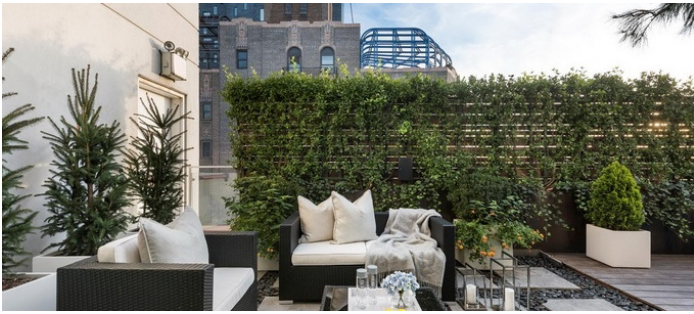
Expensive, and building fees apply for all shoots; building clearance needed for all shoots.

No weekend shoots permitted (sometimes small print shoots will be allowed but not large shoots).

No one may hang out in lobby, elevator or any public areas of this building, very important.

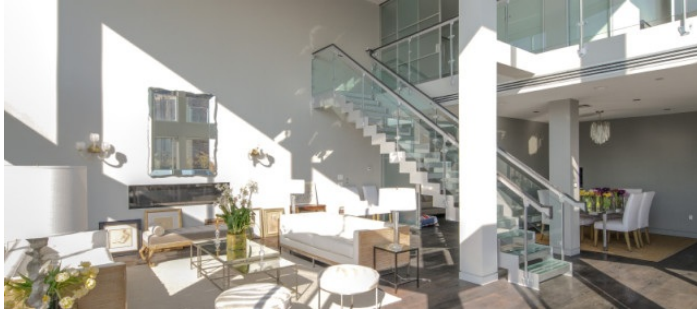
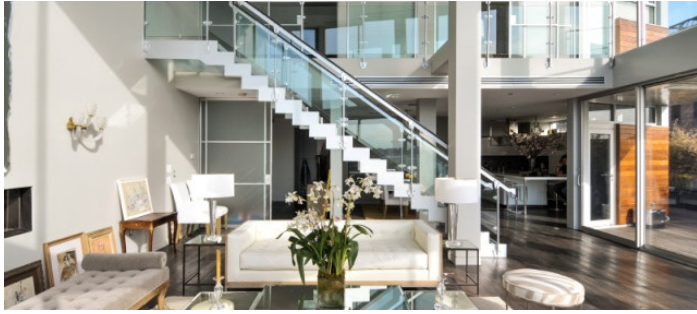
No shoes in home, floors to be protected.

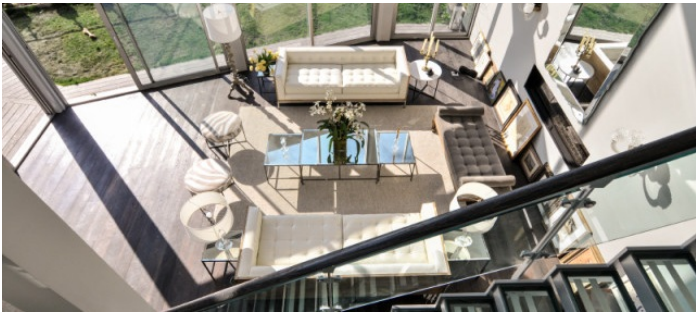
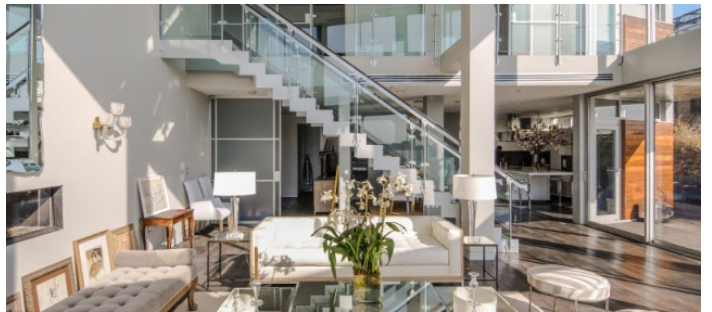
Bedrooms and office off limits unless approved in advance, art may not be shot in its entirety without copyrights, etc.

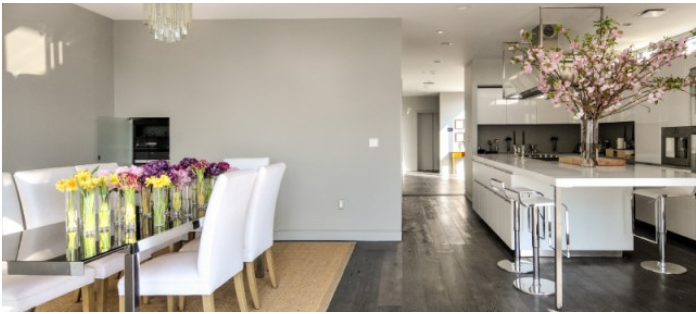
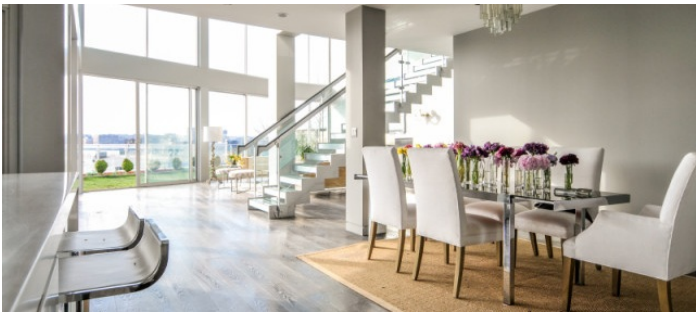


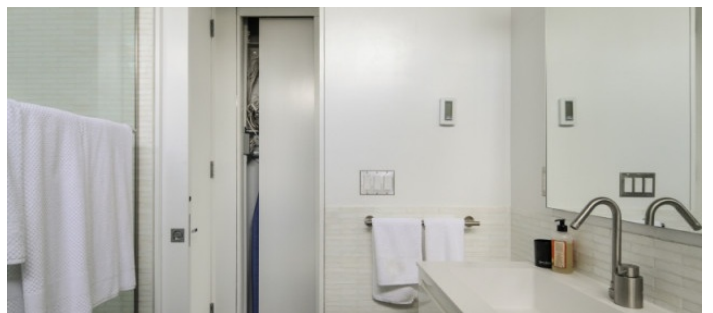
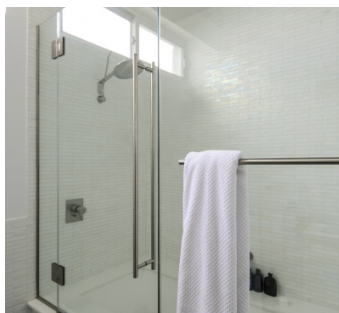
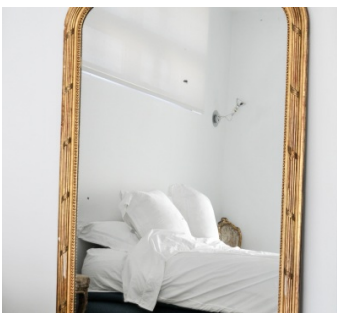
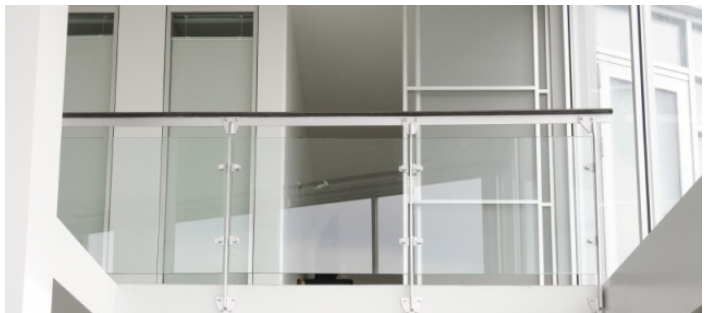
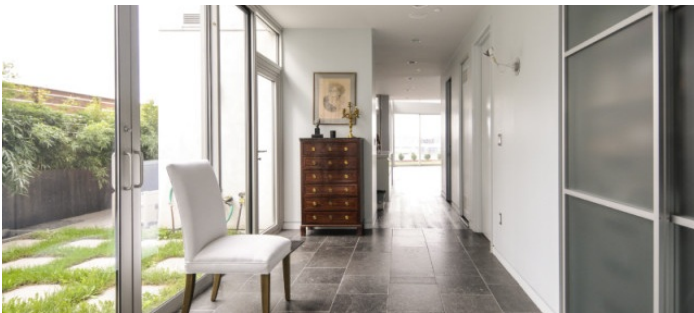
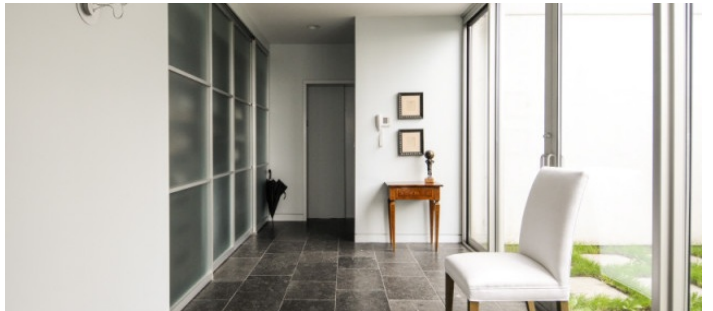


OLDER IMAGES











MASTER BEDROOM AND BATH - OFF LIMITS UNLESS SPECIAL CLEARANCE

Notes

Master bedroom and bathroom are always off limits unless special clearance has been given and additional fees paid

