



## 3187 Cobble Hill, Brooklyn

### LOCATION

Brooklyn, NY 11201

### TAGS

Bathroom, Bedroom, Exposed Brick, Fireplace, Kids Room, Kitchen, Living Room, Modern Contemporary, Parquet, Skylight, Staircase, Terrace Patio, Wood Floor

### DIMENSIONS

1,100 sq ft x 3 floors  
11' ceiling height

### CATEGORIES

Apartment, Loft, Townhouse

### Notes

Newly renovated 25' wide greek revival townhouse in charming street-lined Cobble Hill. The home is to be featured in Architectural Digest and designed by Athena Calderone.

The parlor floor is very grand with 11' ceilings and although you are in a historical townhouse, the open floor plan feels like a vast, wide loft. The all glass doors at the back of the home, just beyond the kitchen completely open to a 14x14 terrace in a bifold, basically inviting the outdoors in as an extension of the kitchen.

Herringbone floors, ornate molding details and a black marble fireplace, massive light-filled kitchen create an elegance expression of traditional meets modern. The entire 2nd floor is the master suite, master closet and master bathroom with a fireplace in the bathroom. The third floor boasts a dark and moody family room with a library wall and a skylight. Plus 3 additional rooms, a home office, teens bedroom, and a small guest room. There is a lower garden but it has not been completed.

#### Restrictions:

Homeowners work from home - recording studio or child's room on 3rd floor off limits.

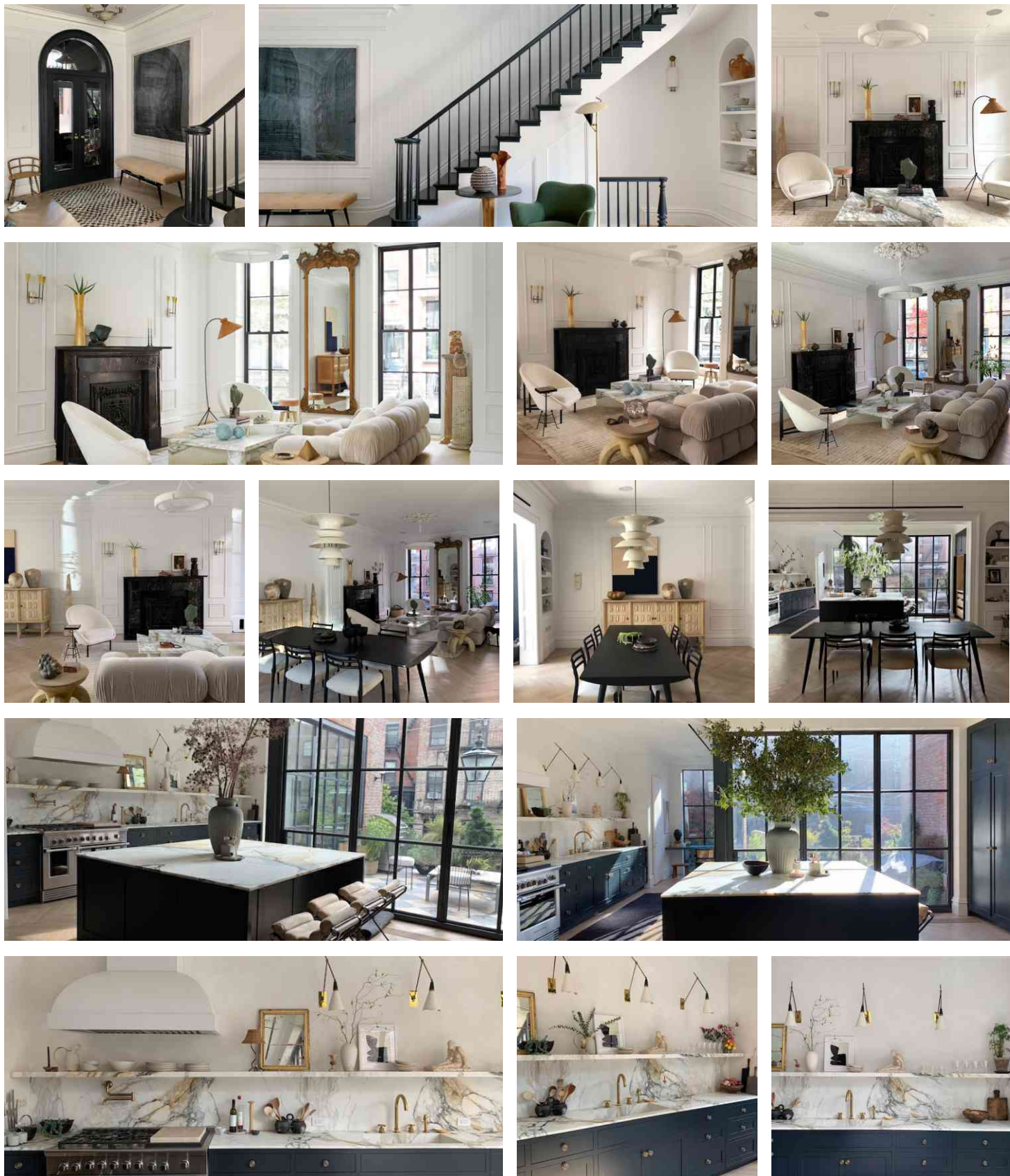
The marble coffee table on the parlor floor is EXTREMELY heavy so three men are needed to move. The sofa on the parlor floor and the sofa in the 3rd floor family room are both light cream colors, please cover.

Dining table is a delicate finish, please protect the table especially if anyone sits to eat or is using a computer at the table.

Marble in kitchen should be covered when used for catering.

3rd floor family room walls are a delicate plaster finish, nothing can be taped.

If removing art or furniture we would like to be notified and ask that they be professionally handled. No painting of walls. Use of fireplace must be approved.







## 2ND FLOOR





**3RD FLOOR**





## TERRACE PATIO



