



LOCATION

Morristown, NJ 07960



SPECS

32,000 sq ft
7.3 acres



DISTANCE FROM NYC

34 miles



TAGS

Backyard Lawn, Bar, Bathroom, Bedroom, Billiard Table, Carpet, Classic Grand, Colorful, Exposed Beam, Fence, Fireplace, Garage, Garden, Historic, Kitchen, Living Room, Ornate, Piano, Porch, Skylight, Stained Glass, Staircase, Staircase Ext, Stone Wall, Sun Room, Terrace Patio, Traditional, Tudor, White Brick Wall, Wood Floor



CATEGORIES

* In the Zone, House, Mansion

Notes

The tudor-style mansion was built in 1917 and inspired by Compton Wynyates, a 16th-century castle in Warwickshire, England and today, is on the National Register of Historic Places.

Inside the castle walls, the Great Hall and Library boast sections of 400-year-old Oak paneling taken from Compton Wynyates, while other parts of the interior consist of reclaimed wood from old English mansions, castles, cathedrals and shipyards from all over the world. From 1952 until the 1990s the well-known map making firm General Drafting Company occupied the mansion.

Today, the mansion is a private residence, having been restored and brought back to life to reflect the Tudor style castle it once was, with homage to keeping its original 100-year-old charm and characteristics. The mansion features 575 antique stained-glass and old leaded muntined windows, more than 60 rooms, 18 chimneys and has multiple secret doors and hidden passageways. The impressive updated state-of-the art kitchen still boasts old-world charm while being equipped with a custom high-performance cooking suite with ten-burner range, imported from Florence, Italy and made of heavy gauge steel and burnished brass details.

The rear of the castle opens up to a beautiful back terrace overlooking the glen, vibrant gardens and a serene pool where a moat once stood. The terrace is equipped with everything one needs to entertain the night away, including an open air dining area, an outdoor kitchen and bar, complete with wood-burning pizza oven and a cozy firepit lounge.

The medieval furnishings and décor that fill the revival mansion come from all over the world as well as local antique shops, while Gargoyles, Tudor roses, Celtic knots, French-imported fountains and coats of arms are also featured throughout the property.

Restrictions:

Master Bedroom wing/Offices/Apartment are restricted areas.

Wine cellar requires advance approval and supervision while using.

OK to move anything at the location as long as put back exactly as found.

No nailing or painting of walls.





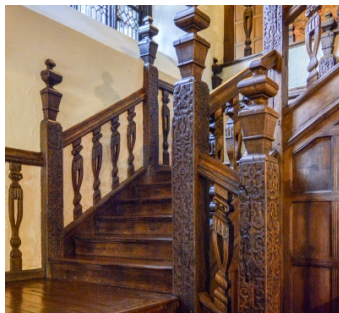
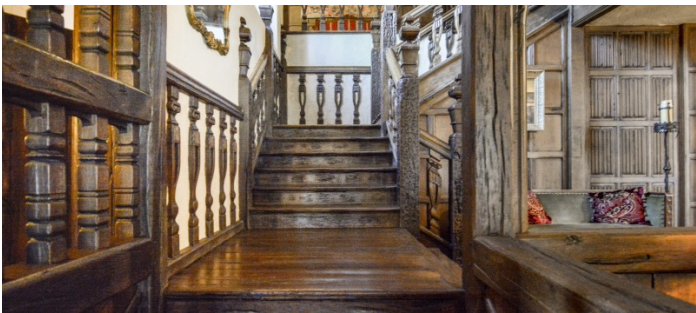




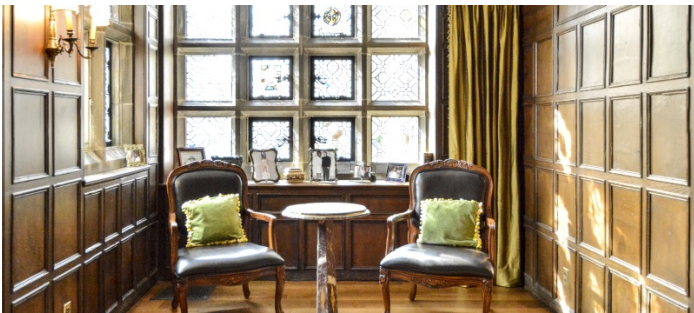


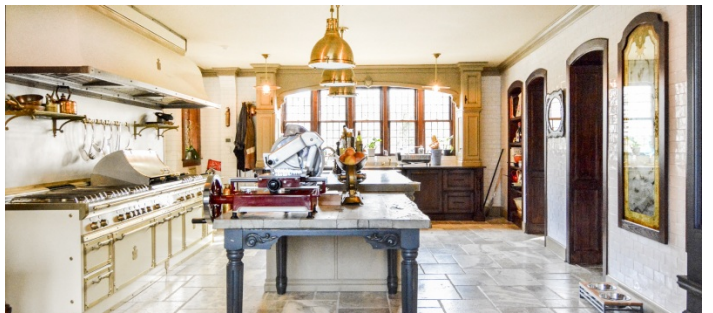
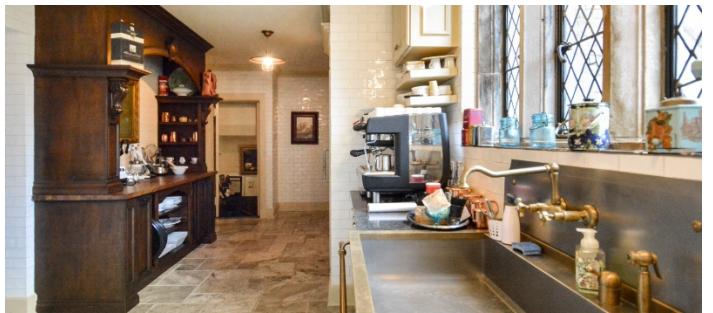
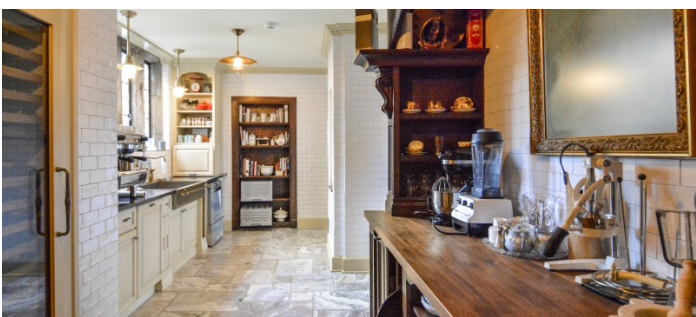
1ST FLOOR





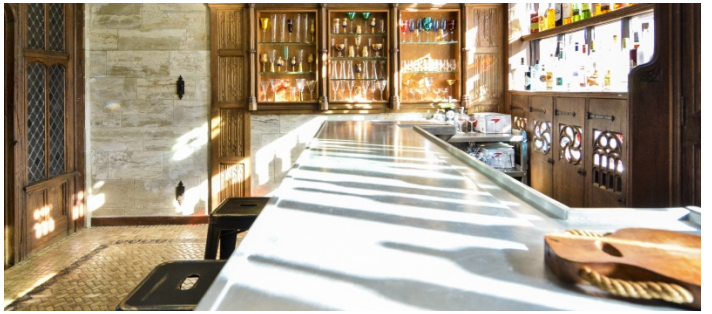
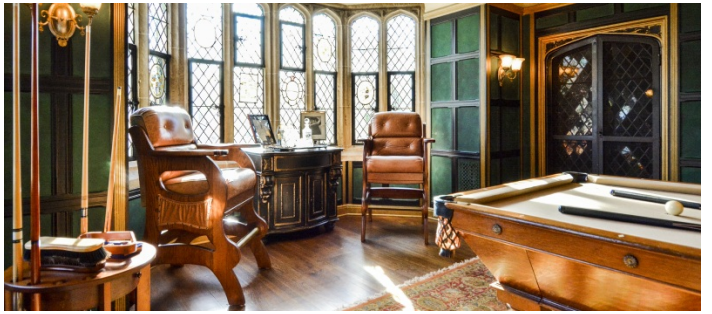


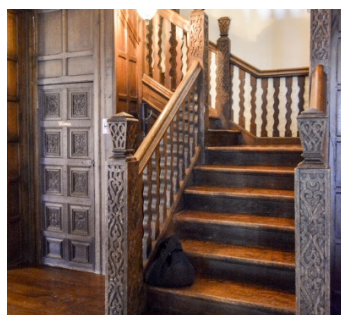
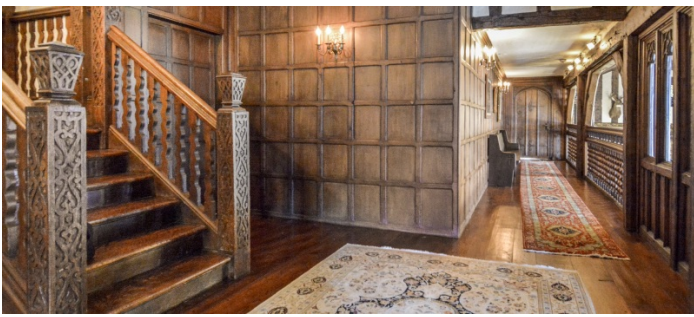


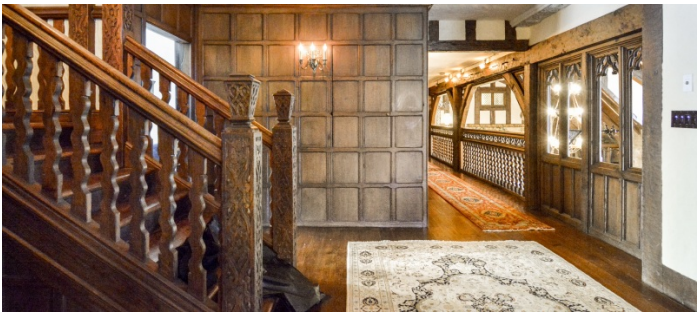












2ND FLOOR

