



## 8080 Long Island City, Queens

### 3RD FLOOR INTERIOR - VIEW FULL DETAILS BELOW

#### LOCATION

Long Island City, NY 11101

#### TAGS

Balcony, Bathroom, City View, Empty, Kitchen, Living Room, Modern Contemporary, Rooftop, Terrace Patio, White Spaces

#### SPECS

3rd Floor - 5000 sq ft

3rd Floor Terrace - 6000 sq ft

Penthouse - 2000 sq ft

Penthouse Rooftop - 3000 sq ft

#### POWER

400 Amp (3rd Fl) + 200 Amp (PH) three phase dedicated power

#### CATEGORIES

\* In the Zone, Event Space, Loft, Roof Top, Studio

#### Notes

7000 square feet of indoor and 9000 square feet of outdoor raw event space with an abundance of natural light and clean modern finishes. Panoramic views of the Manhattan skyline and the Queensboro Bridge. High ceilings and large open spaces make it ideal to host Events and Photo / Video Shoots. Two green rooms, central heat and air conditioning.

The venue can be rented in its entirety or by each individual floor.

3rd Floor - 5000 sq ft interior with 6000 sq ft terrace overlooking New York City. Maximum capacity of 300 for a seated dinner and dancing or 500 for a cocktail-style event. 400 Amp three phase power dedicated to this floor.

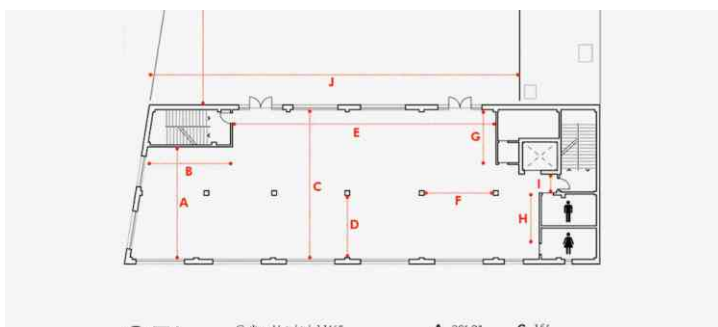
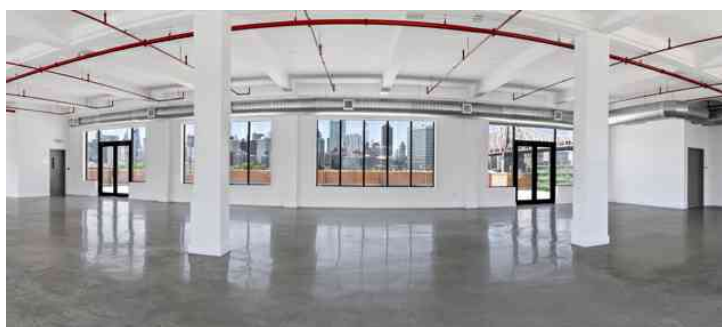
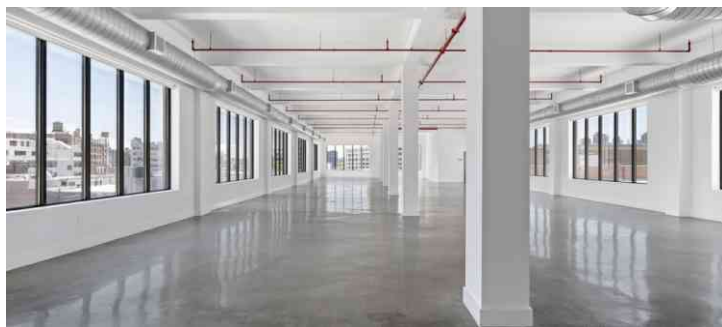
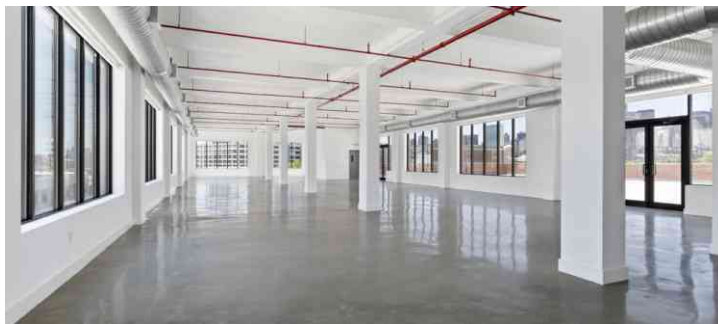
Penthouse - 2000 sq ft interior with 3000 sq ft rooftop terrace with panoramic city views. Maximum capacity of 75 for a seated dinner and dancing or 150 for a cocktail-style event. 200 Amp three phase power dedicated to this floor.

Amenities: Lobby, Large Coat Check in Lobby, 2 Dressing Rooms/Green Rooms, Prep Kitchen, Elevator, Wifi, Handicap Accessible Bathrooms, Large Windows Provide Natural Light, Powered Window Shades, Tables - 60" rounds and 8'x36" rectangular.

#### Restrictions:

We do have a list of recommended vendors, available upon request.

Have exclusive vendors for furniture rental and for tenting.



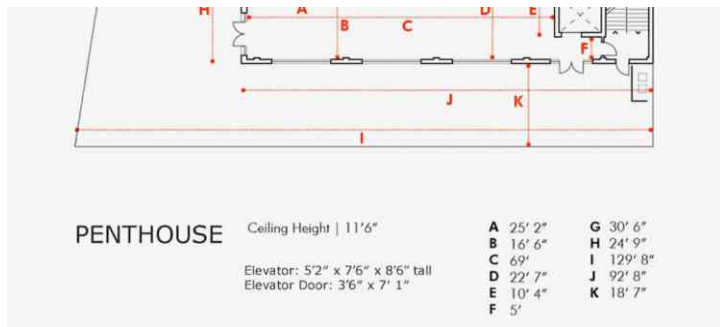
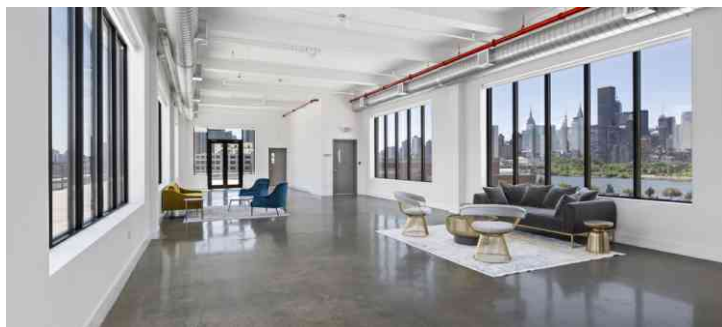


## 3RD FLOOR TERRACE





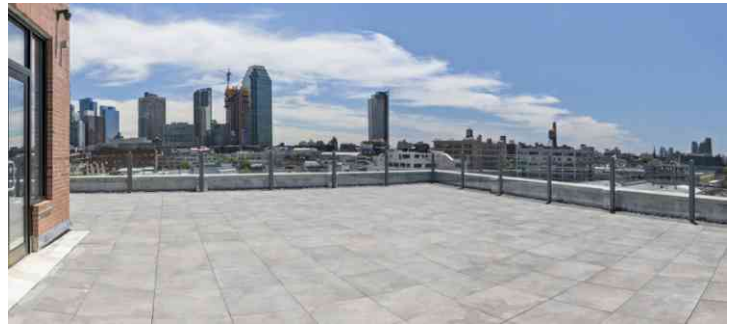
**PENTHOUSE INTERIOR**





## PENTHOUSE ROOFTOP TERRACE









**GREEN ROOMS / KITCHEN / BATHROOM / LOBBY**

