 LOCATION


West Cornwall, CT 06796

 DISTANCE FROM NYC


95 miles

 TAGS

Backyard Lawn, Bathroom, Bedroom, Billiard Table, Carpet, Classic Grand, Clawfoot Tub, Dock Pier, Exposed Beam, Fields, Fireplace, Garage, Garden, Jacuzzi, Kitchen, Lake or Pond, Library Room, Living Room, Ornate, Pool Outdoor, Porch, Sauna, Skylight, Stable, Staircase, Staircase Ext, Stone Wall, Terrace Patio, Traditional, Tudor, Wood Floor

 SPECS

8,800 sq ft
275 acres

 POWER

200 amps

 CATEGORIES

House, Mansion

Notes

“The Castle” mansion was built in 1921 by a wealthy heiress in an eclectic European style with 8 bedrooms across 3 floors and roughly 8,800 square feet. There are 3 ponds, 4 waterfalls, 2 stone and iron bridges; a small orchard, a Folly designed to look like an 1800’s stone ruin, which has one of 2 outdoor fireplaces.

Driving down the 1 mile long private road is like finding yourself in the Cotswolds. The property has numerous out-buildings, all with the same charming stone work done by the Italian stone masons, including:

Cottage - 975 square feet with 18’ high living room ceilings, a fireplace and skylights, with a pool and spa surrounded by walls.

Lodge - 1,800 square feet, built for the chauffeur with garages on the ground level and a 3 bedroom apartment above. Can be used for holding and/or catering.

Ruins - a burned down barn with just stone walls remaining.

4-Stall Stable, Groom’s House, Original Chicken Coop (used as a potting shed).

Gate House - 2,500 square feet Gate House.

Restrictions:

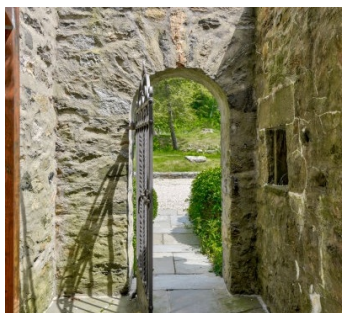
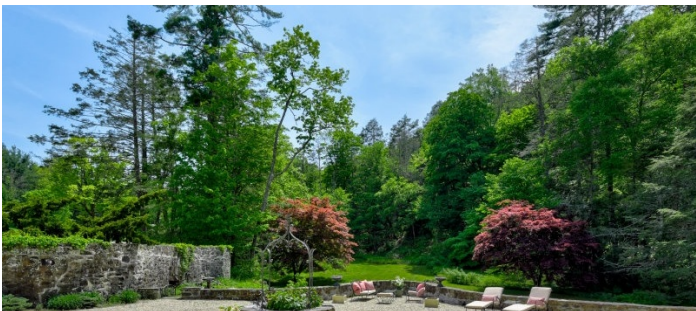
Pool and cottage pool house not available in summer months.

No painting of walls. Requests to nail walls must be discussed and approved in advance.

Pool is not heated.



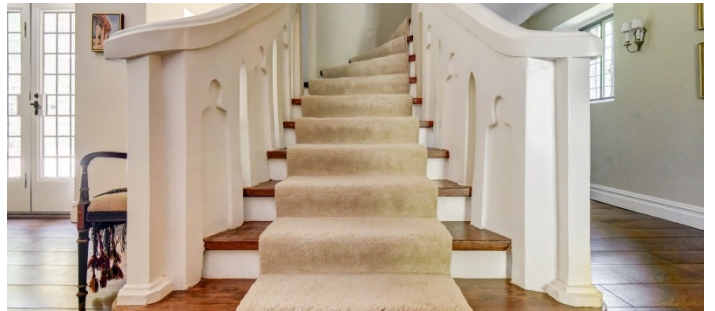
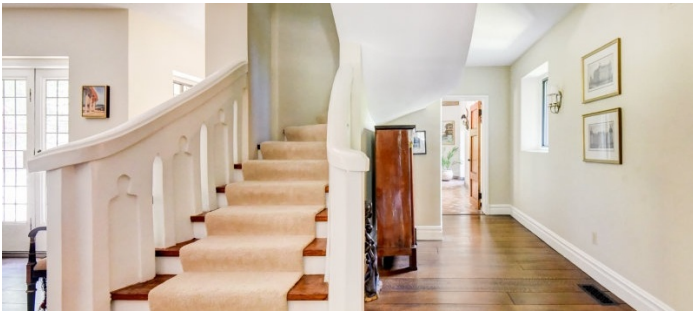








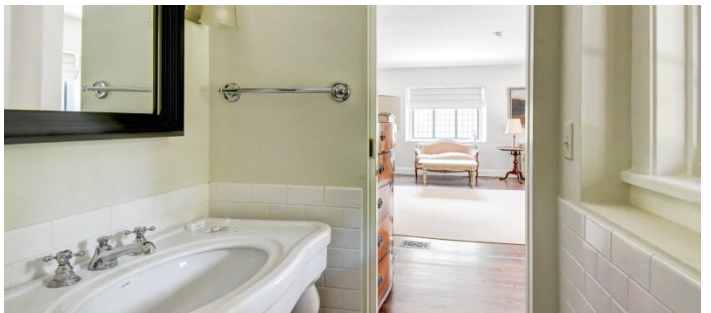
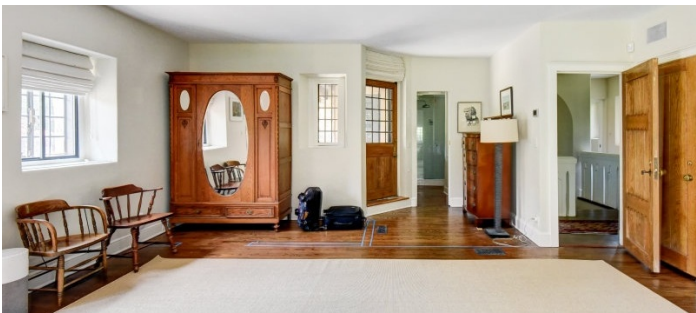


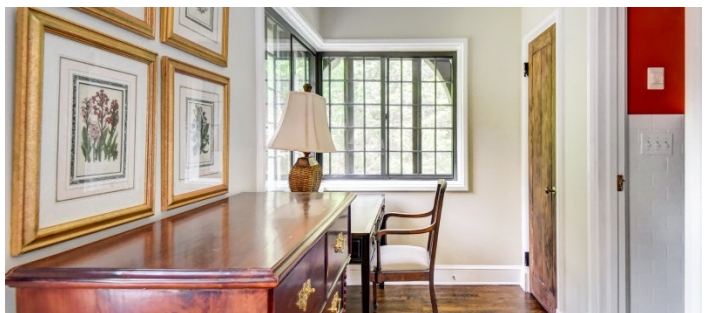
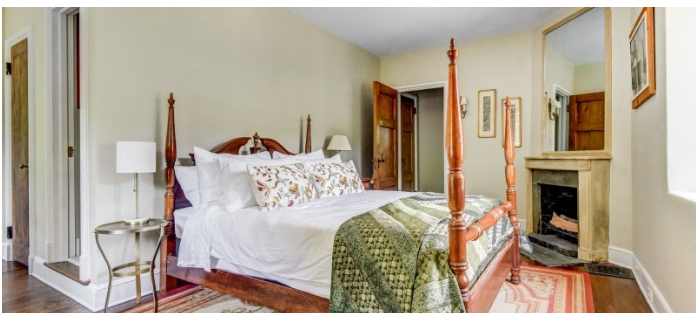
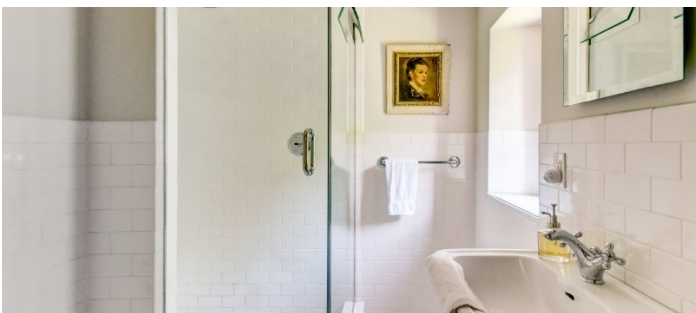
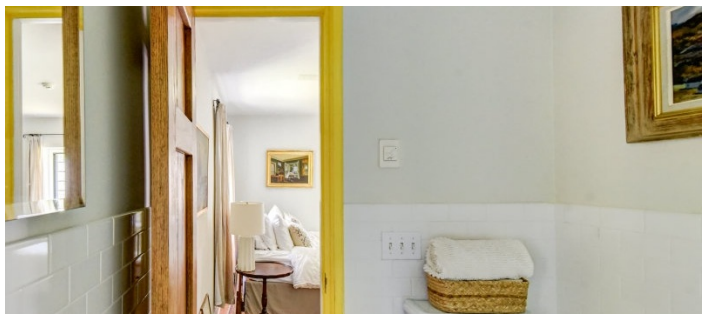


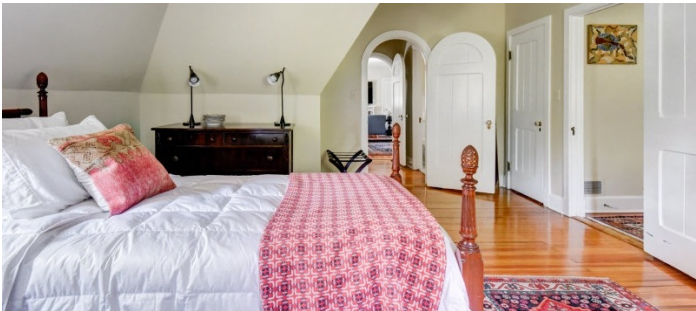


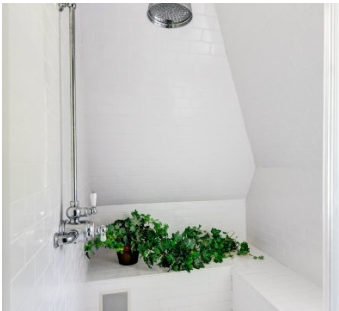
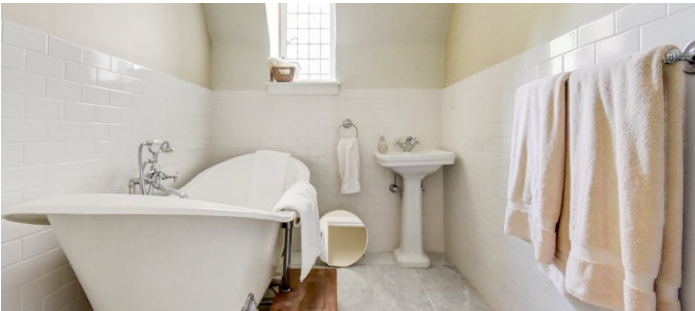












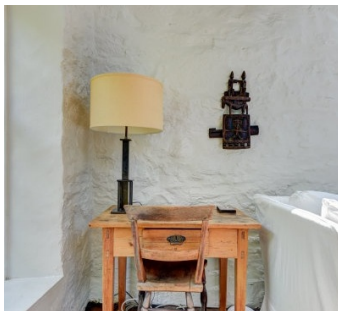


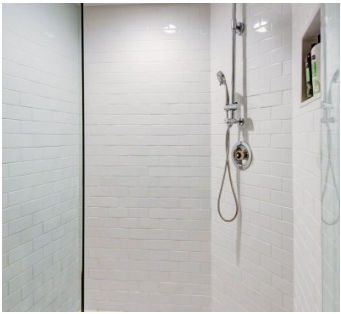
POOL COTTAGE - NOT AVAILABLE IN SUMMER MONTHS













STABLE, GROOM'S HOUSE, POTTING SHED









