



LOCATION

Wheatley Heights, NY 11798



SPECS

140 acres



DISTANCE FROM NYC

41 miles



POWER

Bring generator for power



TAGS

60's style, 70's style, Architectural, Bohemian, Exposed Beam, Fireplace, Modern Contemporary, Pool Outdoor, Porch, Rustic, Shingle, Skylight, Tennis Court, Woods



CATEGORIES

Artist Studio / Gallery, Event Space, Theatre Stage

Notes

Performing arts camp with 140 acres of woodlands, natural beauty and modern 60’s architecture.

Special features include: 902 seat open air outdoor Amphitheater with a large back stage area and ample parking for 500 cars, 2 very large pools, poolside changing area, piano and musical spaces, various open air studios, hiking trails, tennis courts. Various theatre spaces available: a Black Box Theater, a smaller Hillside outdoor theater, an off-broadway outdoor theater. Large open air recreational space for town halls and meetings.

There is a large recreational/chess room (air conditioned) that can be used for staging wardrobe, hair/makeup, etc. Restrooms are located throughout the beautiful campus.

Parking lot is approximately 40,000 square feet (fits about 500 cars).

Restrictions:

There is no heat and limited electricity currently available at this location.

Air conditioning is only available in the recreation/chess room and backstage spaces of the Amphitheatre.

Motorhome and generators are suggested.

No smoking allowed.









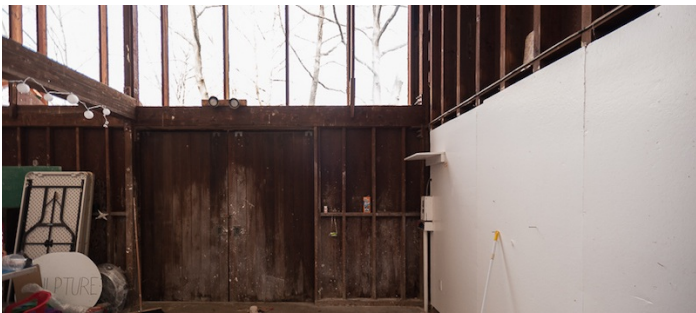








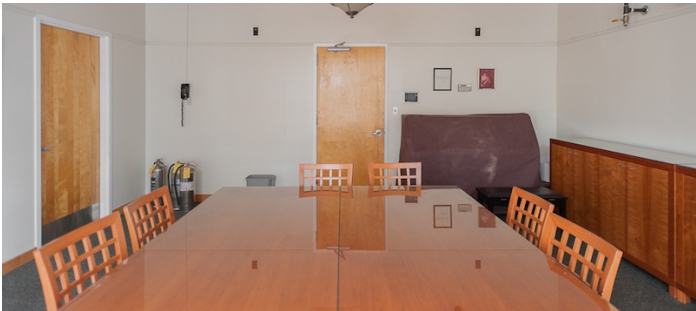
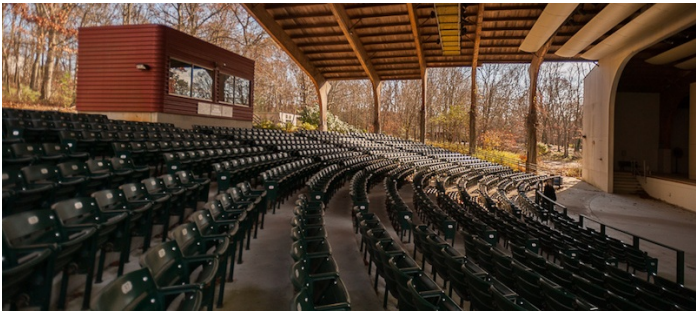






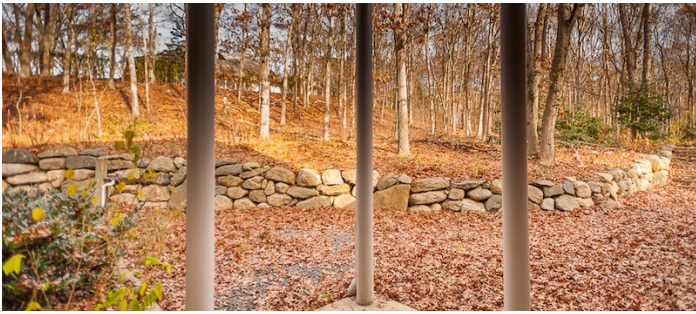
OPEN AIR AMPHITHEATER

































MULTI-PURPOSE STAGE AREA



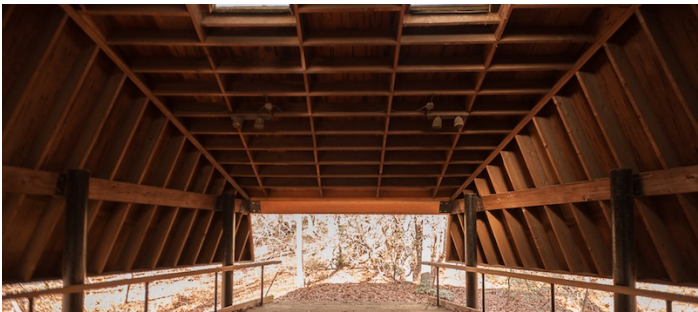














SMALL THEATER (BACKDROP SUBJECT TO CHANGE)

















RECREATION/CHESS ROOM (HAS HEAT AND AC)









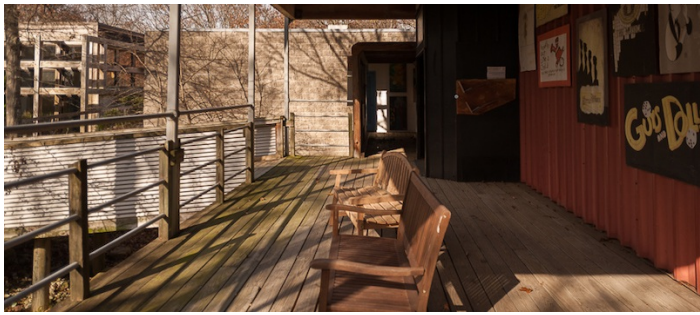












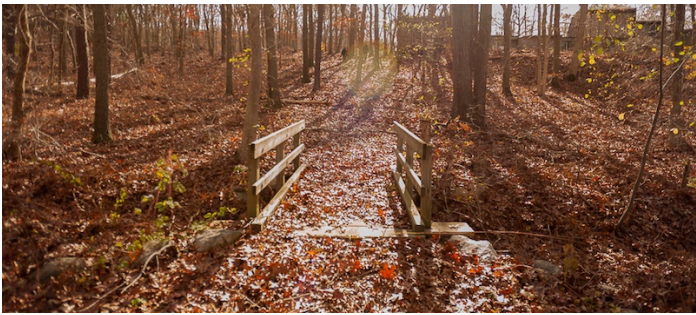
TENNIS COURT













POWER LINE ROAD







