


LOFT - VIEW FULL DETAILS BELOW

 LOCATION


New York, NY 10003

 TAGS

Bathroom, City View, Elevator, Empty, Exposed Brick, Kitchen, Living Room, Modern Contemporary, Rooftop, White Spaces

 SPECS

Square Footage: 4,800
Ceiling Height: 12'-13'
Dinner Capacity Loft: 40
Dinner Capacity Annex: 150
Cocktail Capacity Loft: 50
Cocktail Capacity Annex: 200

 CATEGORIES

* In the Zone, Event Space, Loft, Roof Top, Studio

Notes

The Loft (6th floor) - 1,200 square foot customizable space, elegantly furnished, with AV capability, on-premise bathroom, and prep area.

The Annex (6th floor) - 3,600 square foot loft with exposed brick, high ceilings and mezzanine loft.

Studio 1 (2nd floor) - 3,000 square foot loft with 15’ ceilings, exposed brick wall, and phenomenal daylight.

Studio 2 (2nd floor) - 2,000 square foot loft with 15’ ceilings, exposed brick wall, great daylight.

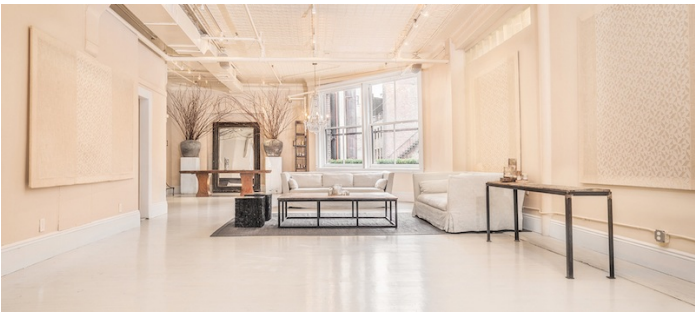
The Loft and The Annex can be combined (4,800 sq ft).

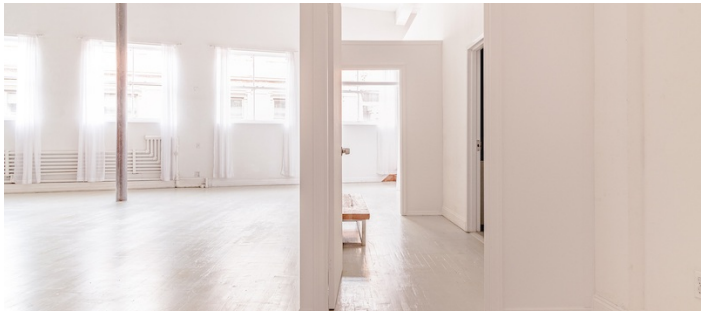
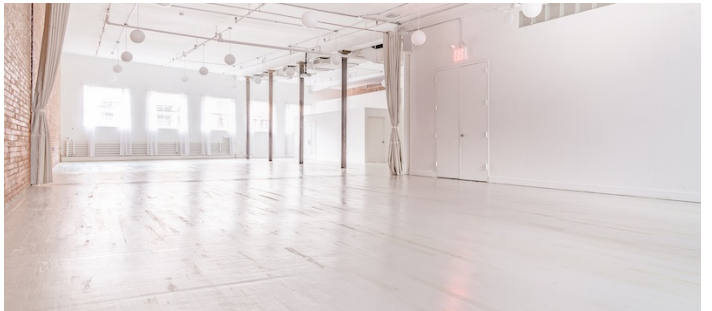
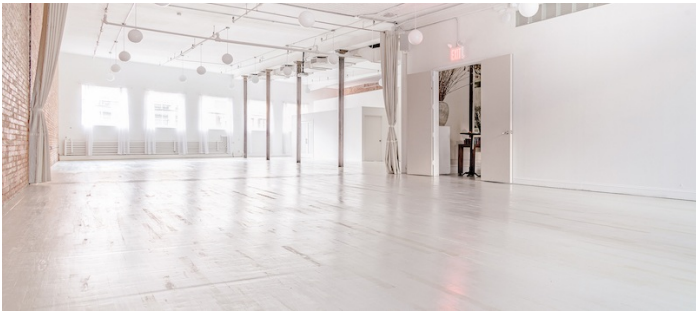
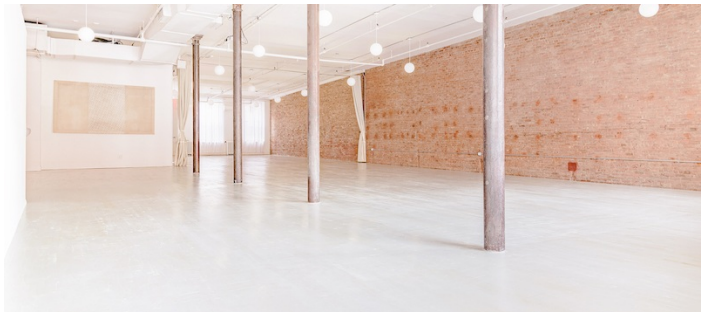
Studio 1 and 2 can be combined (5,000 sq ft); Amenities include sound system, wifi, AV equipment, in house furniture, and catering kitchen.

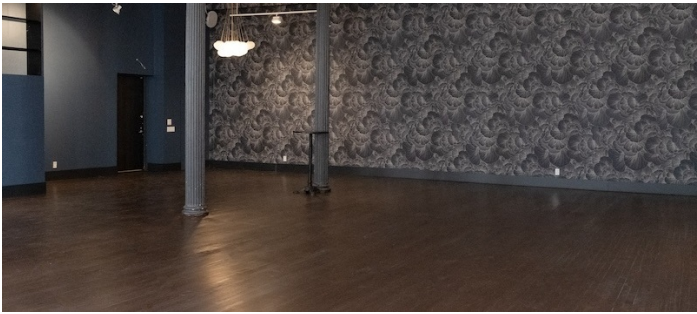
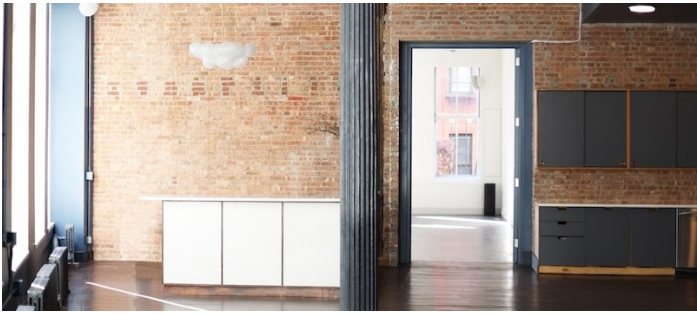
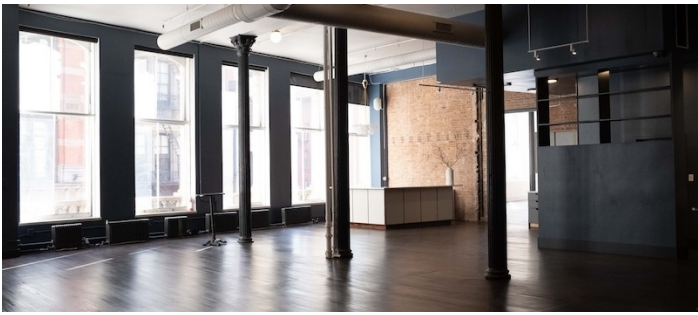
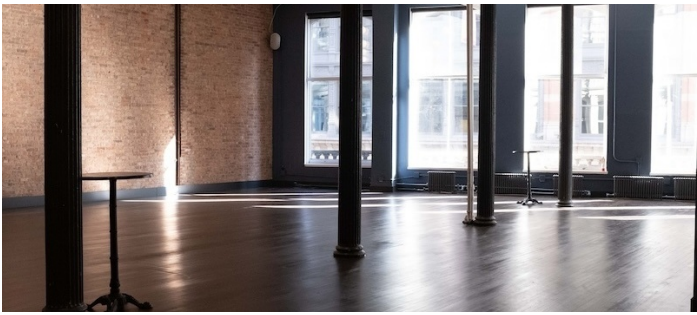
Rooftop - the roof of the building offers spectacular views of NYC skyline and Union Square. The roof is available for film and photo shoots only. The Annex and Loft are located immediately below and can be used for holding crew, talent and equipment.

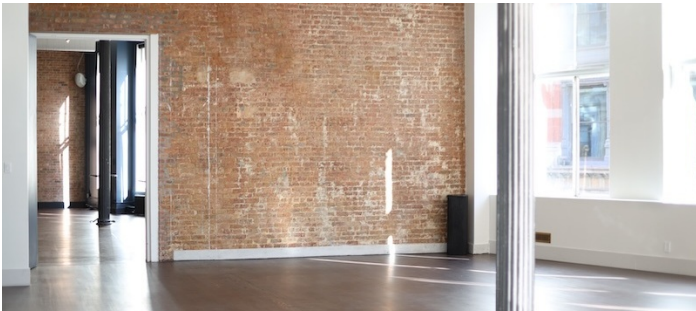
Restrictions:

No nailing into walls. Requests to paint walls must be approved in advance and walls returned to original condition.









GROUND FLOOR

