



 LOCATION


New York, NY 10013

 TAGS

Elevator, Empty, Kitchen, Modern Contemporary, White Spaces

 SPECS

Studio A: 2,500 sq ft
Studio B: 650 sq ft
Studio C: 2,000 sq ft
Studio D: 2,500 sq ft
12.5' ceiling height

 POWER

24,000 watts

 CATEGORIES

* In the Zone, Event Space, Studio

Notes

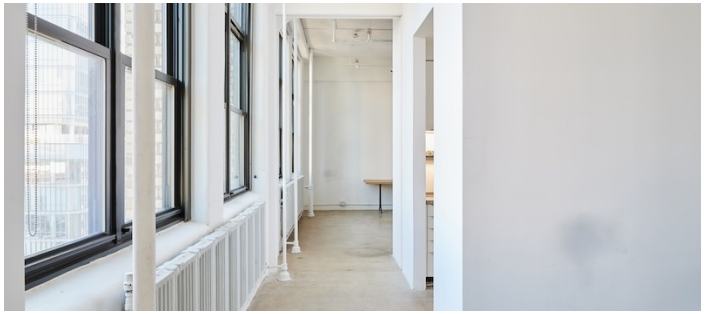
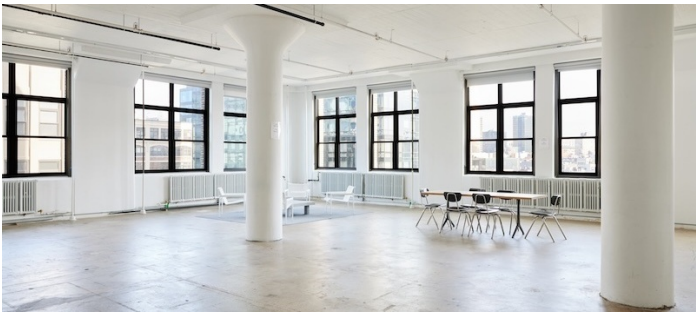
7,500

square feet of adaptable space across four studios (A, B, C, and D) located on the ninth floor of a production-friendly building in West Soho. The studios can be booked individually or together, making the space suitable for shoots, holding areas, showrooms, and events.

The space features 12.5’ ceilings, 24,000 watts of power, and ample natural light from North, East, and West exposures. It includes top-tier furniture, an extensive list of complimentary photoshoot equipment and production supplies, and is ADA-accessible.

Building amenities include an oversized freight elevator, a service elevator, a loading dock, and two passenger elevators—all of which have direct access to the space, making loading in/out a breeze.

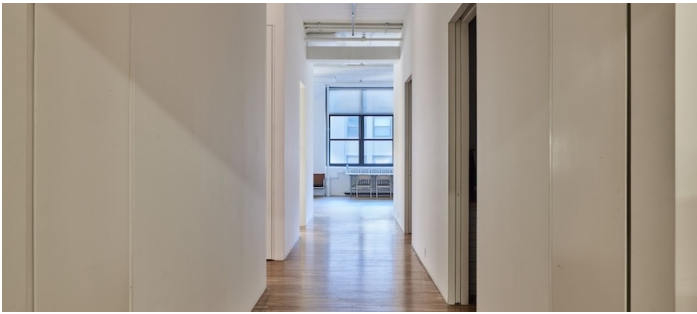
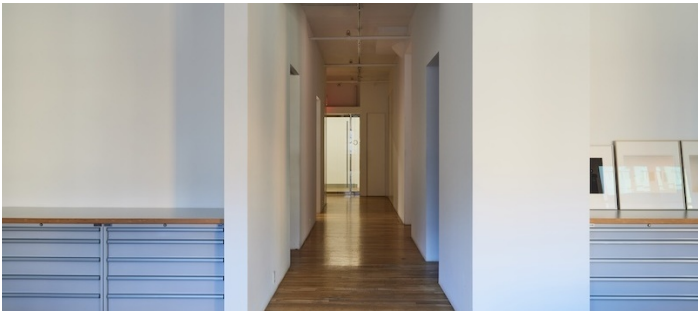
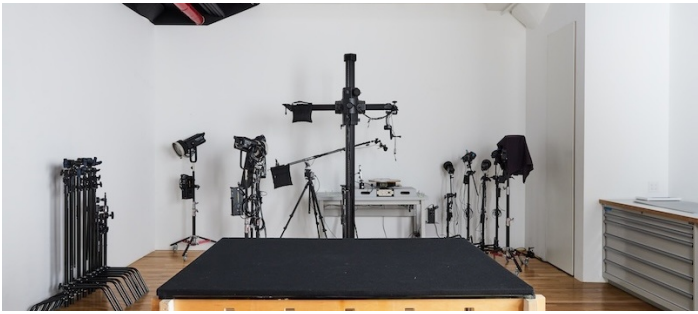
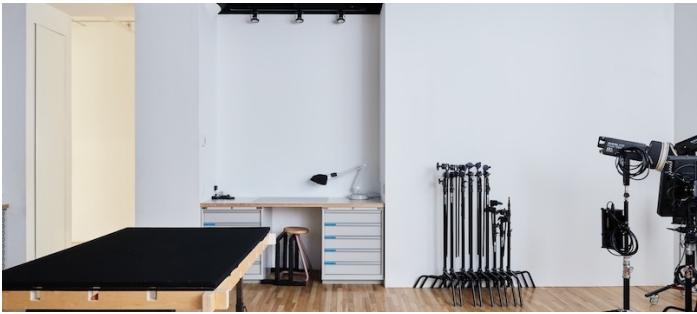
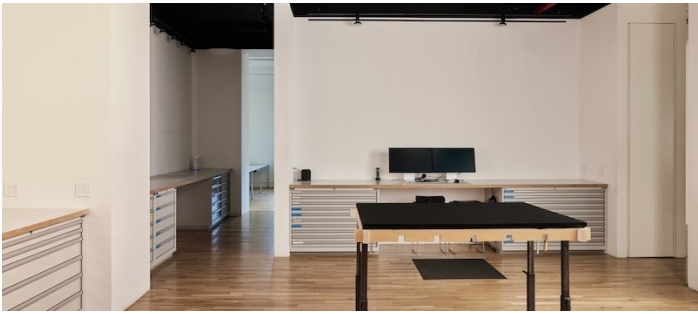
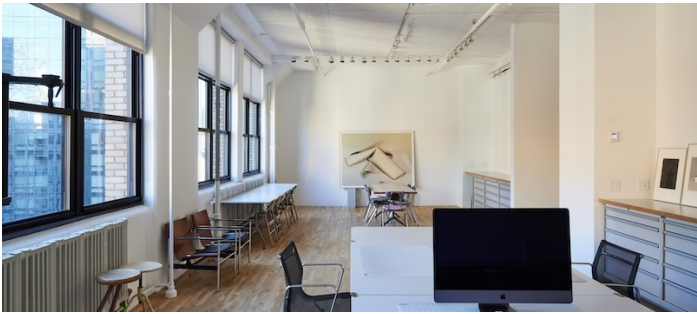
STUDIO A - 2,500 SQ FT



STUDIO B - 650 SQ FT



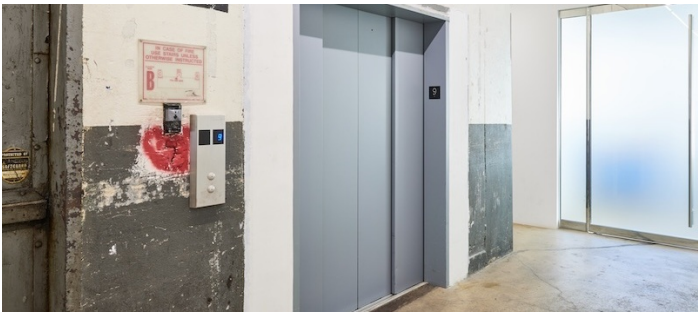
STUDIO C - 2,000 SQ FT



STUDIO D: 2,500 SQ FT







FLOORPLAN

