








<div><div> LOCATION</div><div>Bronx, NY 10454</div></div>	<div><div> SPECS</div><div>2,500 sq ft 12' ceiling height</div></div>
<div><div> GETTING THERE</div><div>138th Street & 3rd Ave station</div></div>	<div><div> POWER</div><div>200 amps</div></div>
<div><div> DISTANCE FROM NYC</div><div>10 miles</div></div>	<div><div> CATEGORIES</div><div>* In the Zone, Apartment, Brownstone, Townhouse</div></div>
<div><div><div> TAGS</div><div>Bathroom, Bedroom, Clawfoot Tub, Colorful, Eclectic Quirky, Fireplace, Kitchen, Library Room, Living Room, Modern Contemporary, Staircase, Traditional, Wood Floor</div></div></div>	

Notes

Three-story Victorian townhouse sits on a quiet block in Mott Haven, with high ceilings, historic original details, and sumptuous furnishings.

This historic townhouse was built in the 1890s and was lovingly restored. Featuring nine uniquely-styled rooms across three floors (Parlor Floor, Ground Floor, and Top Floor) the house offers an abundance of inspiring spaces.

Exterior features include a greenroof outside the Parlor windows and a ground floor patio that both allow for lighting options. There is a beautifully landscaped ground floor garden at the back of the house.

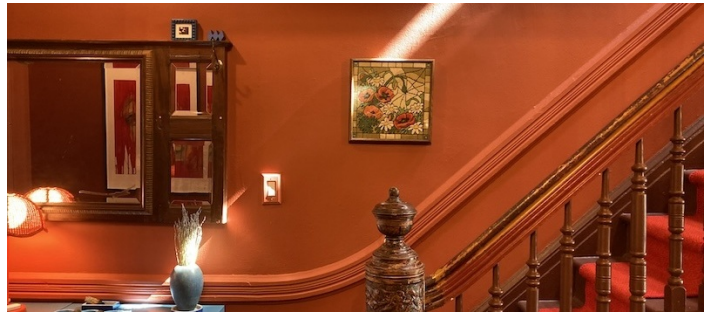
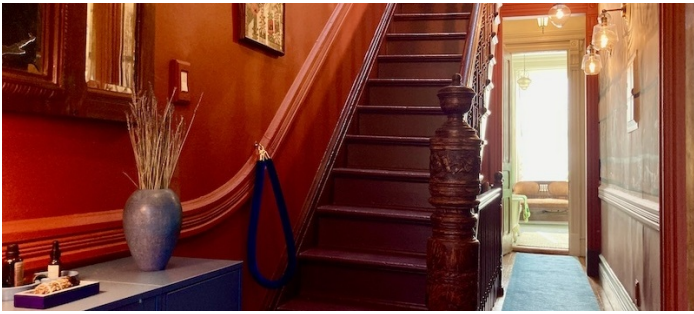
Areas of use must be determined in advance. Pricing varies according to floors used.

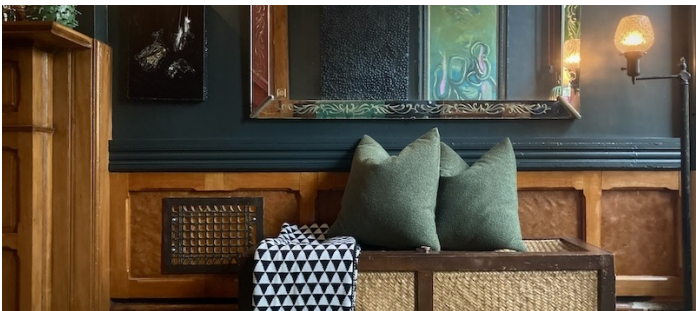
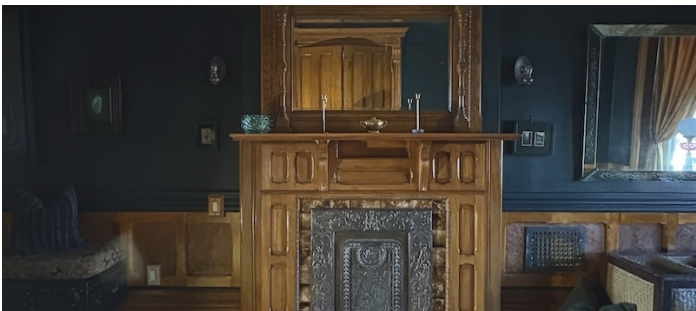
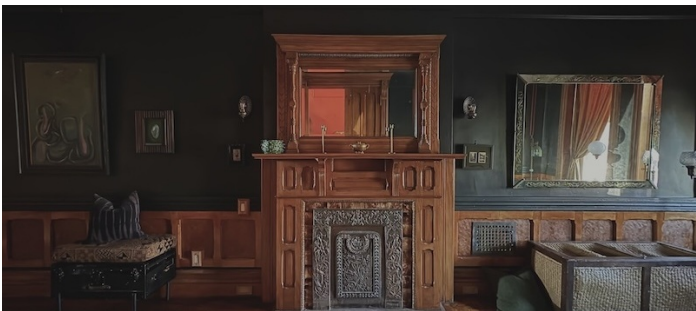
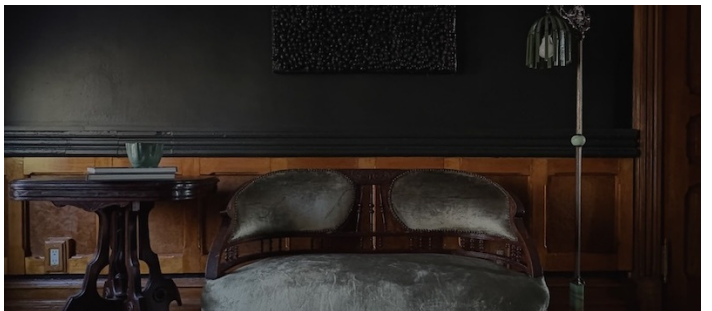
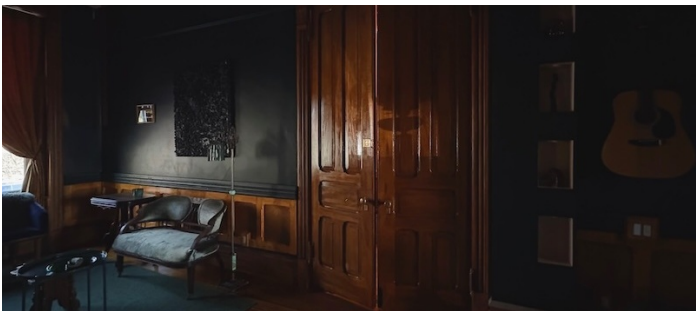
Restrictions:

30 people max allowed inside. No shooting outside of 7am-9pm.

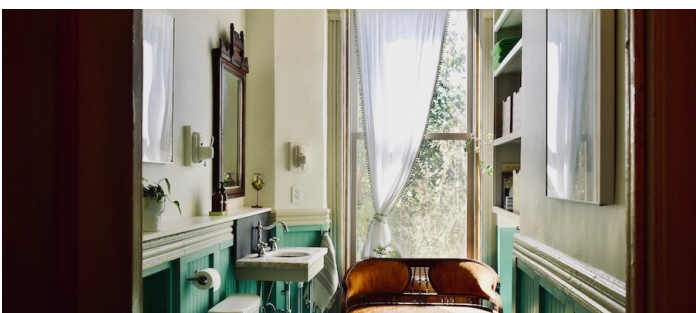
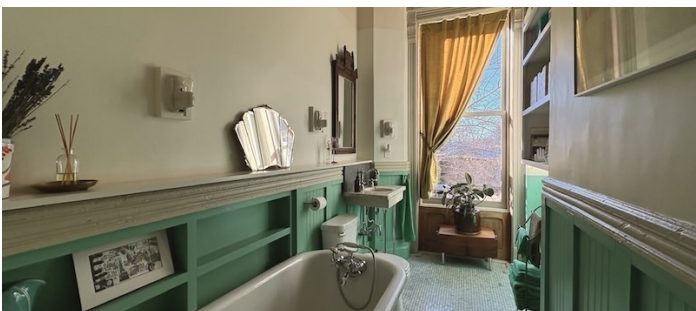
No painting or nailing into walls.

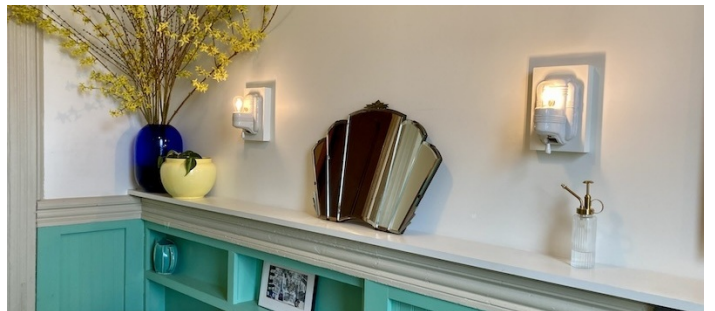
Requests to move artwork and/or furniture must be approved in advance.

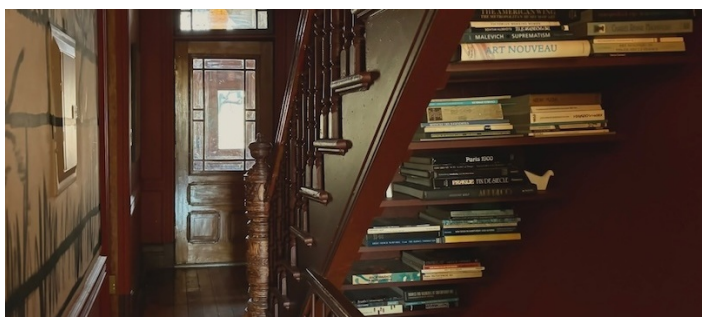
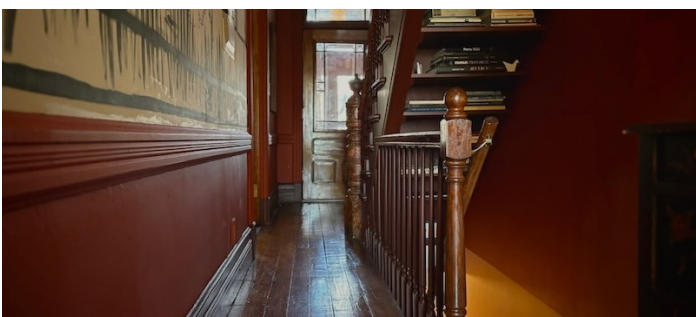






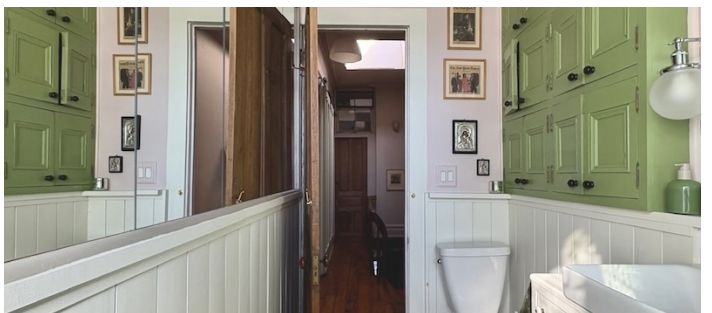
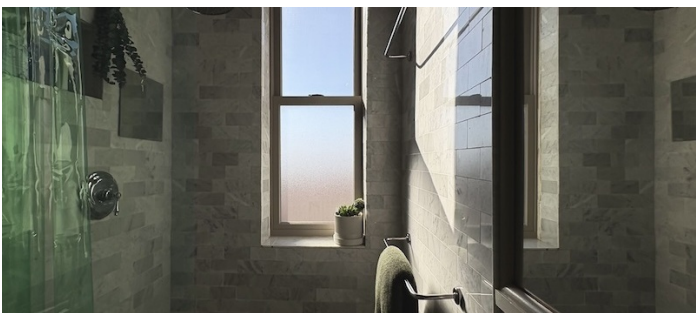
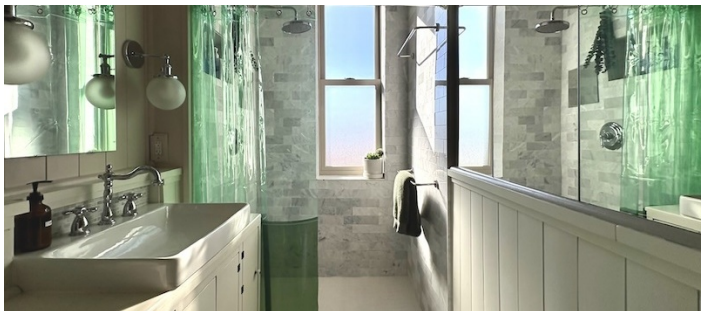
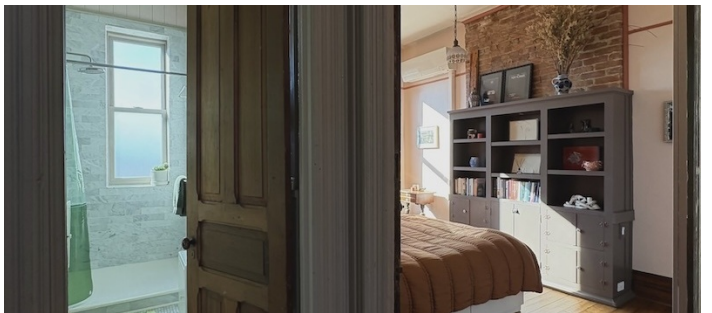


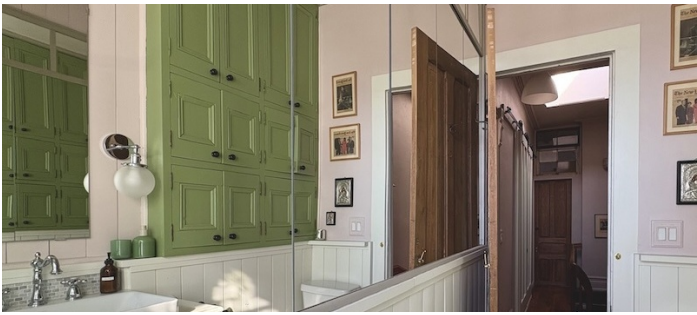


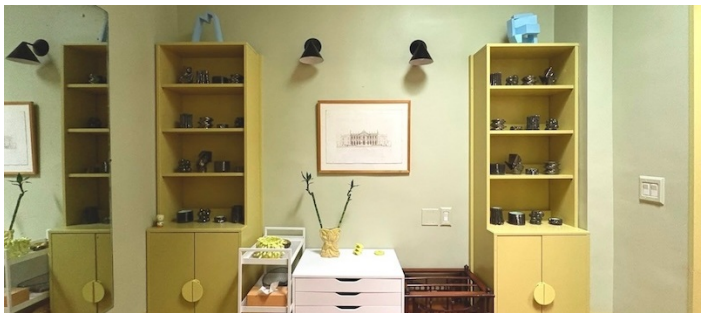
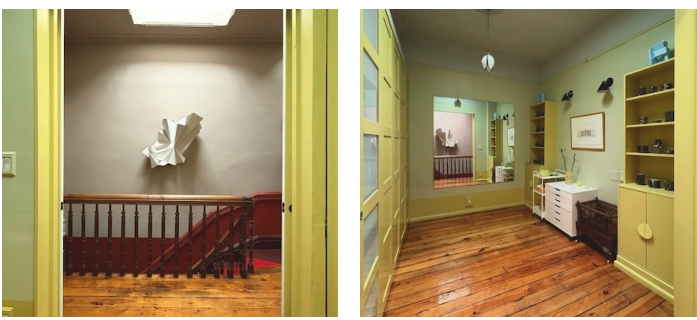


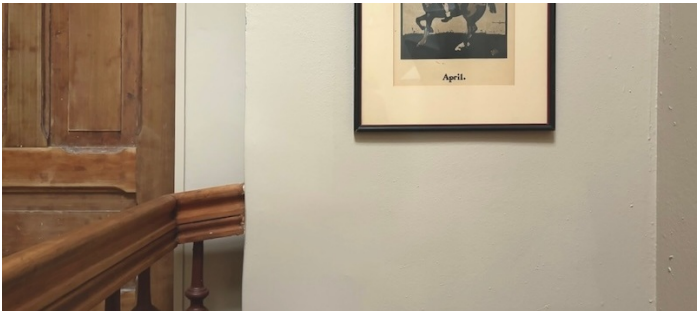
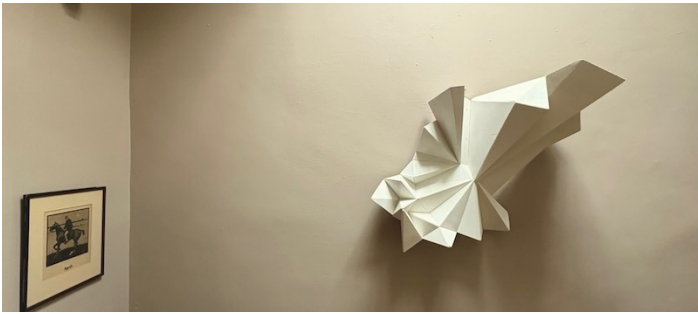


TOP FLOOR









EXTERIOR





