



2ND FLOOR - VIEW FULL DETAILS BELOW

 LOCATION

New York, NY 10002

 TAGS

Colorful, Graffiti, Modern Contemporary, Rooftop, Staircase, Staircase Ext, Terrace Patio

 SPECS

3,200 sq ft gallery
1,600 sq ft rooftop

 CATEGORIES

* In the Zone, Artist Studio / Gallery, Event Space, Roof Top

Notes

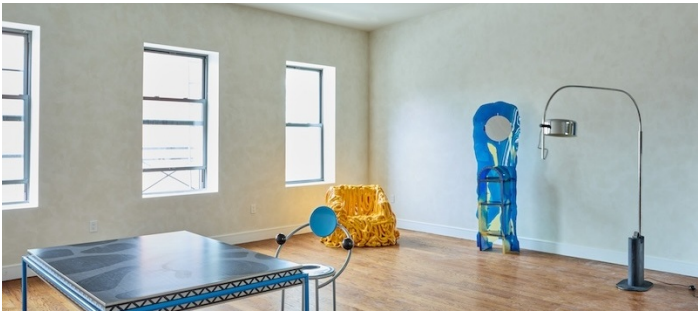
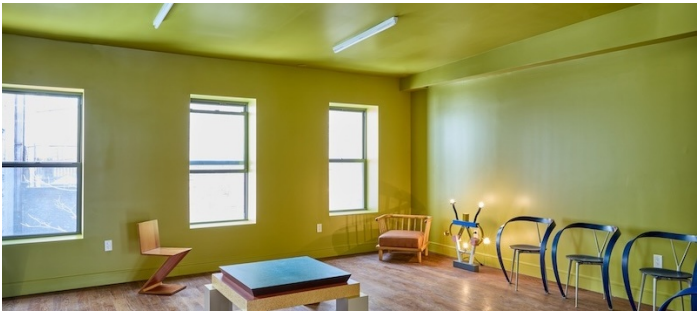
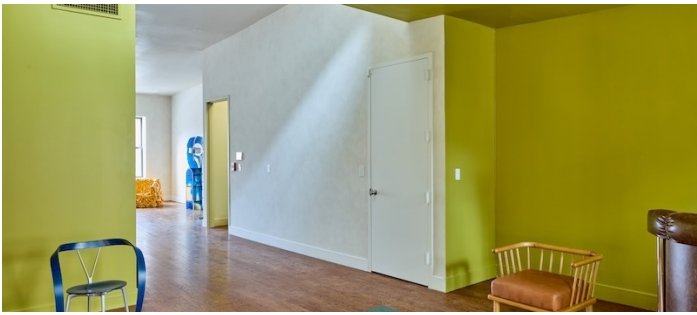
Located on the edge of Soho, this gallery is adorned with a curated selection of rare vintage furniture and unique oddities from around the world. Spread across two floors with an open layout, the space is bathed in warm lighting and offers an option for natural sunlight.

The gallery boasts 3,200 square feet of gallery space, 200 square feet for a patio on the first floor, and 1,600 square feet rooftop (accessible by stairs).

The furniture and vignettes are available for your use and can be rearranged throughout the gallery. Perfect for photoshoots and events.

Restrictions:

- No painting of walls.
- No elevator.



3RD FLOOR

