 LOCATION


New Canaan, CT 06840

 DISTANCE FROM NYC

48 miles

 TAGS

Backyard Lawn, Barn, Bathroom, Bedroom, Classic Grand, Colorful, Fence, Fireplace, Garage, Garden, Jacuzzi, Kitchen, Living Room, Pool Outdoor, Staircase, Sun Room, Terrace Patio, Traditional, Wallpaper, Wood Floor

 SPECS

7,000 sq ft
10' ceiling height
2.7 acres

 CATEGORIES

Barns, House

Notes

Elegant 1937 Georgian Revival New Canaan estate on almost 3 acres, blending timeless architecture with rich, layered interiors and manicured grounds. The dramatic, gravel-lined approach leads to an oversized, red brick parking court, where the ivy-covered brick façade and columned entryway are on full display.

The entrance leads into a grand circular foyer with a sweeping staircase and black-and-white marble floors. Interior spaces include a formal living room with blush-toned walls and antique portraiture, a bold lacquered green library, a vibrant yellow staircase hall, and a sun-drenched garden room with panoramic French doors and whimsical wallpaper.

The expansive grounds features vibrant gardens, formal stone terraces, lush lawns, mature plantings, and a striking pool area with brick walls. The stylish, fully outfitted pool house features navy-hued entertaining spaces, nautical décor, a fireplace, and French doors opening directly to the pool.

Decor throughout reflects a “Modern English” sensibility—polished yet playful—with original art, traditional furnishings, and custom textiles. The home is ideal for shoots requiring classic East Coast elegance with layered, high-style interiors and a range of both formal and relaxed vignettes.

Driveway fits about 15 cars.

Restrictions:

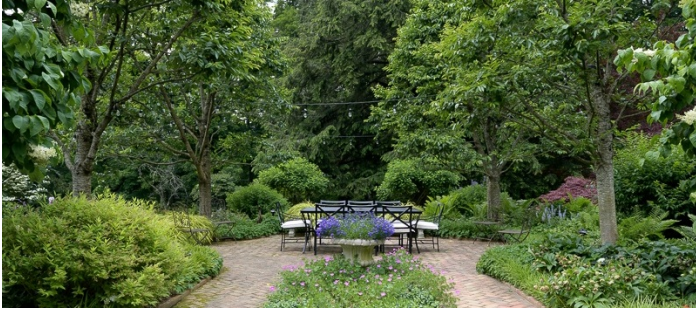
Floor protection and shoe covers requested.

No painting or nailing into walls.









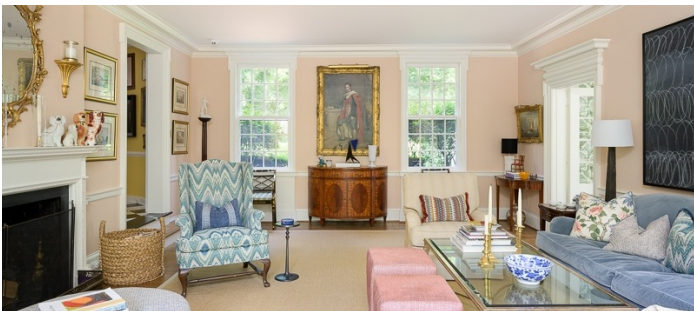
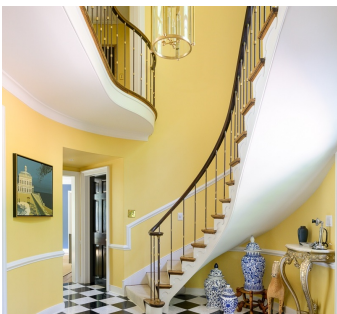








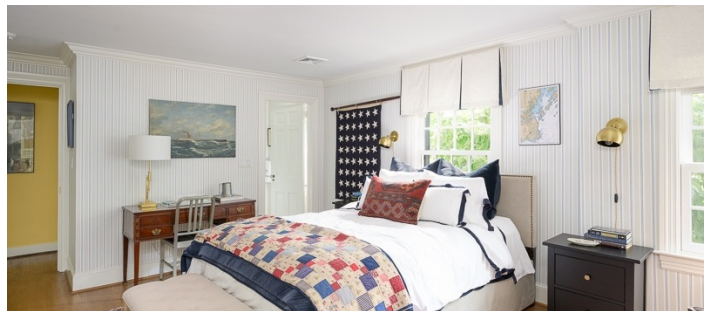
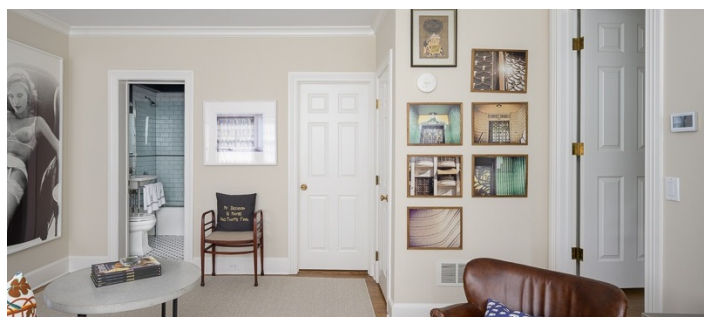


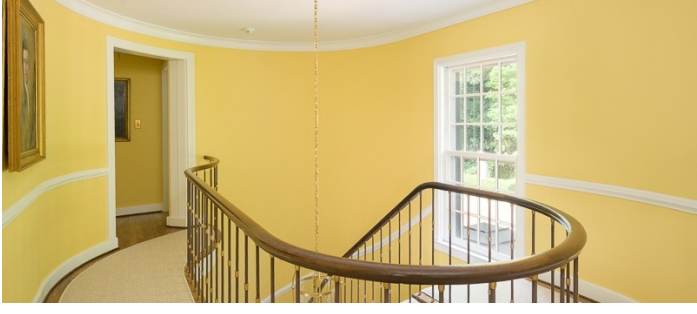


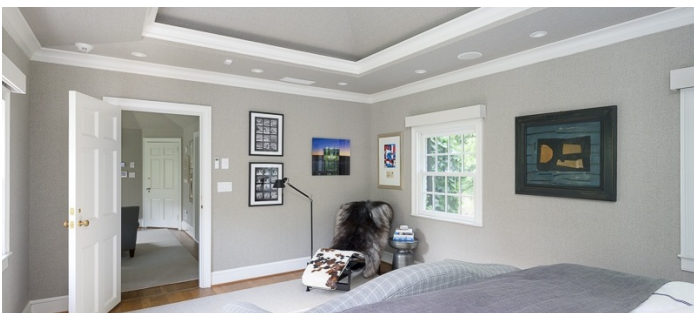
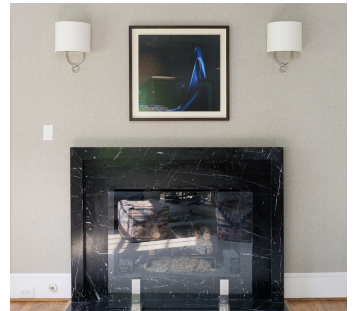
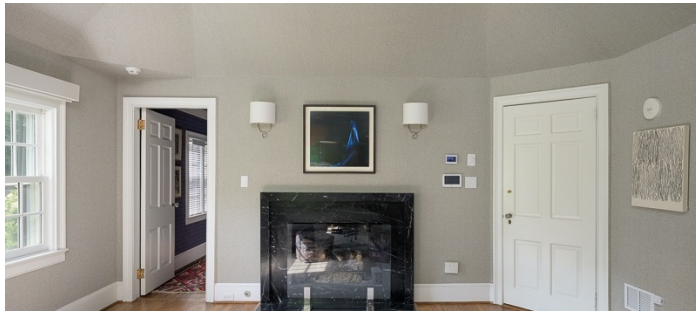




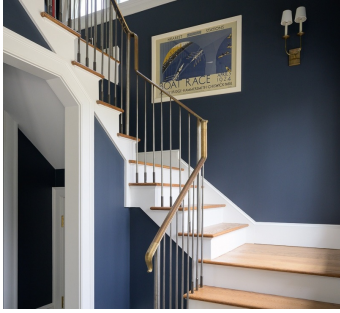
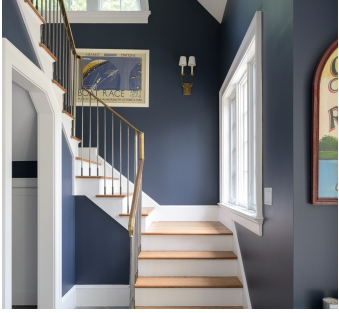














GARAGE

