

 LOCATION


Brooklyn, NY 11237

 SPECS

13,500 sq ft

 TAGS

Bathroom, City View, Distressed Patina, Exposed Beam, Exposed Brick, Graffiti, Raw Industrial, Rooftop, Traditional, Wood Floor

 CATEGORIES

* In the Zone, Event Space, Loft, Warehouse / Factory, Industrial

Notes

This warehouse space is a former sewing machine factory built in 1931. that encompasses approximately 13,500 square feet of interior space on two floors.

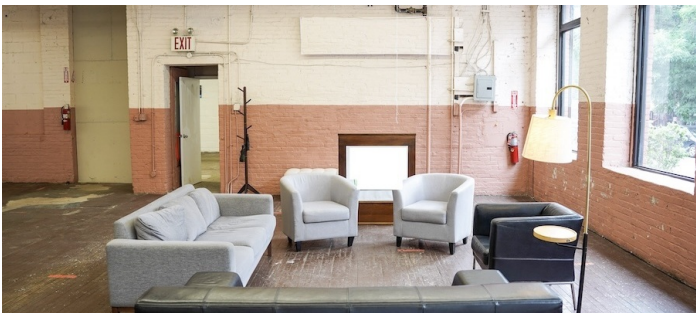
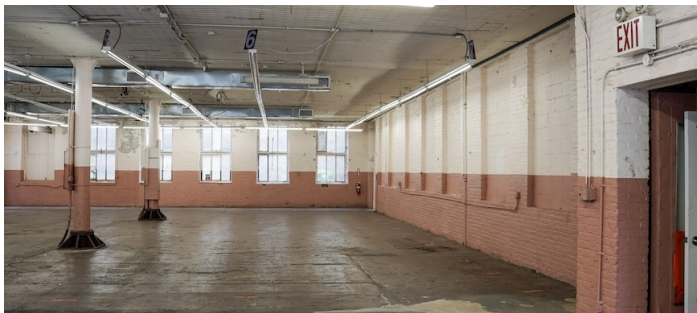
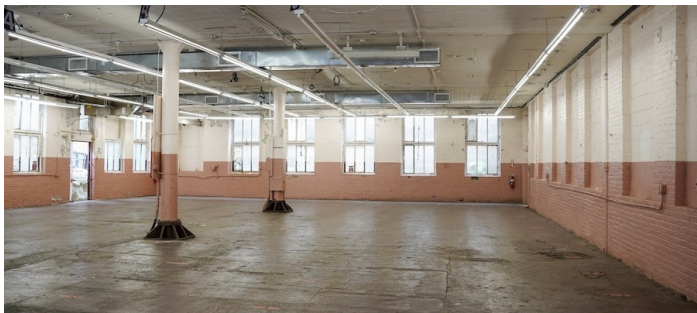
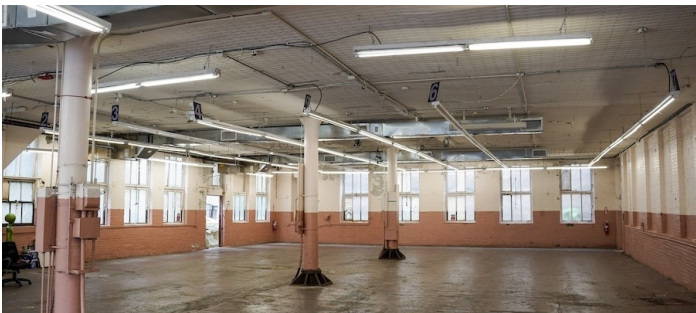
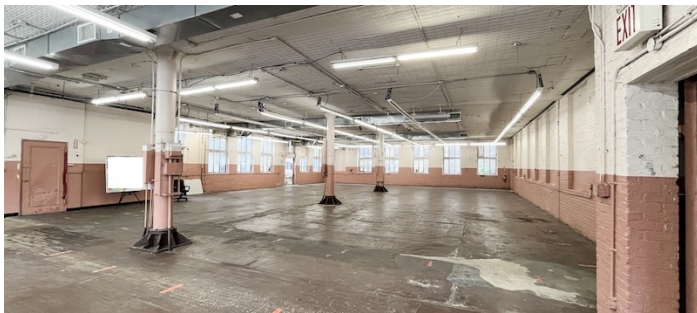
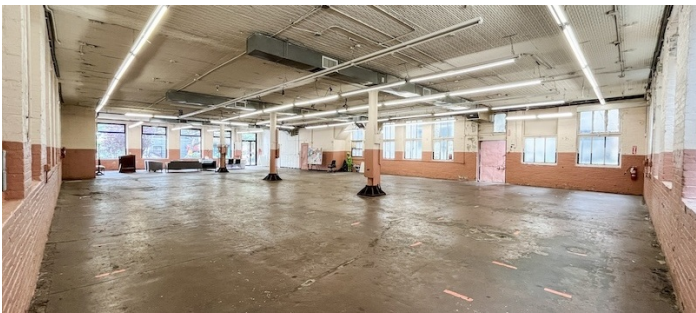
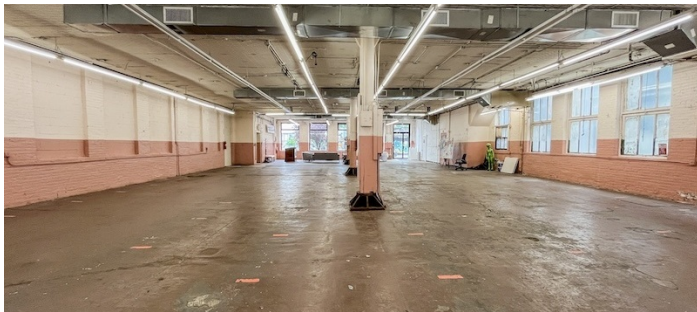
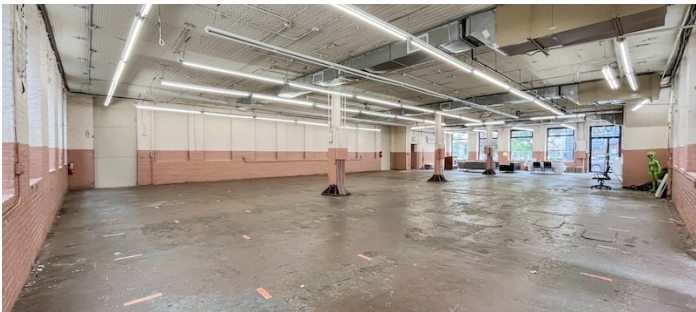
The 7,000 square foot ground level includes a large open space with 12’ ceiling height, large windows and a raw, industrial feel. The back opens to a small alley garden space.

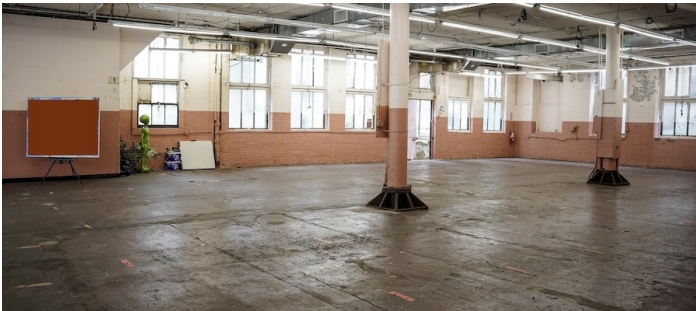
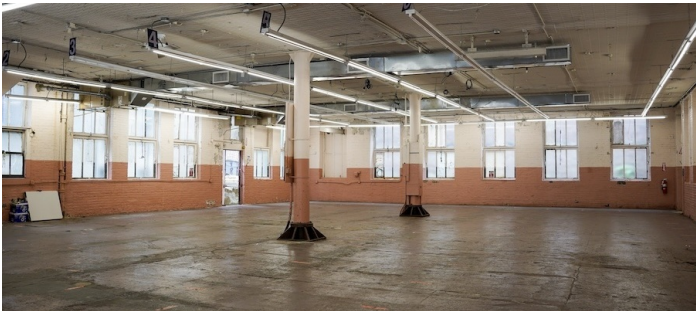
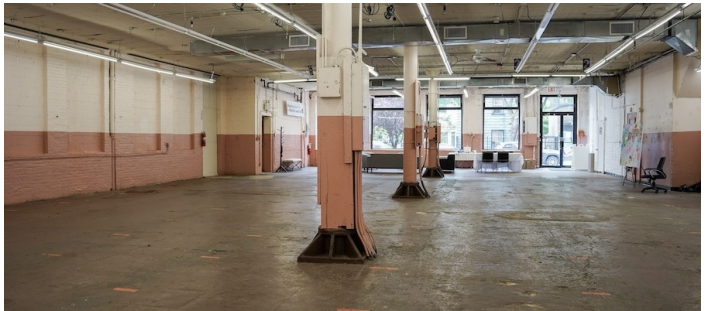
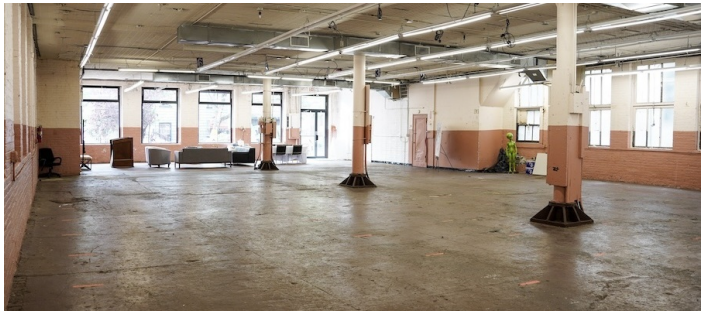
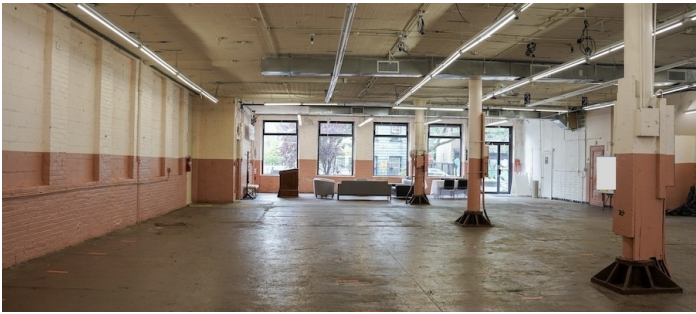
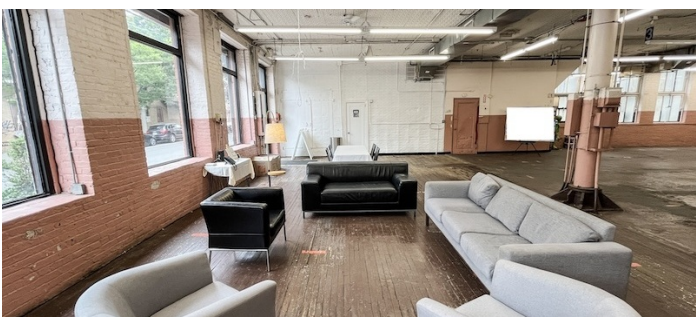
The second floor includes another 4,800 square foot open area with 10’6” ceilings.

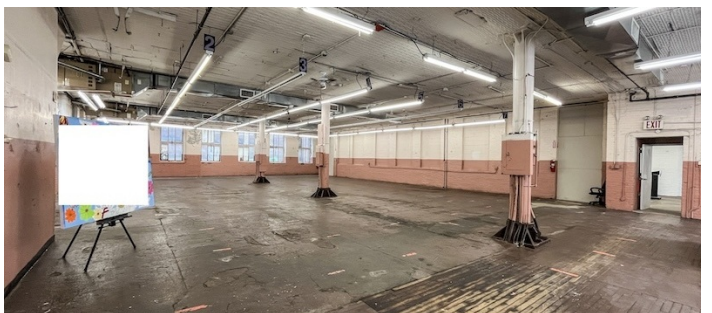
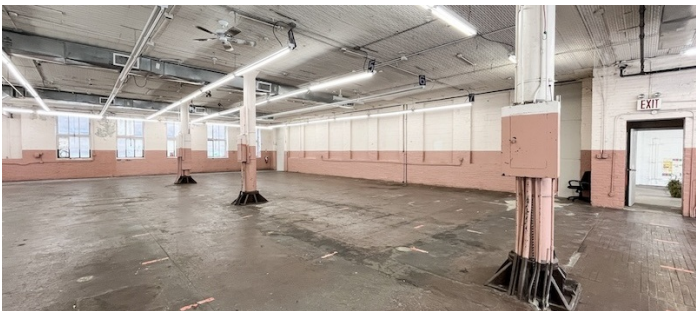
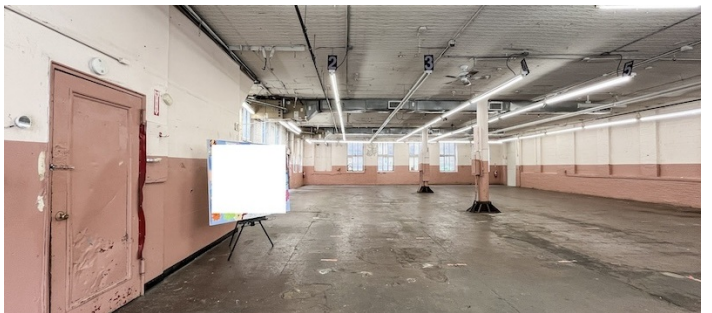
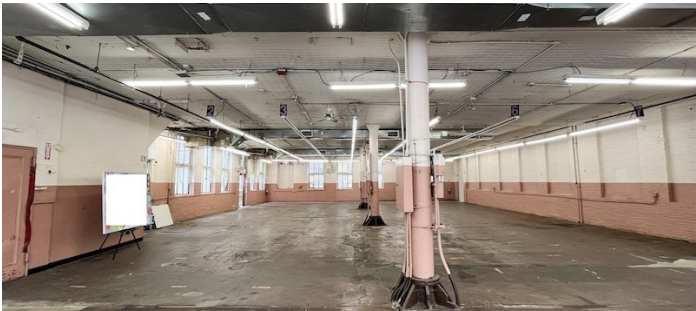
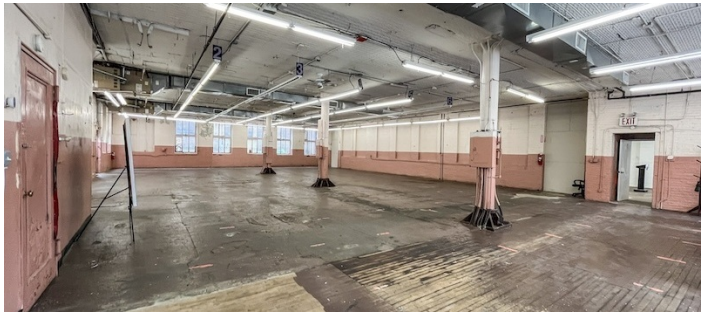
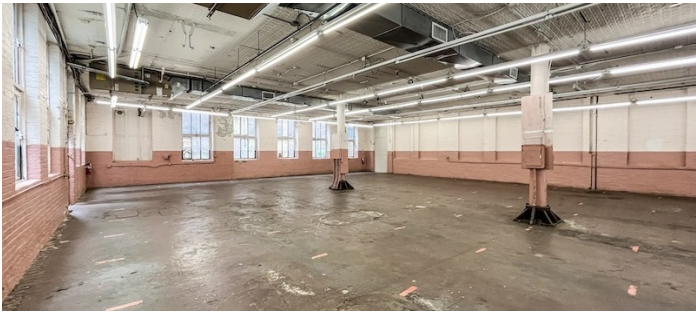
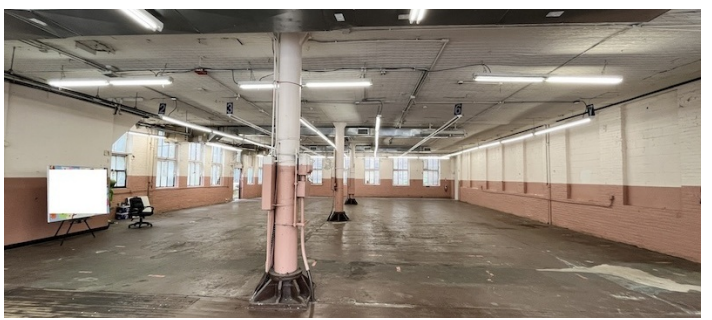
There is also a rooftop with city views.

Restrictions:

Requests to paint or nail into walls must be approved in advance; walls must be returned to original condition upon project completion.

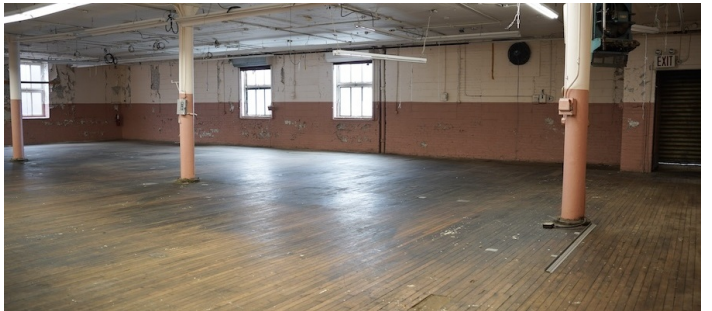
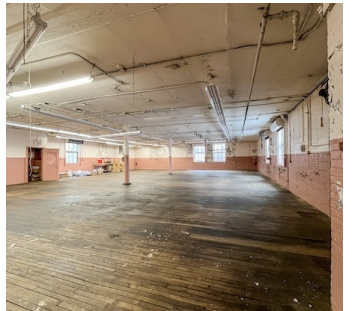
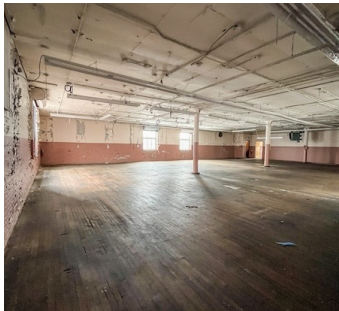
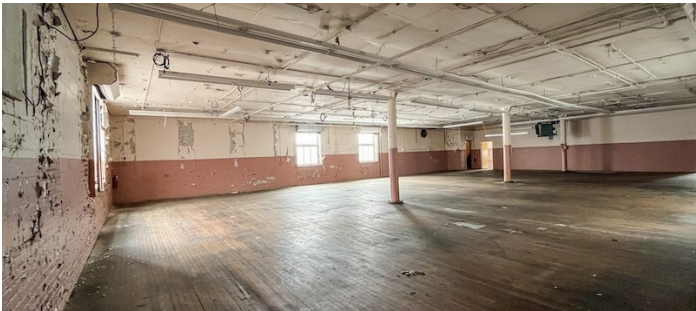
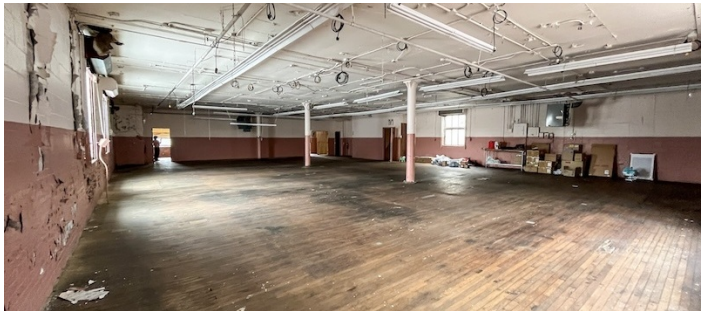
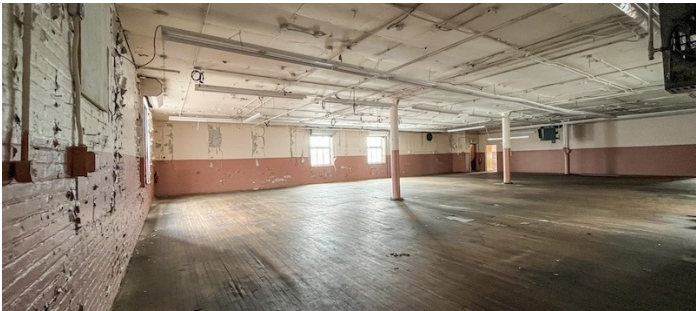
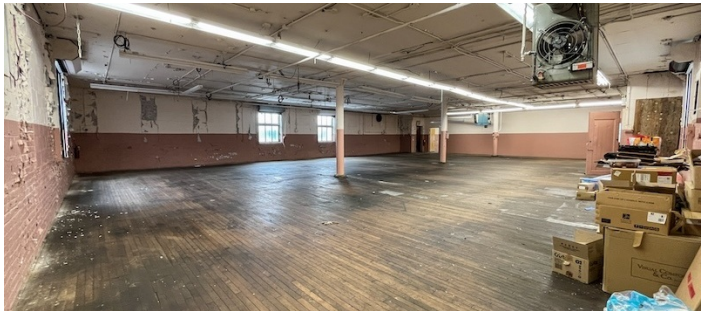
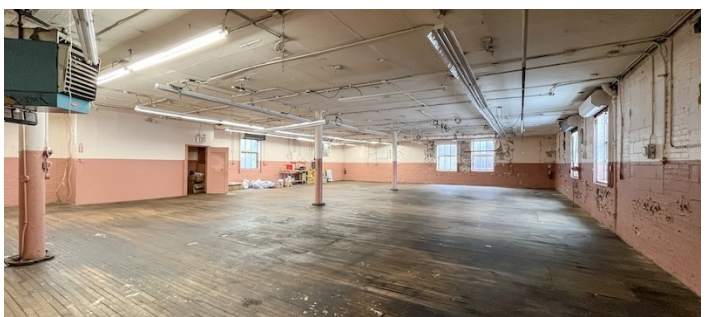
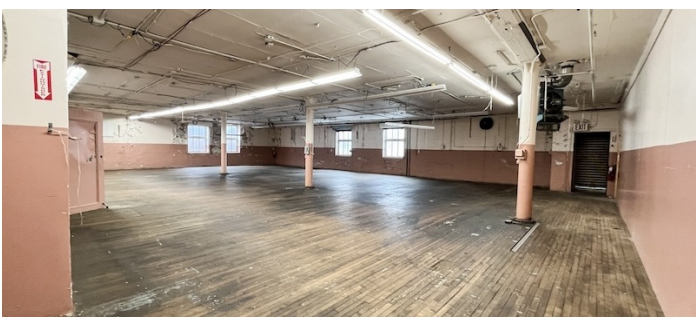


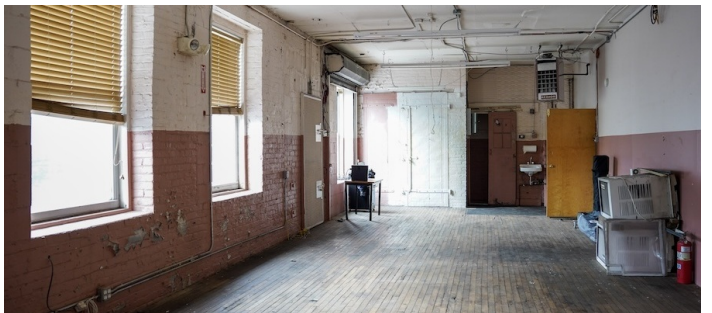
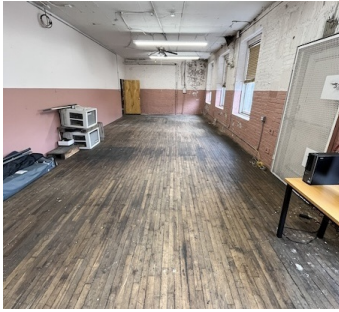
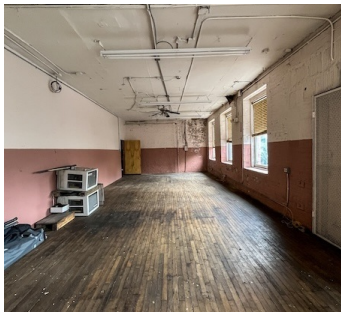
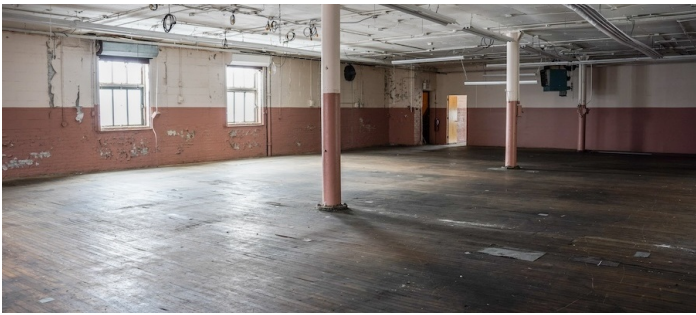






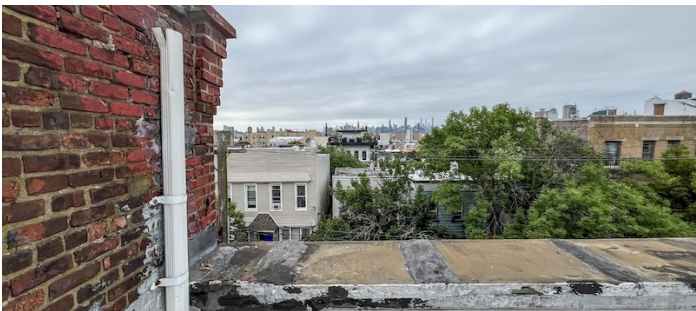
2ND FLOOR (NO ELEVATOR)





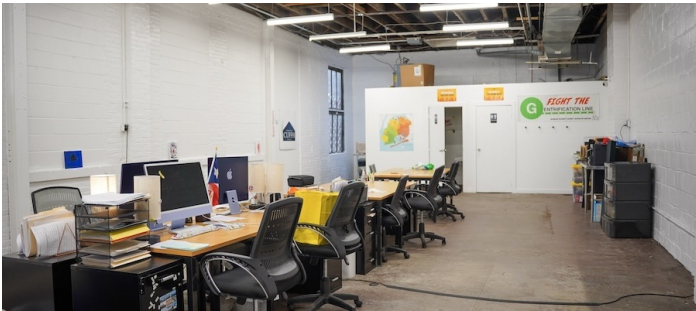
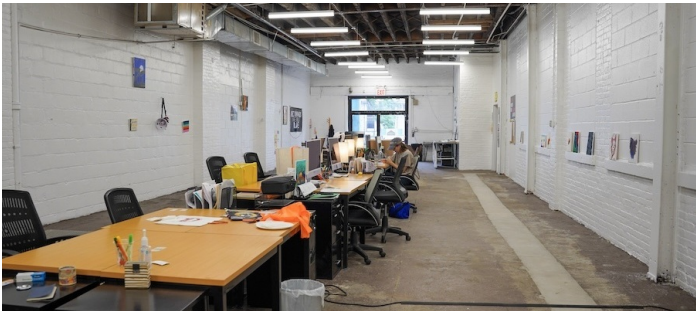
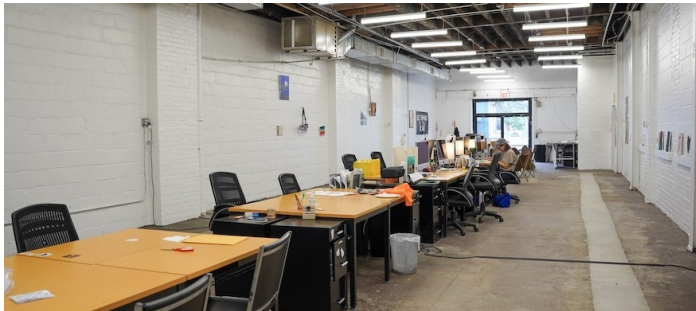
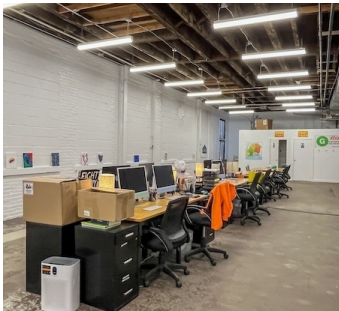
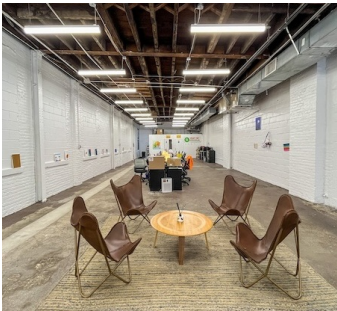
ROOFTOP (NO ELEVATOR)











EXTERIOR

