

<div><div></div><div>LOCATION</div></div> <div>Pawling, NY 12564</div>	<div><div></div><div>SPECS</div></div> <div>2,500 sq ft</div> <div>7.5 acres</div>
<div><div></div><div>DISTANCE FROM NYC</div></div> <div>67 miles</div>	<div><div></div><div>POWER</div></div> <div>200A; primary fuse box in basement, secondary pane in the garage</div>
<div><div></div><div>TAGS</div></div> <div>60's style, Backyard Lawn, Bar, Basketball, Bathroom, Bedroom, Colorful, Eclectic Quirky, Exposed Beam, Fence, Fireplace, Garage, Kids Room, Kitchen, Lake or Pond, Library Room, Living Room, Mid-Century, Modern Contemporary, Pool Outdoor, Porch, Rustic, Staircase, Sun Room, Tennis Court, Terrace Patio, Wallpaper, Wood Floor, Woods</div>	<div><div></div><div>CATEGORIES</div></div> <div>House</div>

Notes

Colorful, renovated Mid-Century home on 7+ acres with pool, and tennis court.

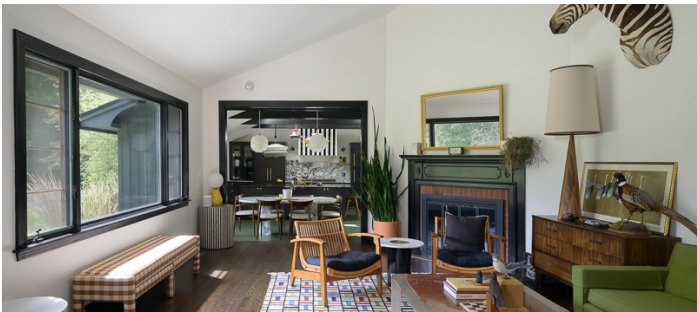
This is a single family home on 7.5 acres in the Hudson Valley. Originally built in 1958, the home has been renovated over the last few years to add in modern conveniences while maintaining the original character of the home and the interiors of the time including colorful tile bathrooms, vintage furniture, and wood paneled basement.

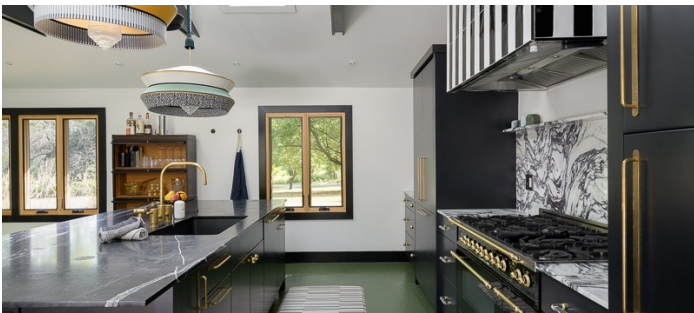
The home has a semi-detached garage (w/ 240V outlet) and the property features an expansive lawn, pool, tennis court, pond, raised bed garden, and concrete cold-war era bunker.

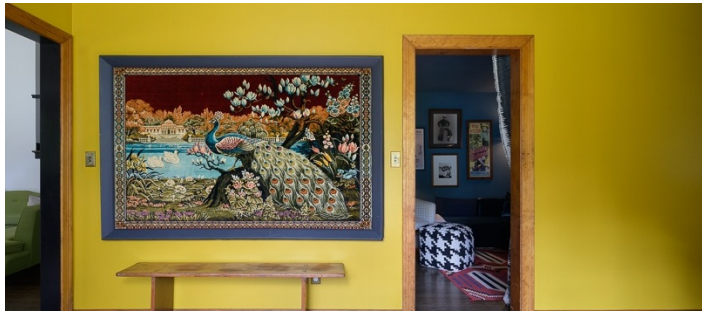
Restrictions:

No painting or nailing into walls.

Prefer no shoes inside - please protect floor and bring shoe covers.

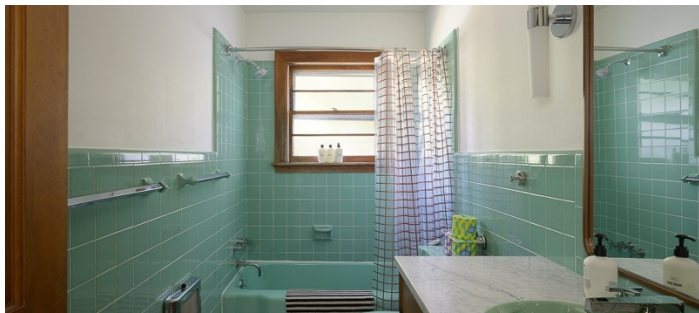


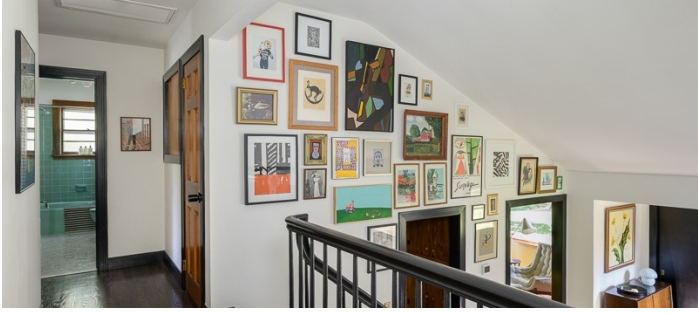






INTERIOR - 2ND FLOOR







EXTERIOR









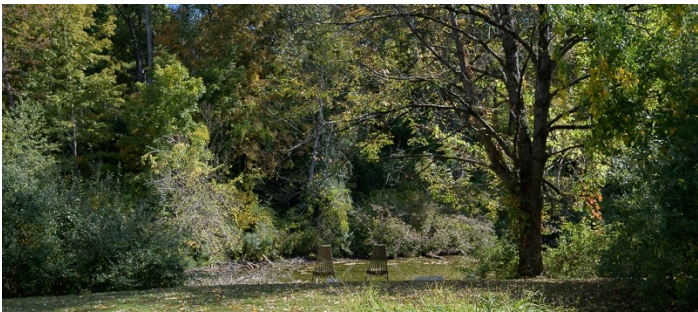


TENNIS COURT WITH BASKETBALL





POND



GARAGE

