 LOCATION


Westfield, NJ 07090

 DISTANCE FROM NYC

27 miles

 TAGS

Backyard Lawn, Bar, Bathroom, Bedroom, Billiard Table, Colorful, Fireplace, Kitchen, Living Room, Modern Contemporary, Pool Outdoor, Staircase, Suburban, Traditional, Walk-in Closet, White Spaces, Wood Floor

 SPECS

4,700 sq ft
9' ceiling height
1 acre

 CATEGORIES

* In the Zone, House

Notes

A Colonial-style home in the heart of Westfield, NJ, tucked at the end of a quiet cul-de-sac. This spacious 5-bedroom, 4-bath residence offers an ideal blend of privacy, scale, and convenience—set on over an acre of land.

Inside, the home is designed for everyday living and effortless entertaining, featuring an open, light-filled layout with generous living spaces and excellent flow. The large, modern kitchen showcases contemporary finishes and a spacious dine-in layout anchored by an oversized island.

Garage can be used to stage catering, hair/mu, wardrobe, etc.

Driveway fits about 10 cars.

Restrictions:

Requests to paint or nail into walls must be approved in advance; if approved, walls must be returned to original condition upon shoot completion.

Floor protection requested.

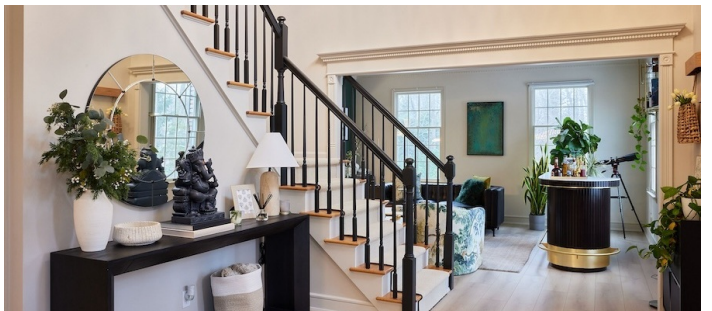
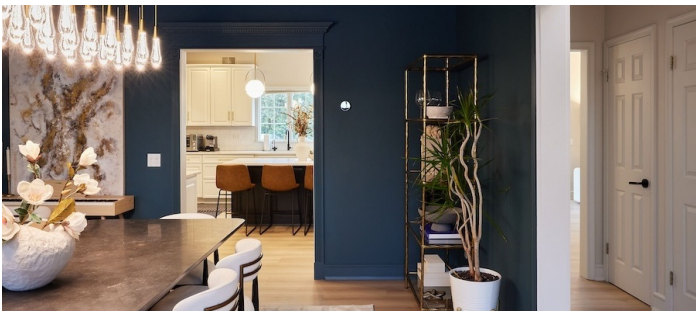
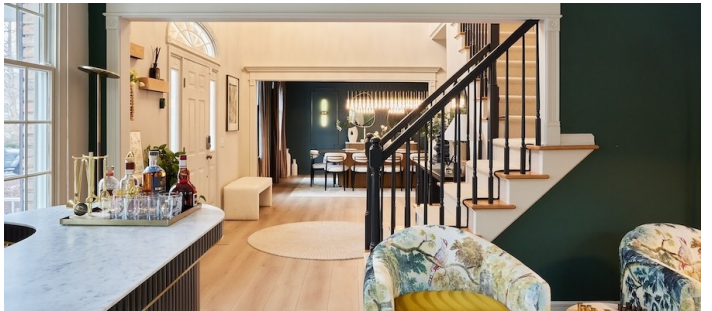
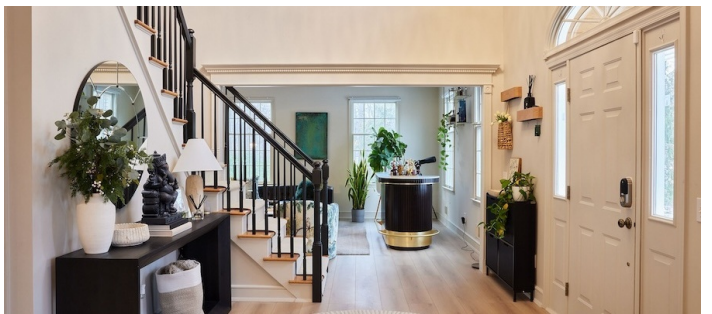


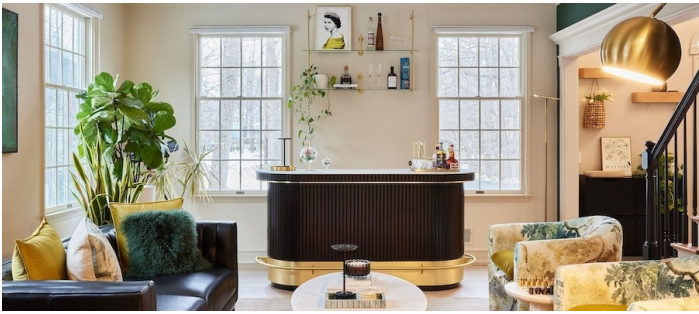
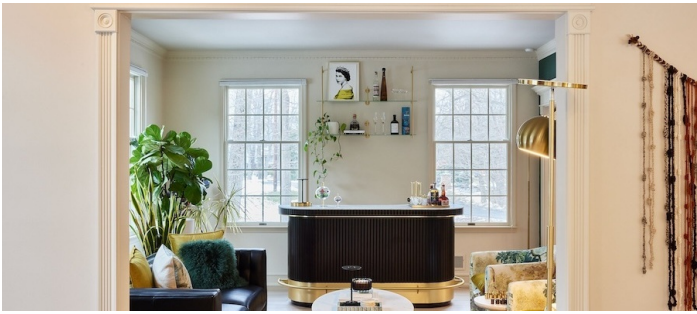


POOL

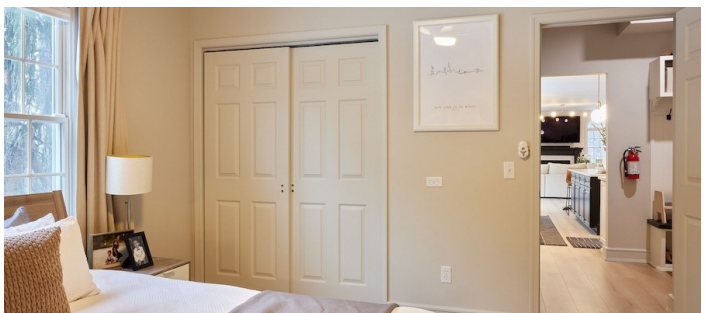
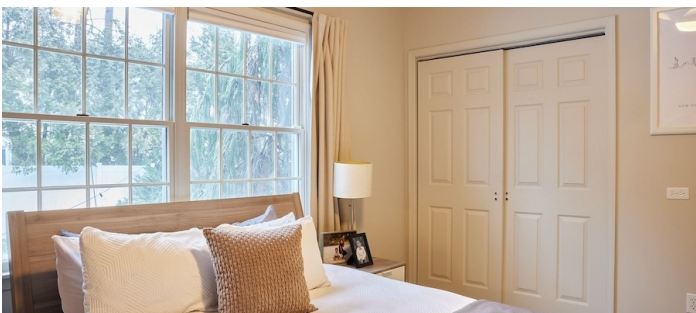
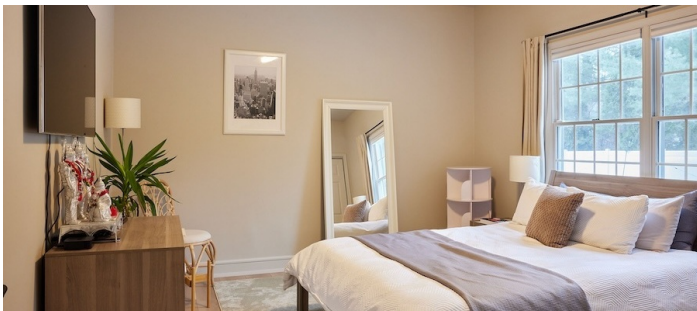
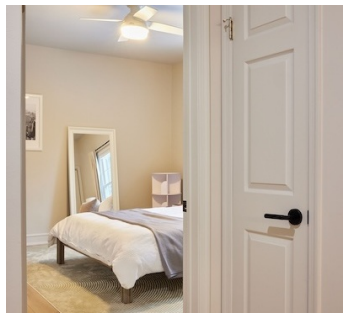
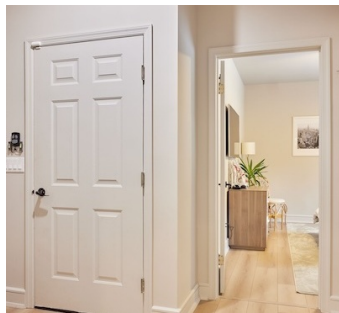
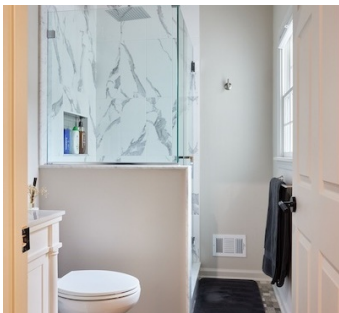
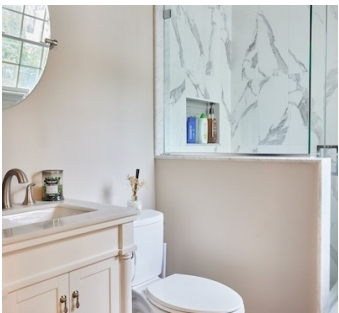
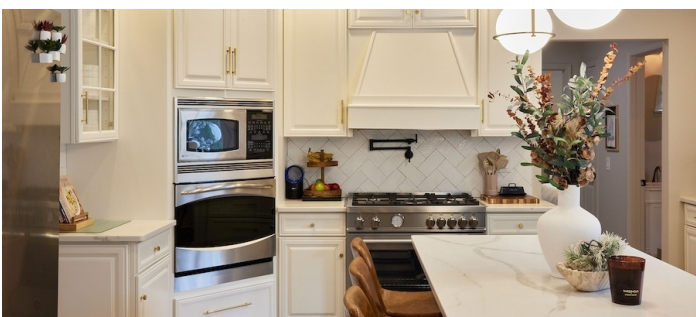


1ST FLOOR









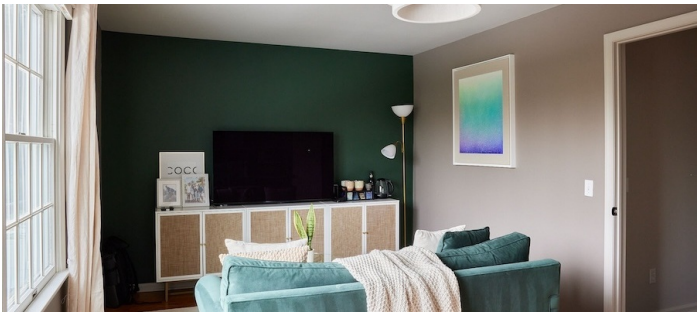


2ND FLOOR

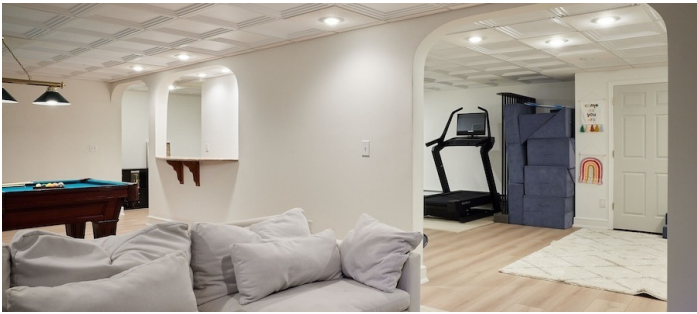
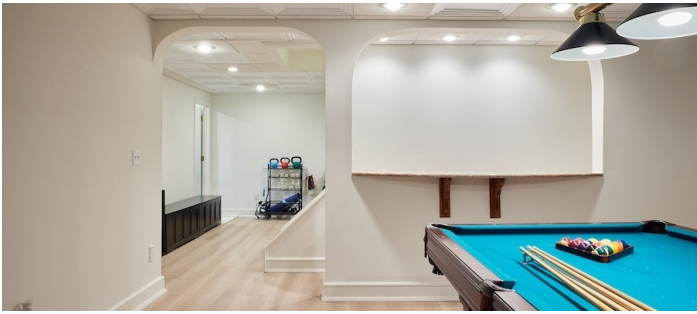
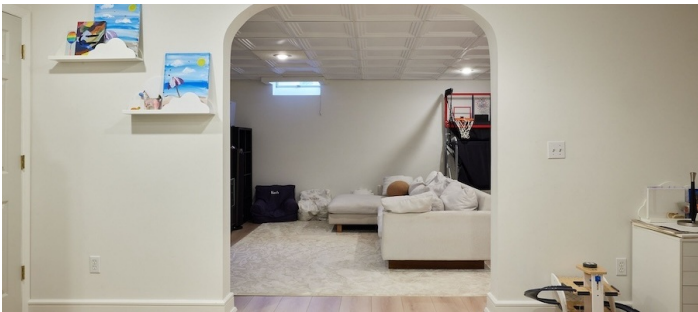


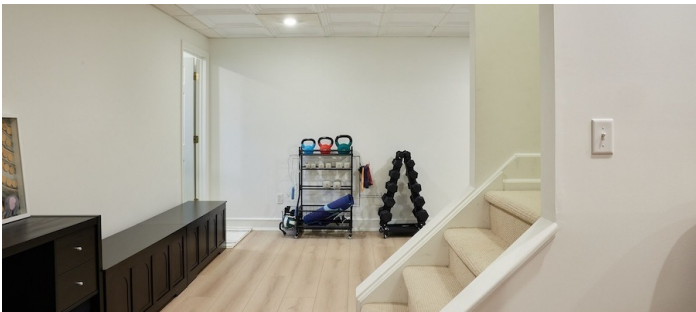






BASEMENT





GARAGE

