



PARLOR LEVEL - VIEW FULL DETAILS BELOW

 LOCATION

Brooklyn, NY 11217

 SPECS

1,000 sq ft per floor  
9'-12' ceiling height

 TAGS

Bathroom, Bedroom, Eclectic Quirky, Exposed Beam, Exposed Brick, Floor to Ceiling Windows, Kitchen, Living Room, Modern Contemporary, Parquet, Staircase Ext, Terrace Patio, White Spaces, Wood Floor

 CATEGORIES

\* In the Zone, Apartment, Brownstone

Notes

Meticulously designed, natural-light filled Park Slope brownstone with a spacious outdoor private yard, and a chef’s kitchen. Other features include: 12’ ceilings on parlor level, floor to ceiling windows, tons of natural light, white walls.

Perfect for photoshoots and film.

About the space: 1,000 sq ft interior space with 2000 sq ft additional, upon request (bedroom floor and cellar); 1,000 SF exterior space with terrace and garden. Ground floor access for garden bedroom level, stairs for upper floors.

Overnight storage available.

Restrictions:

Floor protection and shoe covers required.

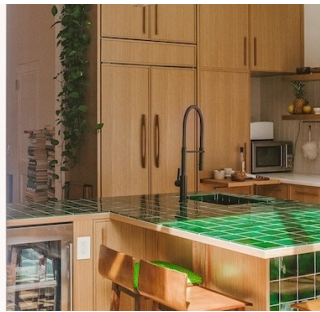
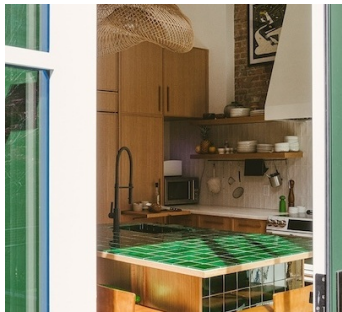
Fireplaces are not functional.

No painting or nailing into walls.

Prefer to rent parlor floor, with the bedroom and basement as add-ons.







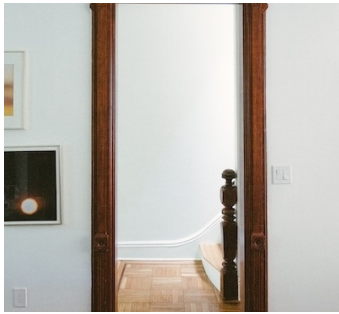
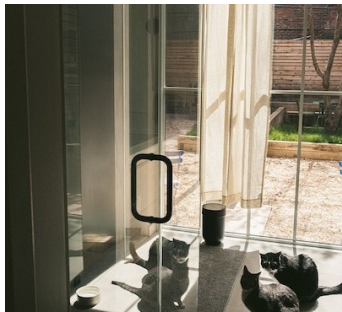


GARDEN LEVEL









CELLAR









