

Private:
1049

Noho, Manhattan

LOCATION

New York, NY 10013

SPECS

8,000 sq ft

TAGS

City View, Empty, Exposed Brick, Living Room, Modern Contemporary, Rooftop, Staircase, Terrace Patio, White Spaces

CATEGORIES

* In the Zone, Apartment, Duplex, Loft, Penthouse

Notes

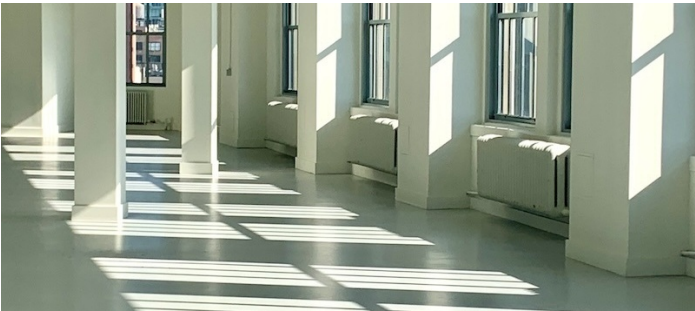
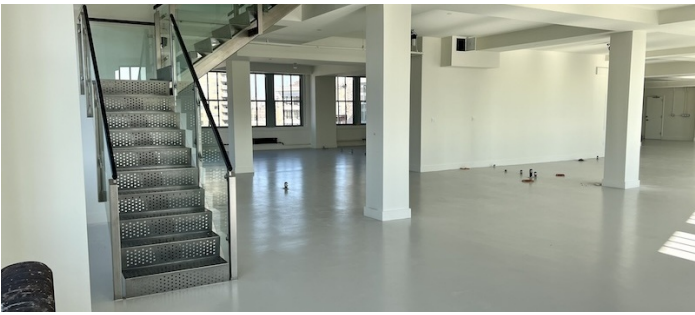
Empty duplex loft penthouse in prestigious pre-war building built in 1926. Views through the multi-paned windows and from the the terraces are stunning. The lower level, which is the building's 12th floor, is 6,500 square feet and the upper level is 1,500 square feet.

There are two terraces, East and West, which total 2,400 square feet.

Restrictions:

Additional building fees apply.

Prefer small shoots/no more than 20 people.



UPPER FLOOR



