


Private:
2135


NoMad, Manhattan

 LOCATION


New York, NY 10016

 TAGS


Bar, Bathroom, Bedroom, City View, Elevator, Fireplace, Garden, Kitchen, Living Room, Modern Contemporary, Pool Outdoor, Rooftop, Staircase, Terrace Patio, White Spaces, Wood Floor

 SPECS

2,100 sq ft - indoor
1,300 sq ft - rooftop
10' ceiling height

 POWER

200 amps

 CATEGORIES

* In the Zone, Apartment, Event Space, Penthouse

Notes

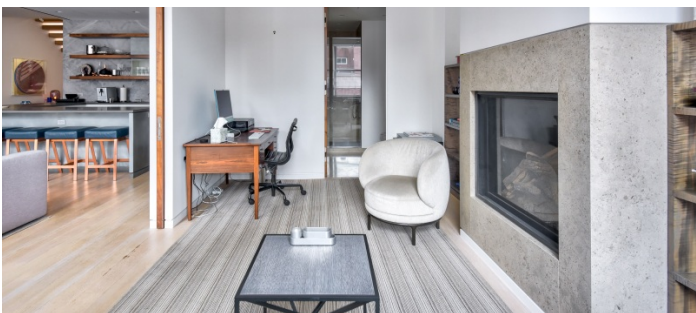
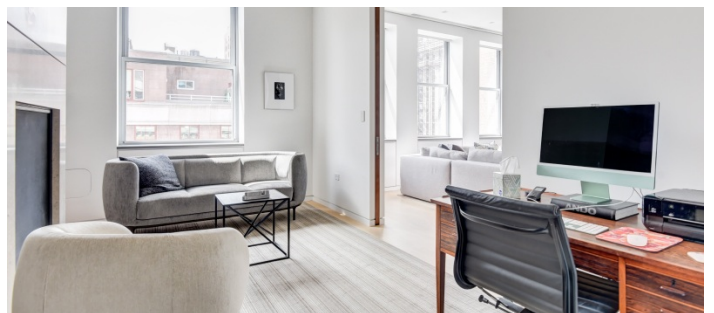
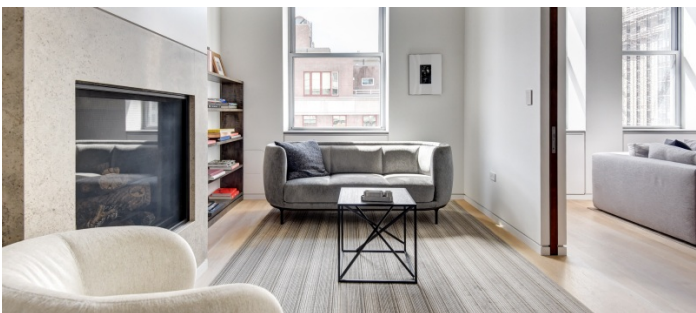
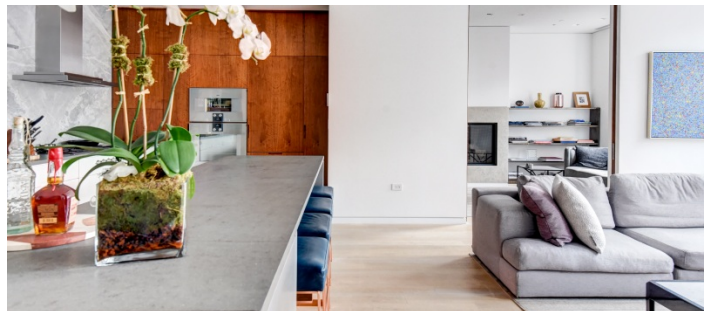
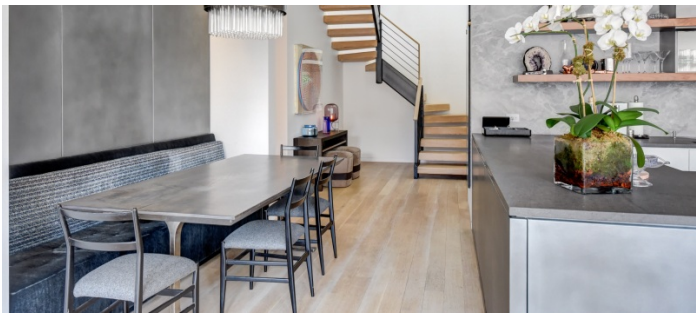
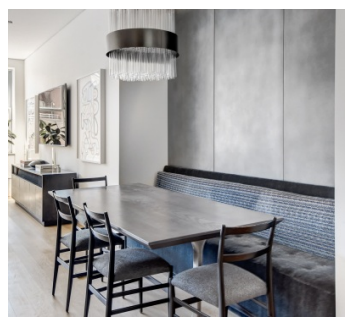
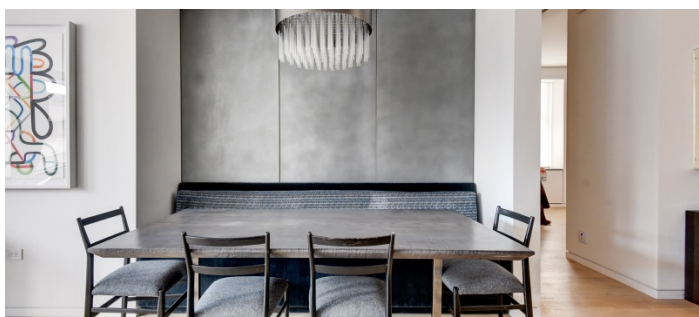
Modern luxury penthouse apartment with rooftop pool, fireplace, bar, BBQ with Gaggenau and Miele appliances.

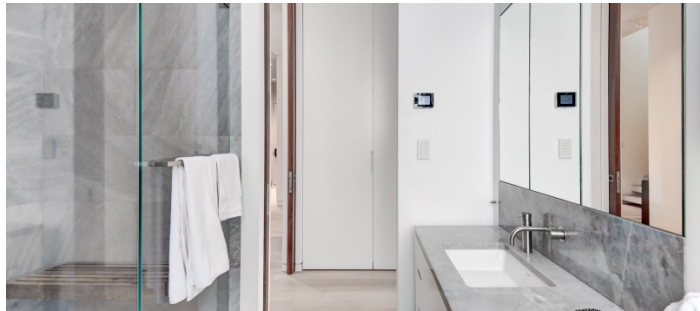
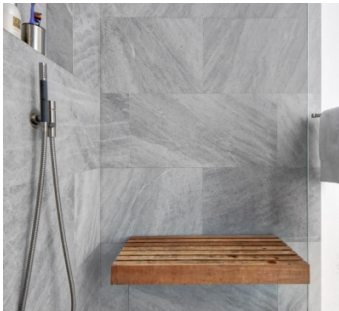
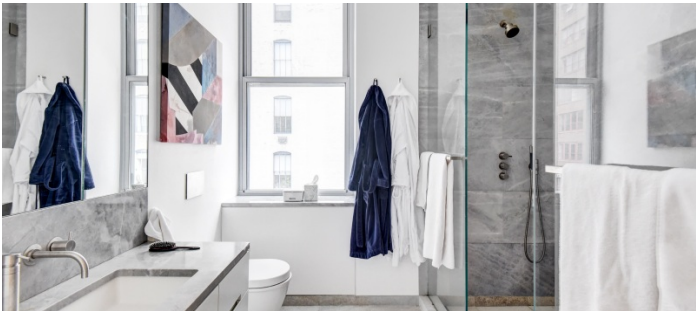
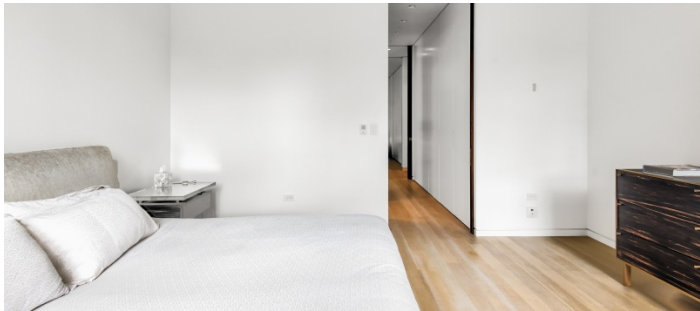
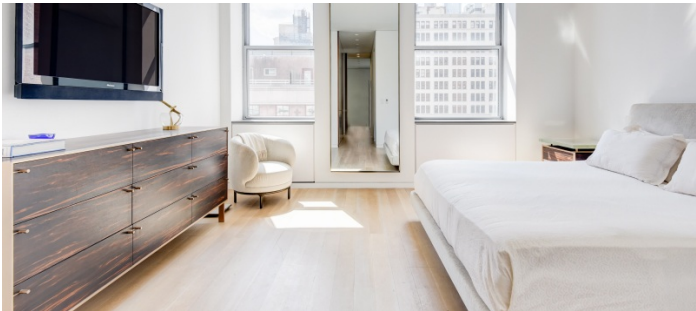
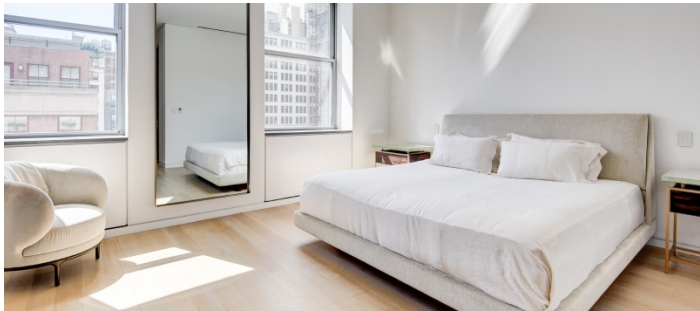
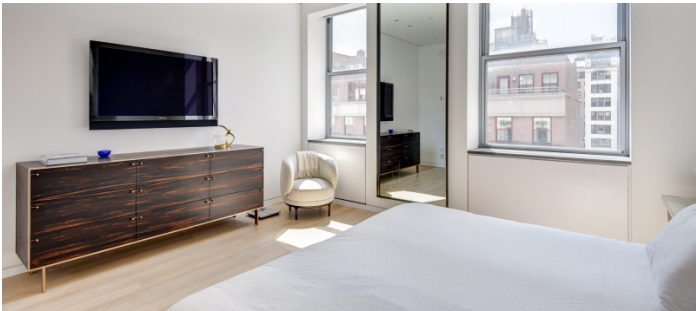
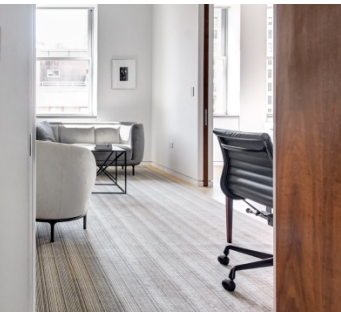
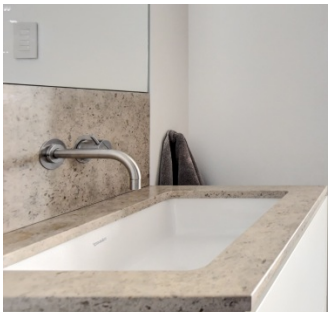
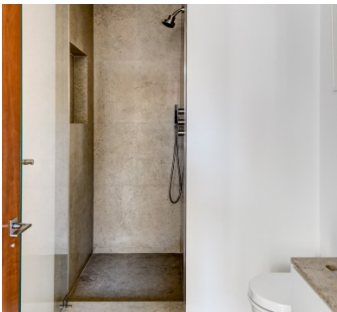
Restrictions:

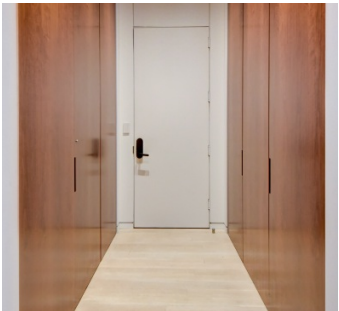
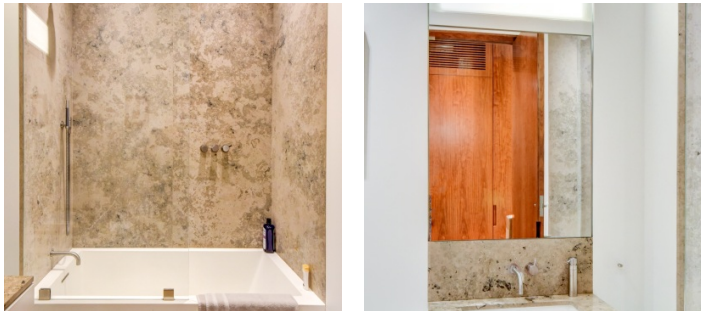
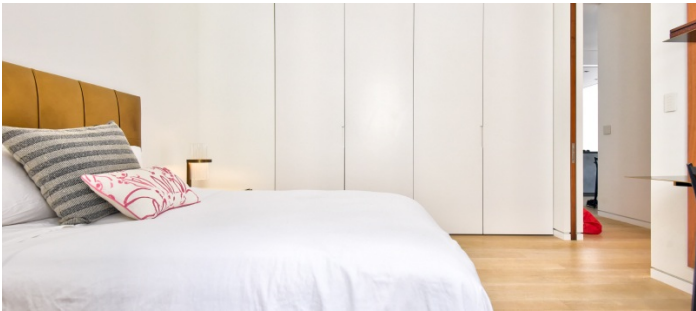
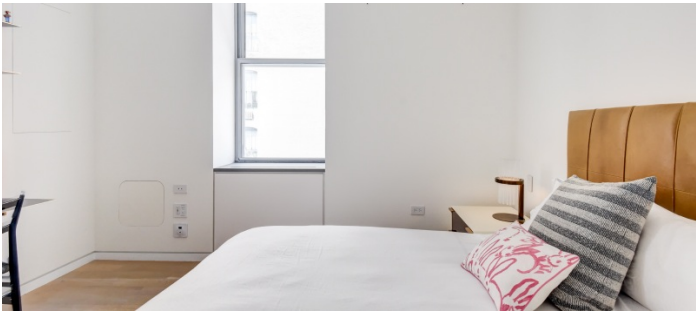
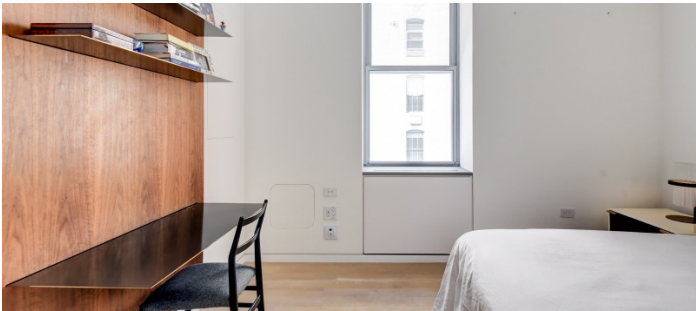
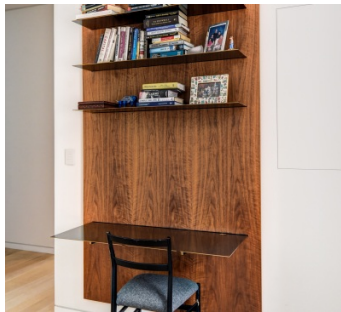
Possible to nail into or paint walls as long as have owner prior permission and return walls to original condition after project completion.

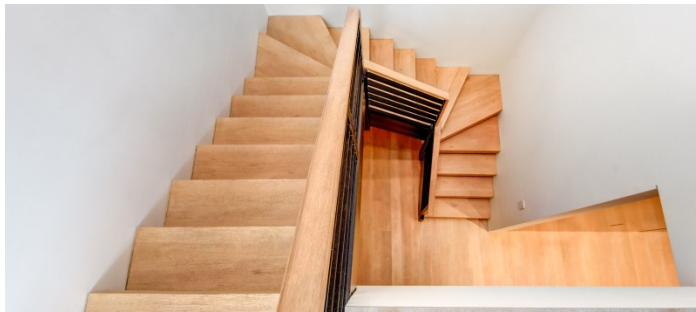
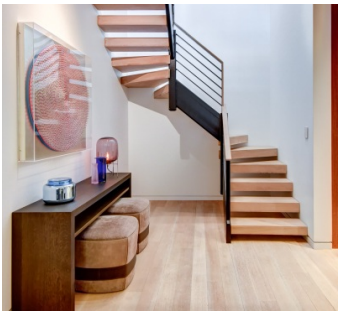


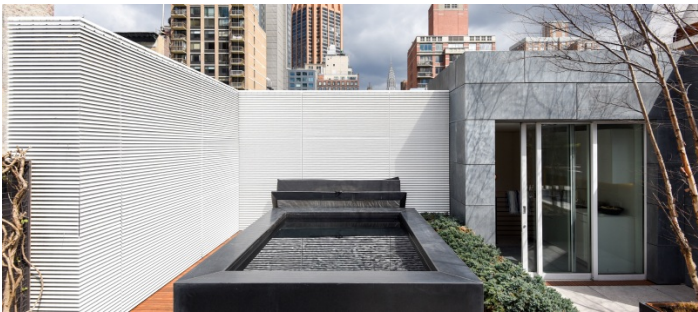


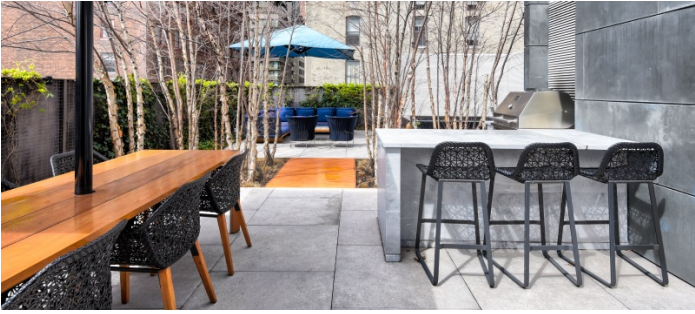




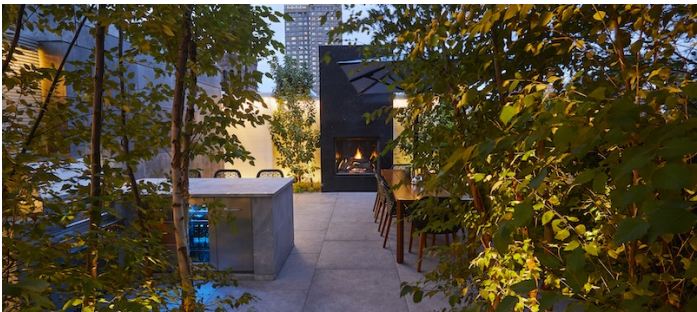








ROOFTOP TERRACE AT NIGHT



EXTERIOR (COMMERCIAL PARKING)

