


 LOCATION


New York, NY 10007

 SPECS

4,278 sq ft

 TAGS

Balcony, Bathroom, Bedroom, City View, Fireplace, Floor to Ceiling Windows, Kitchen, Living Room, Modern Contemporary, Rooftop, Terrace Patio, White Spaces, Wood Floor

 CATEGORIES

* In the Zone, Apartment

Notes

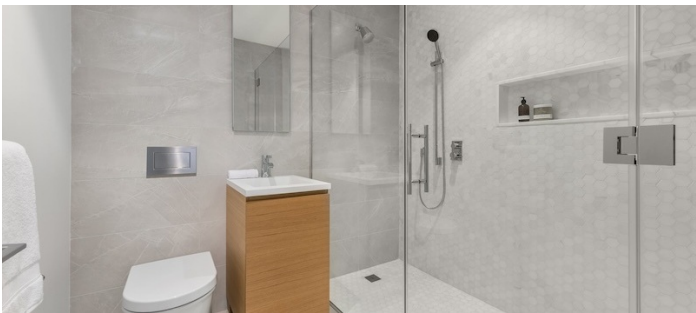
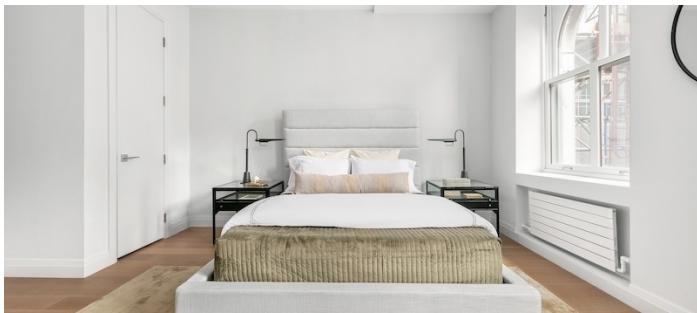
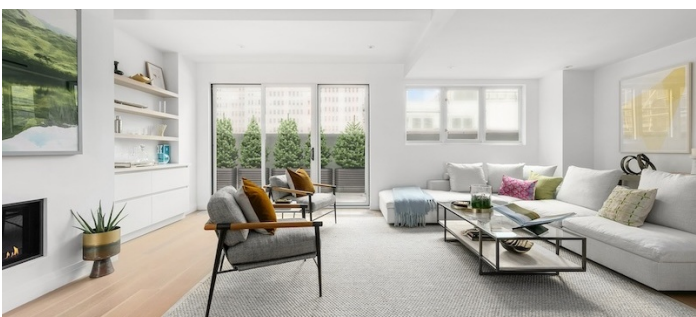
Contemporary four-bedroom residence in a landmarked building with cast-iron columns situated in the South Tribeca Historic District. This penthouse offers the ultimate in indoor and outdoor living with approximately 4,278 interior square feet and 1,266 square feet of private outdoor space with city views.

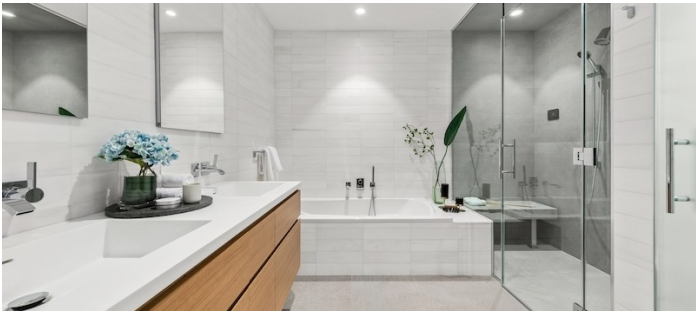
There is also a 1,300 square foot finished subcellar that has red brick arches and original details.

Professionally staged.

Restrictions:

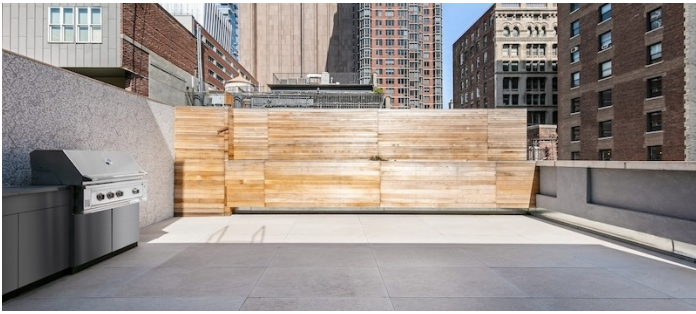
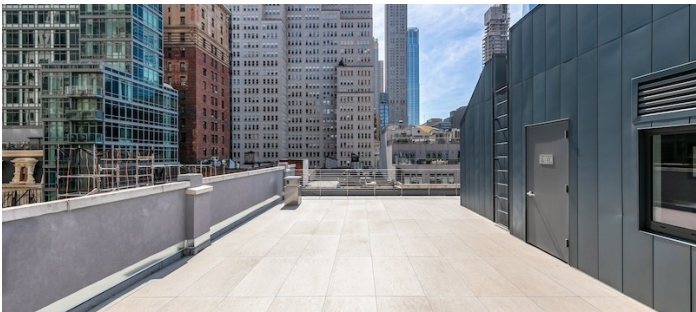
Requests to paint or nail into walls must be approved in advance; walls must be returned to original condition.







ROOF TERRACE (EMPTY)



FLOOR PLAN

